

Product datasheet for **TA367658S**

GAP43 Rabbit Polyclonal Antibody

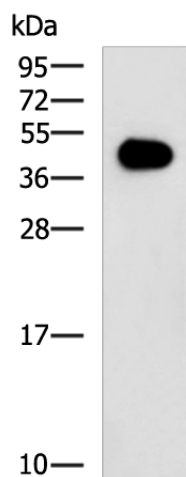
Product data:

Product Type:	Primary Antibodies
Applications:	IHC, WB
Recommended Dilution:	WB: 500-2000 WB positive control: Human cerebrum tissue, Mouse heart tissue lysates IHC: 50-100 Positive control: Human thyroid cancer Predicted cell location: Cytoplasm
Reactivity:	Human, Mouse, Rat
Host:	Rabbit
Isotype:	IgG
Clonality:	Polyclonal
Immunogen:	Synthetic peptide of human GAP43
Formulation:	pH7.4 PBS, 0.05% NaN ₃ , 40% Glycerol
Purification:	Antigen affinity purification
Conjugation:	Unconjugated
Storage:	Store at -20°C.
Stability:	1 year
Predicted Protein Size:	25 kDa
Gene Name:	growth associated protein 43
Database Link:	Entrez Gene 2596 Human P17677
Background:	The protein encoded by this gene has been termed a 'growth' or 'plasticity' protein because it is expressed at high levels in neuronal growth cones during development and axonal regeneration. This protein is considered a crucial component of an effective regenerative response in the nervous system. Alternatively spliced transcript variants encoding distinct isoforms have been found for this gene.
Synonyms:	B-50; neuromodulin; PP46

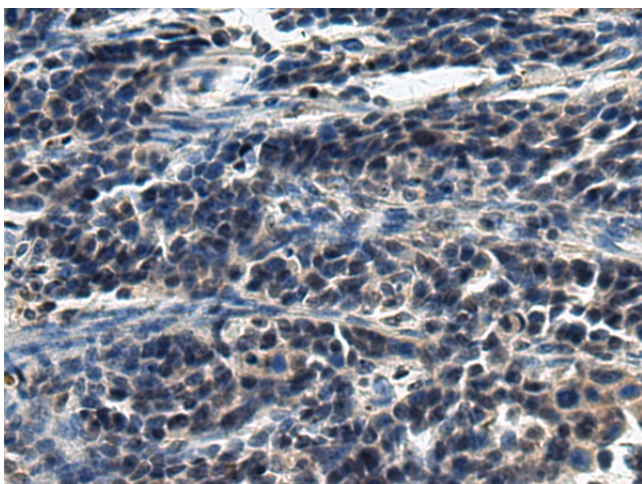


[View online »](#)

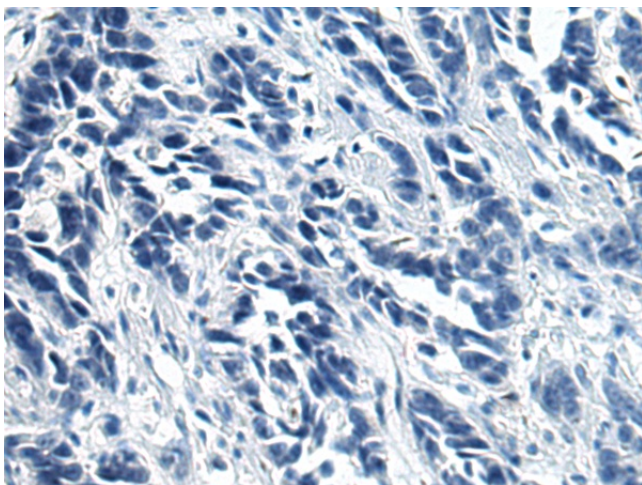
Product images:



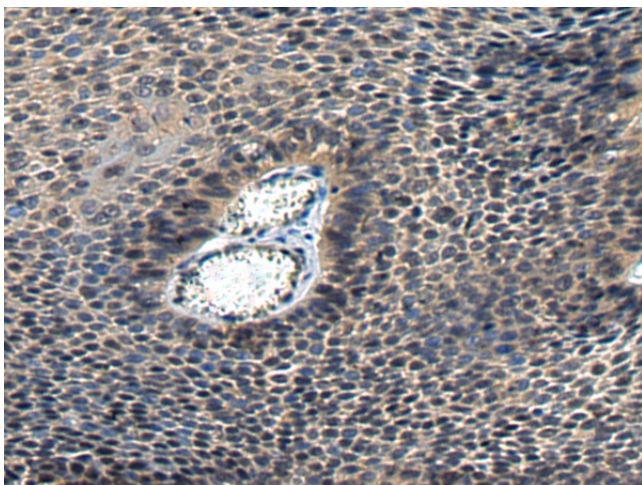
Gel: 12%SDS-PAGE
Lysate: 40 μ g
Lane 1-2: Human cerebrum tissue
Mouse heart tissue lysates
Primary antibody: [TA367658] (GAP43 Antibody)
at dilution 1/700
Secondary antibody: Goat anti rabbit IgG at
1/5000 dilution
Exposure time: 3 minutes



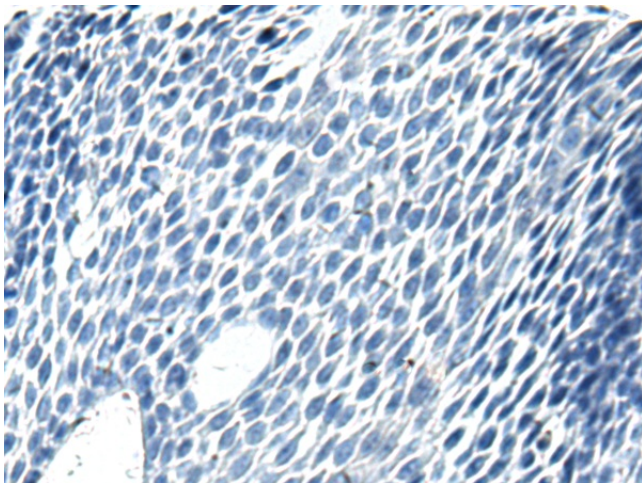
Immunohistochemistry of paraffin-embedded
Human thyroid cancer tissue using [TA367658]
(GAP43 Antibody) at dilution 1/30 (Original
magnification: \times 200)



Immunohistochemistry of paraffin-embedded Human thyroid cancer tissue using [TA367658] (GAP43 Antibody) at dilution 1/30, treated with synthetic peptide. (Original magnification: ×200)



Immunohistochemistry of paraffin-embedded Human lung cancer tissue using [TA367658] (GAP43 Antibody) at dilution 1/30 (Original magnification: ×200)



Immunohistochemistry of paraffin-embedded Human lung cancer tissue using [TA367658] (GAP43 Antibody) at dilution 1/30, treated with synthetic peptide. (Original magnification: ×200)