

## Product datasheet for **TA367658**

### GAP43 Rabbit Polyclonal Antibody

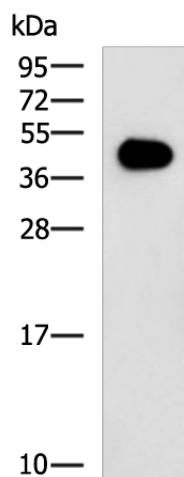
#### Product data:

Product Type:	Primary Antibodies
Applications:	IHC, WB
Recommended Dilution:	WB: 500-2000 WB positive control: Human cerebrum tissue, Mouse heart tissue lysates IHC: 50-100 Positive control: Human thyroid cancer Predicted cell location: Cytoplasm
Reactivity:	Human, Mouse, Rat
Host:	Rabbit
Isotype:	IgG
Clonality:	Polyclonal
Immunogen:	Synthetic peptide of human GAP43
Formulation:	pH7.4 PBS, 0.05% NaN <sub>3</sub> , 40% Glycerol
Concentration:	lot specific
Purification:	Antigen affinity purification
Conjugation:	Unconjugated
Storage:	Store at -20°C.
Stability:	1 year
Predicted Protein Size:	25 kDa
Gene Name:	growth associated protein 43
Database Link:	<a href="#">Entrez Gene 2596 Human P17677</a>
Background:	The protein encoded by this gene has been termed a 'growth' or 'plasticity' protein because it is expressed at high levels in neuronal growth cones during development and axonal regeneration. This protein is considered a crucial component of an effective regenerative response in the nervous system. Alternatively spliced transcript variants encoding distinct isoforms have been found for this gene.
Synonyms:	B-50; neuromodulin; PP46

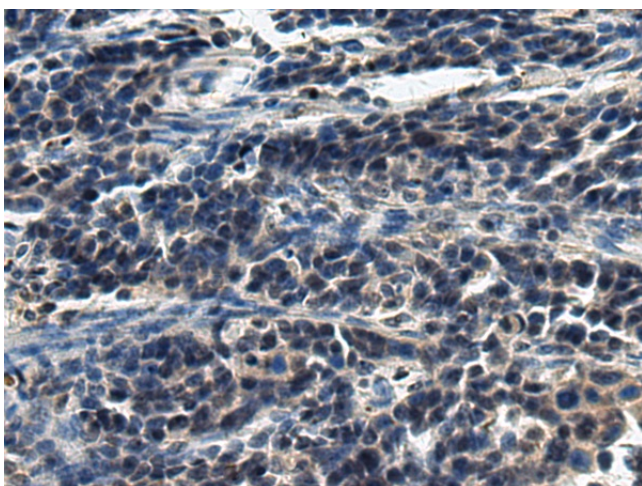


[View online »](#)

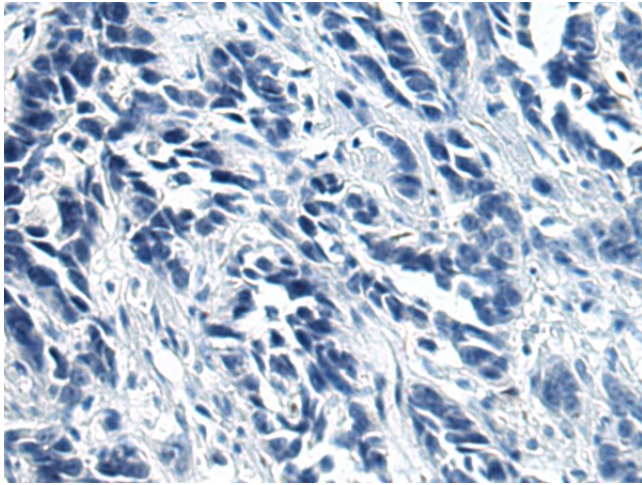
## Product images:



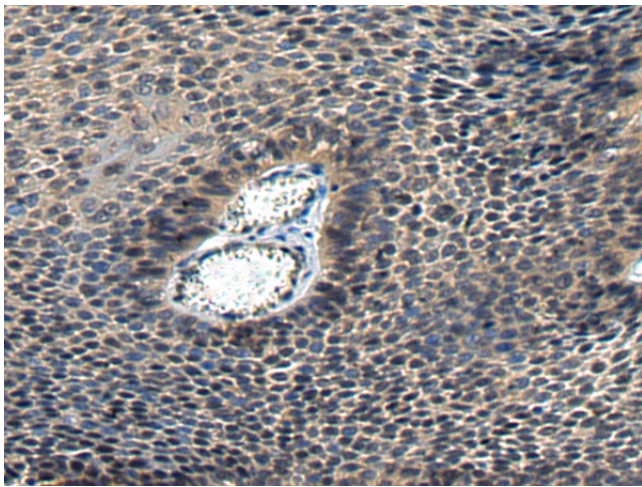
Gel: 12%SDS-PAGE  
Lysate: 40  $\mu$ g  
Lane 1-2: Human cerebrum tissue  
Mouse heart tissue lysates  
Primary antibody: TA367658 (GAP43 Antibody) at dilution 1/700  
Secondary antibody: Goat anti rabbit IgG at 1/5000 dilution  
Exposure time: 3 minutes



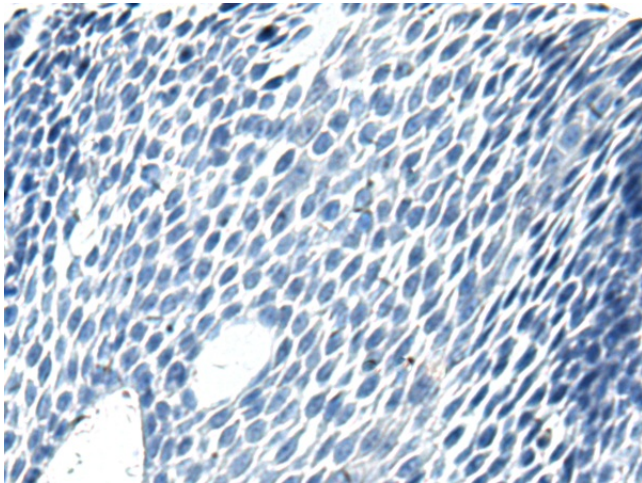
Immunohistochemistry of paraffin-embedded Human thyroid cancer tissue using TA367658 (GAP43 Antibody) at dilution 1/30 (Original magnification:  $\times$ 200)



Immunohistochemistry of paraffin-embedded Human thyroid cancer tissue using TA367658 (GAP43 Antibody) at dilution 1/30, treated with synthetic peptide. (Original magnification: ×200)



Immunohistochemistry of paraffin-embedded Human lung cancer tissue using TA367658 (GAP43 Antibody) at dilution 1/30 (Original magnification: ×200)



Immunohistochemistry of paraffin-embedded Human lung cancer tissue using TA367658 (GAP43 Antibody) at dilution 1/30, treated with synthetic peptide. (Original magnification: ×200)