

## Product datasheet for **TA367653S**

### DUSP3 Rabbit Polyclonal Antibody

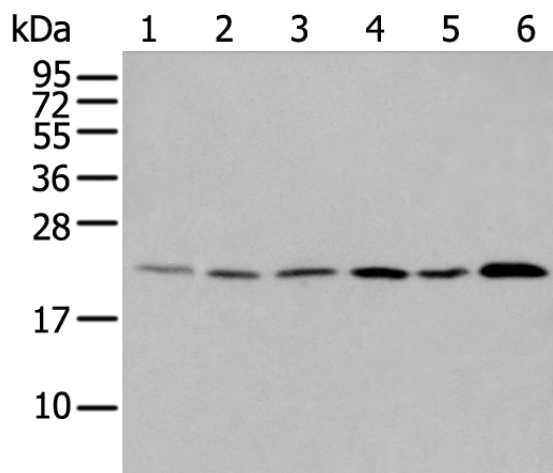
#### Product data:

|                         |   |
|-------------------------|---|
| Product Type:           | Primary Antibodies  |
| Applications:           | IHC, WB   |
| Recommended Dilution:   | WB: 200-1000<br>WB positive control: Jurkat□Hela□K562□293T and HepG2 cell□Human fetal liver tissue<br>IHC: 25-100<br>Positive control: Human lung cancer<br>Predicted cell location: Nucleus  |
| Reactivity:             | Human, Mouse  |
| Host:                   | Rabbit  |
| Isotype:                | IgG   |
| Clonality:              | Polyclonal  |
| Immunogen:              | Synthetic peptide of human DUSP3  |
| Formulation:            | pH7.4 PBS, 0.05% NaN <sub>3</sub> , 40% Glycerol  |
| Purification:           | Antigen affinity purification   |
| Conjugation:            | Unconjugated  |
| Storage:                | Store at -20°C.   |
| Stability:              | 1 year  |
| Predicted Protein Size: | 20 kDa  |
| Gene Name:              | dual specificity phosphatase 3  |
| Database Link:          | <a href="#">Entrez Gene 1845 Human P51452</a>   |
| Background:             | The protein encoded by this gene is a member of the dual specificity protein phosphatase subfamily. This gene maps in a region that contains the BRCA1 locus which confers susceptibility to breast and ovarian cancer. Although DUSP3 is expressed in both breast and ovarian tissues, mutation screening in breast cancer pedigrees and in sporadic tumors was negative, leading to the conclusion that this gene is not BRCA1. |
| Synonyms:               | VHR   |

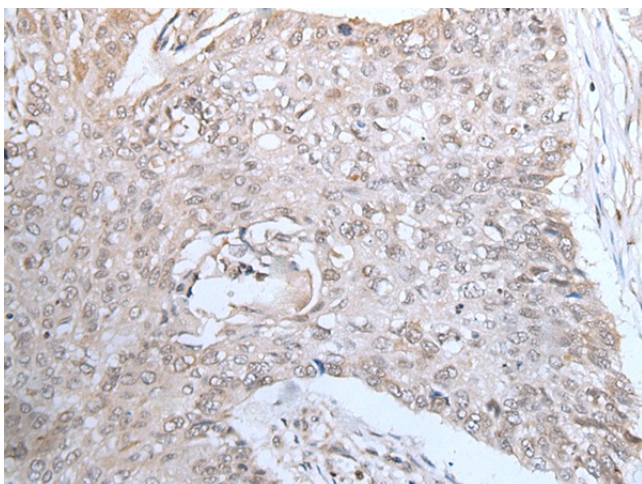


[View online »](#)

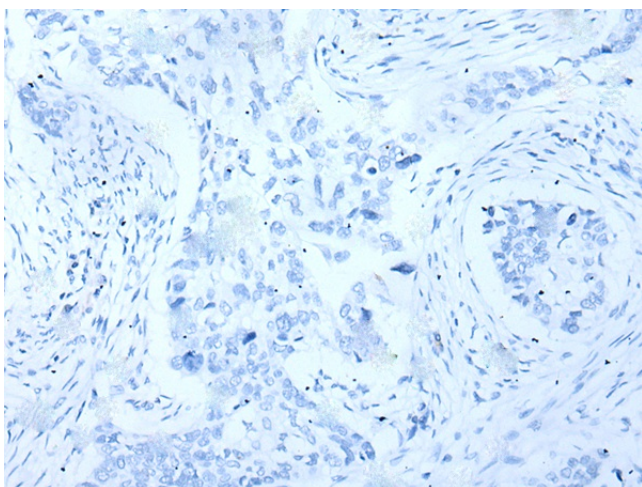
## Product images:



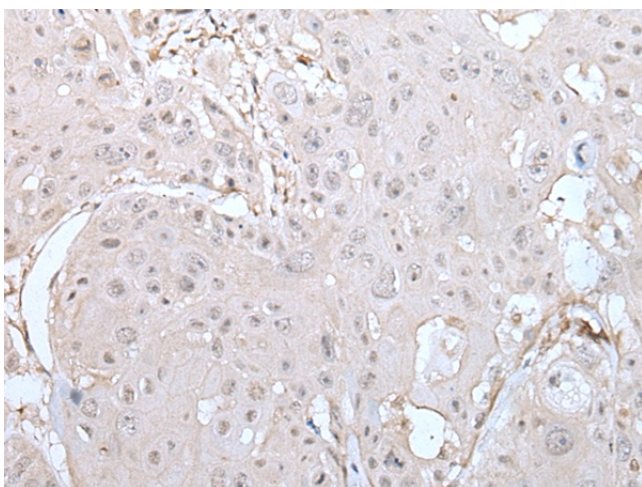
Gel: 12%SDS-PAGE  
Lysate: 40  $\mu$ g  
Lane 1-6: Jurkat  
Hela  
K562  
293T and HepG2 cell  
Human fetal liver tissue lysates  
Primary antibody: [TA367653] (DUSP3 Antibody)  
at dilution 1/250  
Secondary antibody: Goat anti rabbit IgG at  
1/8000 dilution  
Exposure time: 30 seconds



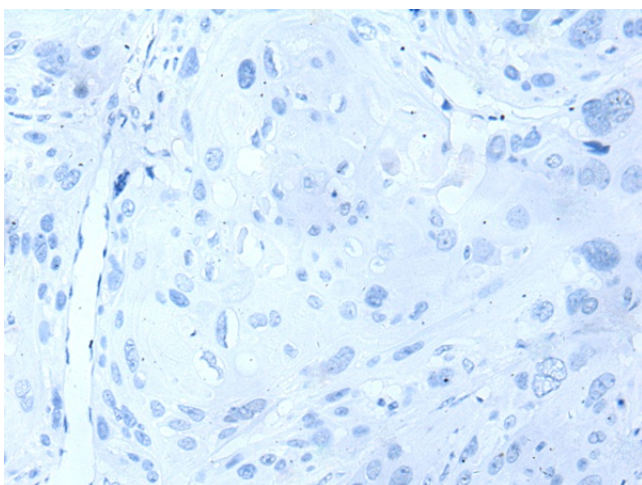
Immunohistochemistry of paraffin-embedded  
Human lung cancer tissue using [TA367653]  
(DUSP3 Antibody) at dilution 1/25 (Original  
magnification:  $\times$ 200)



Immunohistochemistry of paraffin-embedded Human lung cancer tissue using [TA367653] (DUSP3 Antibody) at dilution 1/25, treated with synthetic peptide. (Original magnification: x200)



Immunohistochemistry of paraffin-embedded Human esophagus cancer tissue using [TA367653] (DUSP3 Antibody) at dilution 1/25 (Original magnification: x200)



Immunohistochemistry of paraffin-embedded Human esophagus cancer tissue using [TA367653] (DUSP3 Antibody) at dilution 1/25, treated with synthetic peptide. (Original magnification: x200)