

## Product datasheet for **TA367645S**

### CNPase (CNP) Rabbit Polyclonal Antibody

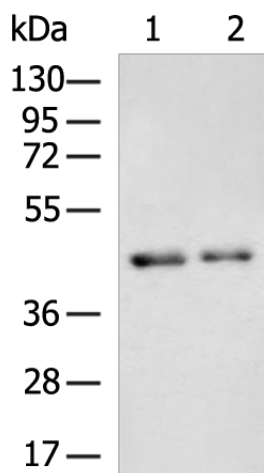
#### Product data:

Product Type:	Primary Antibodies
Applications:	IHC, WB
Recommended Dilution:	WB: 500-2000 WB positive control: Human cerebrum tissue, Human cerebella tissue lysates IHC: 25-50 Positive control: Human esophagus cancer Predicted cell location: Cytoplasm
Reactivity:	Human, Rat
Host:	Rabbit
Isotype:	IgG
Clonality:	Polyclonal
Immunogen:	Synthetic peptide of human CNP
Formulation:	pH7.4 PBS, 0.05% NaN <sub>3</sub> , 40% Glycerol
Purification:	Antigen affinity purification
Conjugation:	Unconjugated
Storage:	Store at -20°C.
Stability:	1 year
Predicted Protein Size:	47 kDa
Gene Name:	2',3'-cyclic nucleotide 3' phosphodiesterase
Database Link:	<a href="#">Entrez Gene 1267 Human P09543</a>
Background:	May participate in RNA metabolism in the myelinating cell, CNP is the third most abundant protein in central nervous system myelin.
Synonyms:	CNP1; CNPase

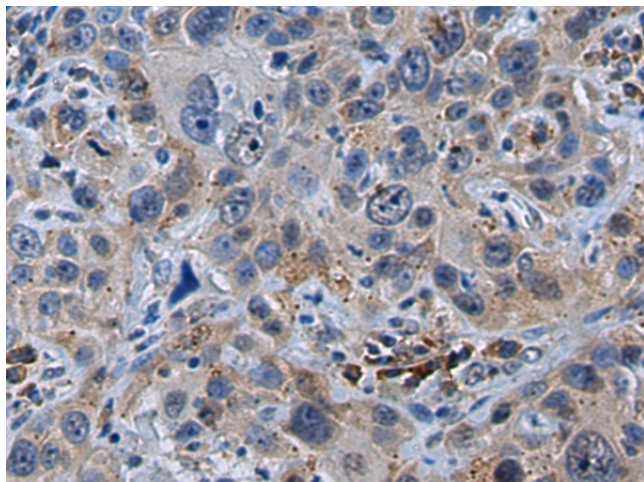


[View online »](#)

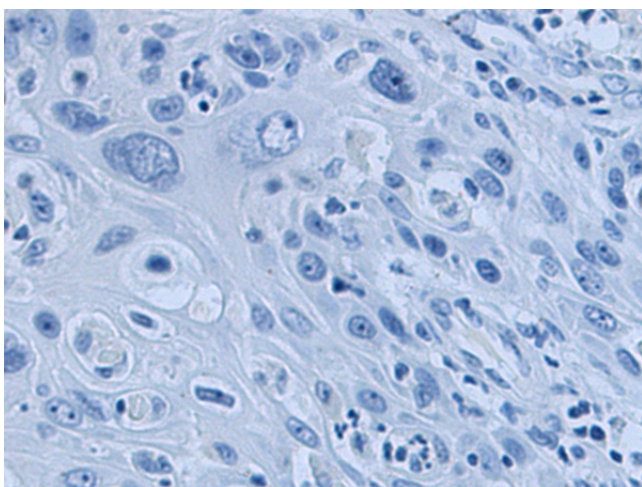
## Product images:



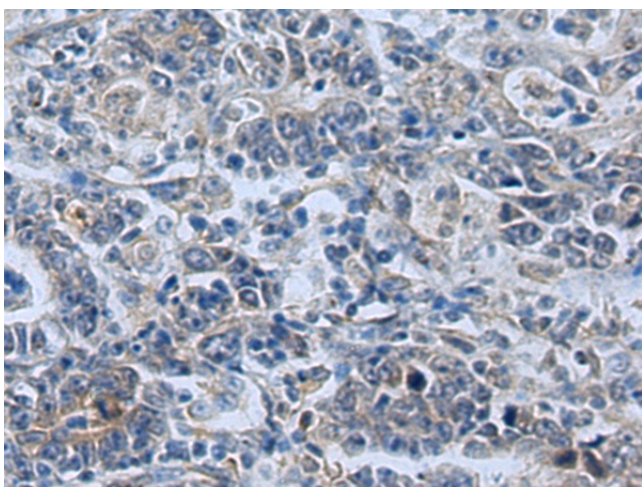
Gel: 8%SDS-PAGE  
Lysate: 40 µg  
Lane 1-2: Human cerebrum tissue  
Human cerebella tissue lysates  
Primary antibody: [TA367645] (CNP Antibody) at dilution 1/800  
Secondary antibody: Goat anti rabbit IgG at 1/5000 dilution  
Exposure time: 2 minutes



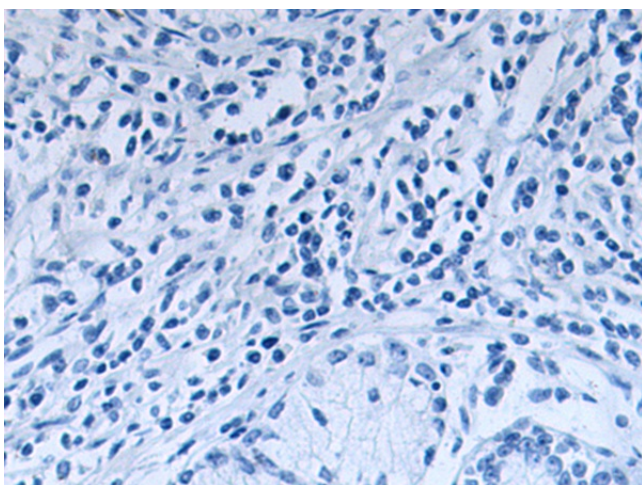
Immunohistochemistry of paraffin-embedded Human esophagus cancer tissue using [TA367645] (CNP Antibody) at dilution 1/35 (Original magnification: ×200)



Immunohistochemistry of paraffin-embedded Human esophagus cancer tissue using [TA367645] (CNP Antibody) at dilution 1/35, treated with synthetic peptide. (Original magnification: ×200)



Immunohistochemistry of paraffin-embedded Human gastric cancer tissue using [TA367645] (CNP Antibody) at dilution 1/35 (Original magnification: ×200)



Immunohistochemistry of paraffin-embedded Human gastric cancer tissue using [TA367645] (CNP Antibody) at dilution 1/35, treated with synthetic peptide. (Original magnification: ×200)