

Product datasheet for **TA367645**

CNPase (CNP) Rabbit Polyclonal Antibody

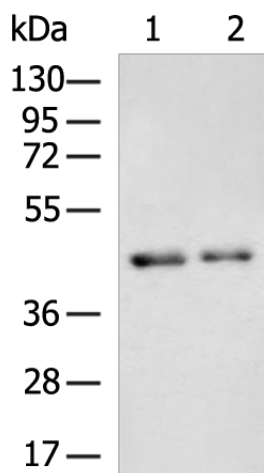
Product data:

| | |
|-------------------------|--|
| Product Type: | Primary Antibodies |
| Applications: | IHC, WB |
| Recommended Dilution: | WB: 500-2000 WB positive control: Human cerebrum tissue, Human cerebella tissue lysates IHC: 25-50 Positive control: Human esophagus cancer Predicted cell location: Cytoplasm |
| Reactivity: | Human, Rat |
| Host: | Rabbit |
| Isotype: | IgG |
| Clonality: | Polyclonal |
| Immunogen: | Synthetic peptide of human CNP |
| Formulation: | pH7.4 PBS, 0.05% NaN ₃ , 40% Glycerol |
| Concentration: | lot specific |
| Purification: | Antigen affinity purification |
| Conjugation: | Unconjugated |
| Storage: | Store at -20°C. |
| Stability: | 1 year |
| Predicted Protein Size: | 47 kDa |
| Gene Name: | 2',3'-cyclic nucleotide 3' phosphodiesterase |
| Database Link: | Entrez Gene 1267 Human P09543 |
| Background: | May participate in RNA metabolism in the myelinating cell, CNP is the third most abundant protein in central nervous system myelin. |
| Synonyms: | CNP1; CNPase |

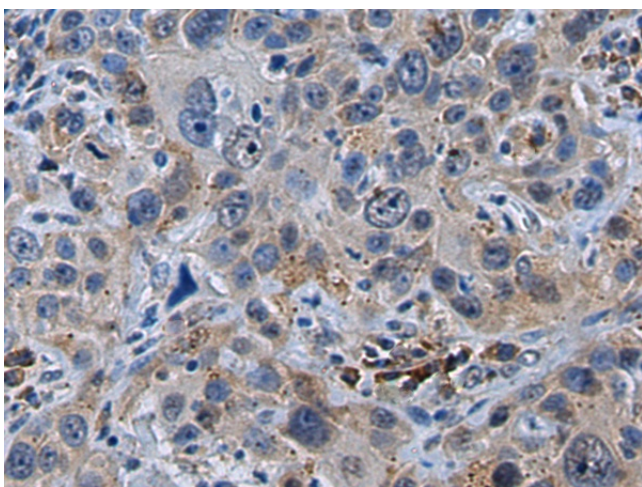


[View online »](#)

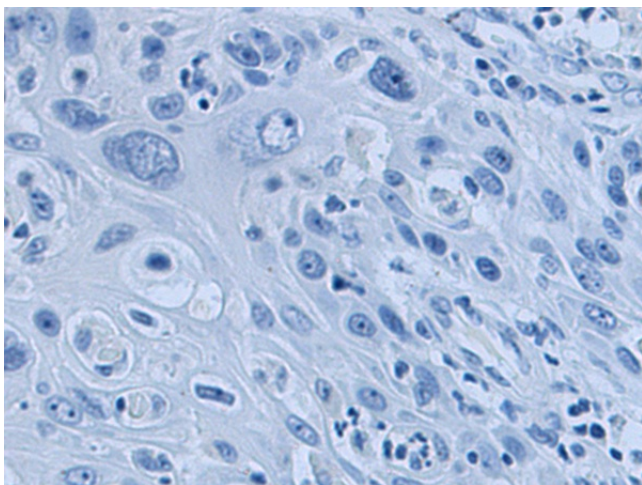
Product images:



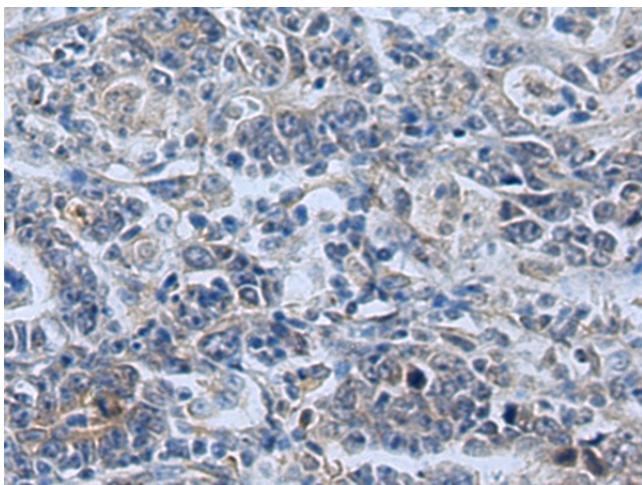
Gel: 8%SDS-PAGE
Lysate: 40 μ g
Lane 1-2: Human cerebrum tissue
Human cerebella tissue lysates
Primary antibody: TA367645 (CNP Antibody) at dilution 1/800
Secondary antibody: Goat anti rabbit IgG at 1/5000 dilution
Exposure time: 2 minutes



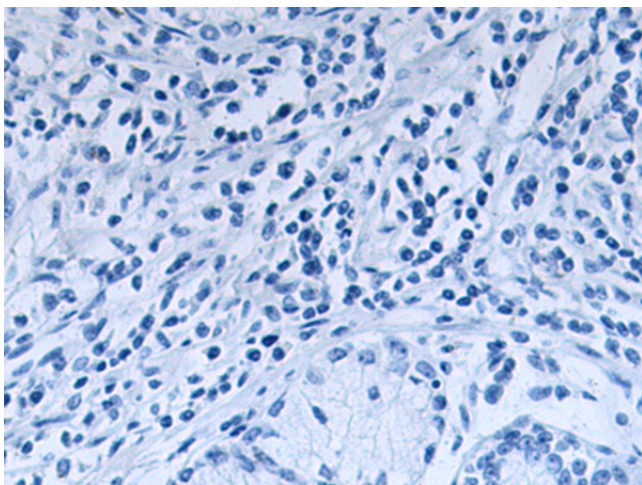
Immunohistochemistry of paraffin-embedded Human esophagus cancer tissue using TA367645 (CNP Antibody) at dilution 1/35 (Original magnification: \times 200)



Immunohistochemistry of paraffin-embedded Human esophagus cancer tissue using TA367645 (CNP Antibody) at dilution 1/35, treated with synthetic peptide. (Original magnification: ×200)



Immunohistochemistry of paraffin-embedded Human gastric cancer tissue using TA367645 (CNP Antibody) at dilution 1/35 (Original magnification: ×200)



Immunohistochemistry of paraffin-embedded Human gastric cancer tissue using TA367645 (CNP Antibody) at dilution 1/35, treated with synthetic peptide. (Original magnification: ×200)