

Product datasheet for **TA367644**

Calnexin (CANX) Rabbit Polyclonal Antibody

Product data:

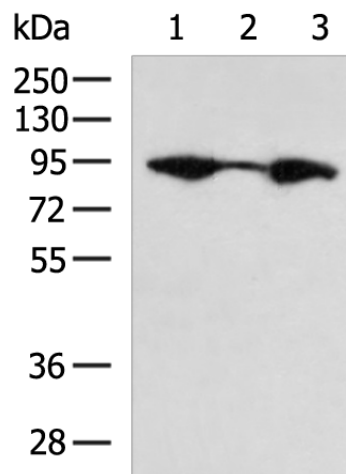
Product Type:	Primary Antibodies
Applications:	IHC, WB
Recommended Dilution:	WB: 1000-5000 WB positive control: LNCAP cell, Mouse heart tissue, HUVEC cell lysates IHC: 50-200 Positive control: Human cervical cancer Predicted cell location: Cytoplasm
Reactivity:	Human, Mouse, Rat
Host:	Rabbit
Isotype:	IgG
Clonality:	Polyclonal
Immunogen:	Synthetic peptide of human CANX
Formulation:	pH7.4 PBS, 0.05% NaN ₃ , 40% Glycerol
Concentration:	lot specific
Purification:	Antigen affinity purification
Conjugation:	Unconjugated
Storage:	Store at -20°C.
Stability:	1 year
Predicted Protein Size:	67 kDa
Gene Name:	calnexin
Database Link:	Entrez Gene 821 Human P27824
Background:	This gene encodes a member of the calnexin family of molecular chaperones. The encoded protein is a calcium-binding, endoplasmic reticulum (ER)-associated protein that interacts transiently with newly synthesized N-linked glycoproteins, facilitating protein folding and assembly. It may also play a central role in the quality control of protein folding by retaining incorrectly folded protein subunits within the ER for degradation. Alternatively spliced transcript variants encoding different isoforms have been described.



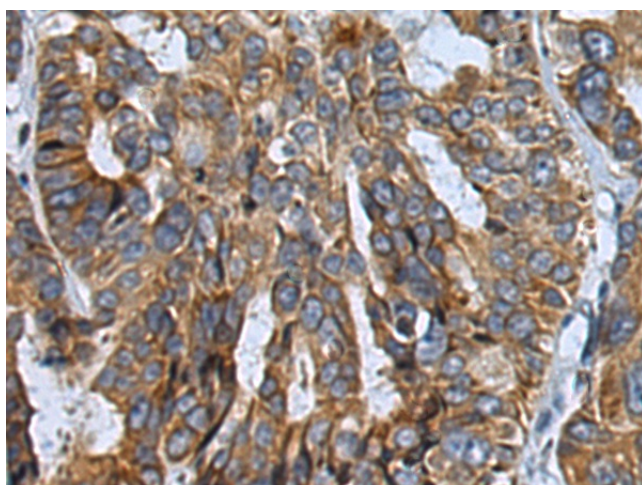
[View online »](#)

Synonyms: calnexin; CNX; FLJ26570; IP90; p90

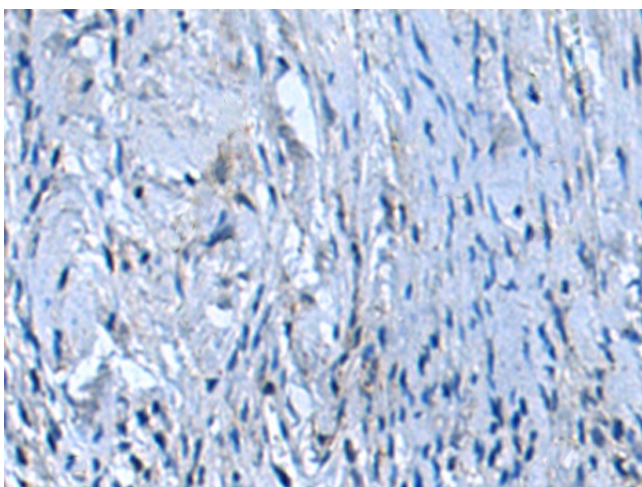
Product images:



Gel: 8%SDS-PAGE
 Lysate: 40 µg
 Lane 1-3: LNCAP cell
 Mouse heart tissue
 HUVEC cell lysates
 Primary antibody: TA367644 (CANX Antibody) at dilution 1/1000
 Secondary antibody: Goat anti rabbit IgG at 1/5000 dilution
 Exposure time: 30 seconds



Immunohistochemistry of paraffin-embedded Human cervical cancer tissue using TA367644 (CANX Antibody) at dilution 1/40 (Original magnification: ×200)



Immunohistochemistry of paraffin-embedded Human cervical cancer tissue using TA367644 (CANX Antibody) at dilution 1/40, treated with synthetic peptide. (Original magnification: $\times 200$)