

Product datasheet for **TA367642**

Menin (MEN1) Rabbit Polyclonal Antibody

Product data:

Product Type:	Primary Antibodies
Applications:	IHC, WB
Recommended Dilution:	WB: 200-1000 WB positive control: K562□Hela□A431 and NIH/3T3 cell IHC: 20-100 Positive control: Human tonsil Predicted cell location: Cytoplasm
Reactivity:	Human, Mouse, Rat
Host:	Rabbit
Isotype:	IgG
Clonality:	Polyclonal
Immunogen:	Synthetic peptide of human MEN1
Formulation:	pH7.4 PBS, 0.05% NaN ₃ , 40% Glycerol
Concentration:	lot specific
Purification:	Antigen affinity purification
Conjugation:	Unconjugated
Storage:	Store at -20°C.
Stability:	1 year
Predicted Protein Size:	68 kDa
Gene Name:	menin 1
Database Link:	Entrez Gene 4221 Human O00255

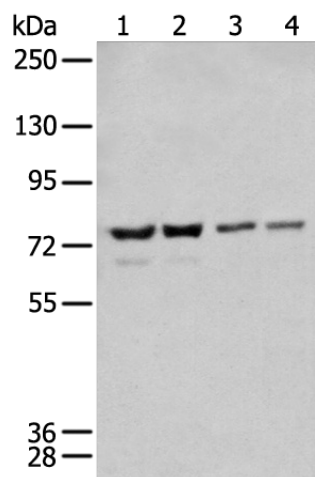
Background: This gene encodes menin, a putative tumor suppressor associated with a syndrome known as multiple endocrine neoplasia type 1. In vitro studies have shown menin is localized to the nucleus, possesses two functional nuclear localization signals, and inhibits transcriptional activation by JunD, however, the function of this protein is not known. Two messages have been detected on northern blots but the larger message has not been characterized. Alternative splicing results in multiple transcript variants.



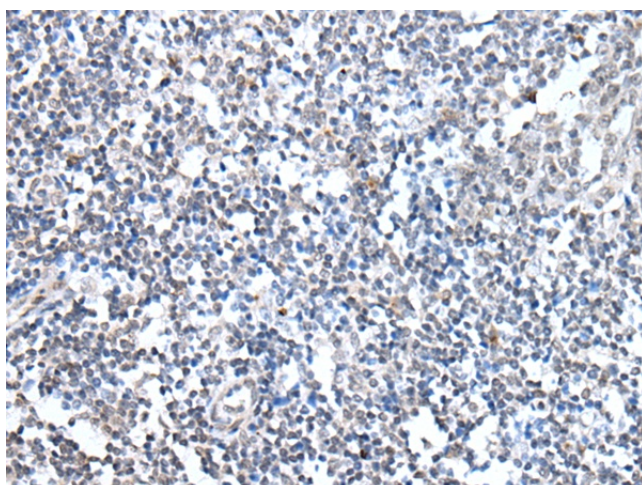
[View online »](#)

Synonyms: MEAI; menin; OTTHUMP00000070176; OTTHUMP00000070184; SCG2

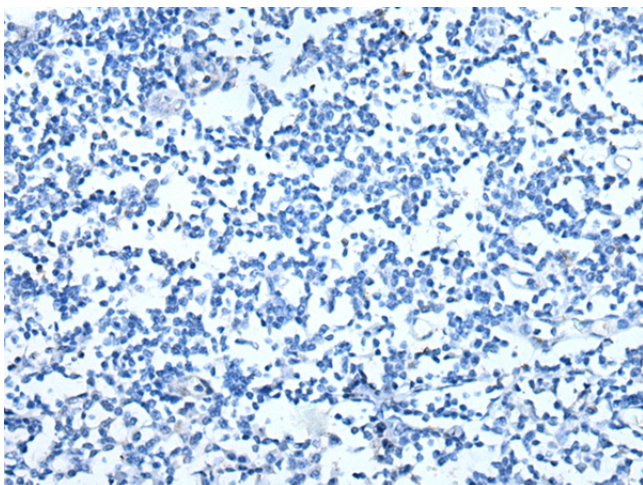
Product images:



Gel: 6%SDS-PAGE
 Lysate: 40 µg
 Lane 1-4: K562
 HeLa
 A431 and NIH/3T3 cell lysates
 Primary antibody: TA367642 (MEN1 Antibody) at dilution 1/200
 Secondary antibody: Goat anti rabbit IgG at 1/8000 dilution
 Exposure time: 10 seconds



Immunohistochemistry of paraffin-embedded Human tonsil tissue using TA367642 (MEN1 Antibody) at dilution 1/25 (Original magnification: ×200)



Immunohistochemistry of paraffin-embedded Human tonsil tissue using TA367642 (MEN1 Antibody) at dilution 1/25, treated with synthetic peptide. (Original magnification: $\times 200$)