

Product datasheet for **TA367624**

ARF5 Rabbit Polyclonal Antibody

Product data:

Product Type:	Primary Antibodies
Applications:	IHC, WB
Recommended Dilution:	WB: 500-2000 WB positive control: Raji cell, Mouse brain tissue, HeLa, A375 and 231 cell lysates IHC: 40-200 Positive control: Human tonsil Predicted cell location: Cytoplasm
Reactivity:	Human, Mouse, Rat
Host:	Rabbit
Isotype:	IgG
Clonality:	Polyclonal
Immunogen:	Synthetic peptide of human ARF5
Formulation:	pH7.4 PBS, 0.05% NaN ₃ , 40% Glycerol
Concentration:	lot specific
Purification:	Antigen affinity purification
Conjugation:	Unconjugated
Storage:	Store at -20°C.
Stability:	1 year
Predicted Protein Size:	21 kDa
Gene Name:	ADP ribosylation factor 5
Database Link:	Entrez Gene 381 Human P84085



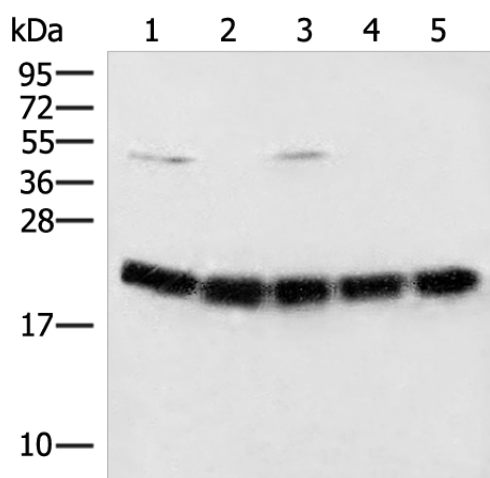
[View online »](#)

Background:

This gene is a member of the human ADP-ribosylation factor (ARF) gene family. These genes encode small guanine nucleotide-binding proteins that stimulate the ADP-ribosyltransferase activity of cholera toxin and play a role in vesicular trafficking and as activators of phospholipase D. The gene products include 6 ARF proteins and 11 ARF-like proteins and constitute 1 family of the RAS superfamily. The ARF proteins are categorized as class I (ARF1, ARF2, and ARF3), class II (ARF4 and ARF5) and class III (ARF6). The members of each class share a common gene organization.

Synonyms:

ARF5

Product images:


Gel: 12%SDS-PAGE

Lysate: 40 µg

Lane 1-5: Raji cell

Mouse brain tissue

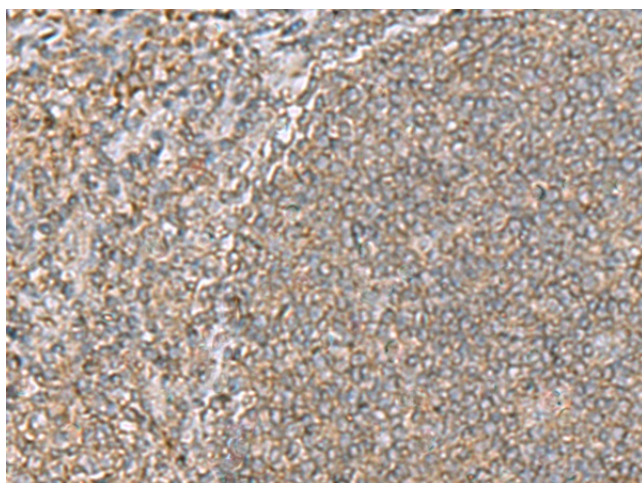
Hela

A375 and 231 cell lysates

Primary antibody: TA367624 (ARF5 Antibody) at dilution 1/400

Secondary antibody: Goat anti rabbit IgG at 1/8000 dilution

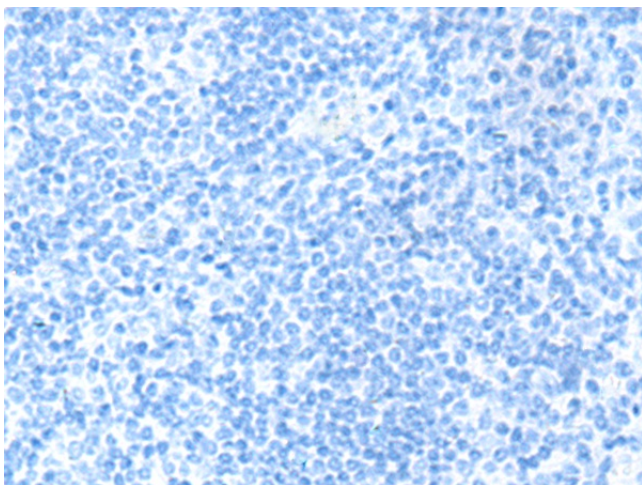
Exposure time: 10 seconds



Immunohistochemistry of paraffin-embedded

Human tonsil tissue using TA367624 (ARF5

Antibody) at dilution 1/55 (Original magnification: ×200)



Immunohistochemistry of paraffin-embedded Human tonsil tissue using TA367624 (ARF5 Antibody) at dilution 1/55, treated with synthetic peptide. (Original magnification: $\times 200$)