

Product datasheet for **TA367620S**

STEAP2 Rabbit Polyclonal Antibody

Product data:

Product Type:	Primary Antibodies
Applications:	IHC, WB
Recommended Dilution:	WB: 200-1000 WB positive control: Human stomach tissue, Human placenta tissue lysates IHC: 50-100 Positive control: Human esophagus cancer Predicted cell location: Cytoplasm and Cell membrane
Reactivity:	Human, Mouse, Rat
Host:	Rabbit
Isotype:	IgG
Clonality:	Polyclonal
Immunogen:	Synthetic peptide of human STEAP2
Formulation:	pH7.4 PBS, 0.05% NaN ₃ , 40% Glycerol
Purification:	Antigen affinity purification
Conjugation:	Unconjugated
Storage:	Store at -20°C.
Stability:	1 year
Predicted Protein Size:	56 kDa
Gene Name:	STEAP2 metalloreductase
Database Link:	Entrez Gene 261729 Human Q8NFT2

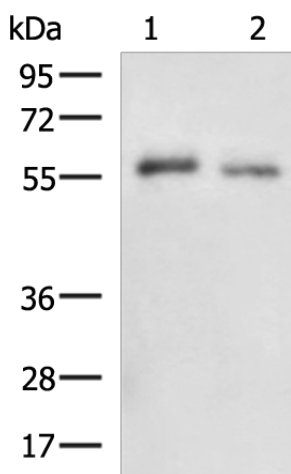
Background: This gene is a member of the STEAP family and encodes a multi-pass membrane protein that localizes to the Golgi complex, the plasma membrane, and the vesicular tubular structures in the cytosol. A highly similar protein in mouse has both ferrireductase and cupric reductase activity, and stimulates the cellular uptake of both iron and copper in vitro. Increased transcriptional expression of the human gene is associated with prostate cancer progression. Alternate transcriptional splice variants, encoding different isoforms, have been characterized.



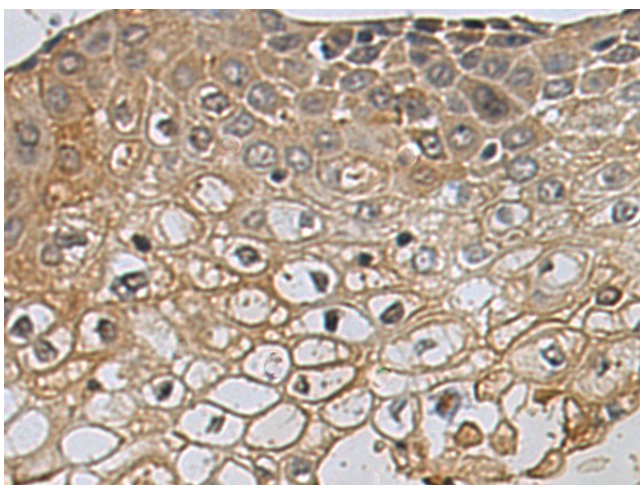
[View online »](#)

Synonyms: IPCA-1; IPCA1; OTTHUMP00000067572; OTTHUMP00000067575; PCANAP1; PUMPCn; STAMP1; STMP

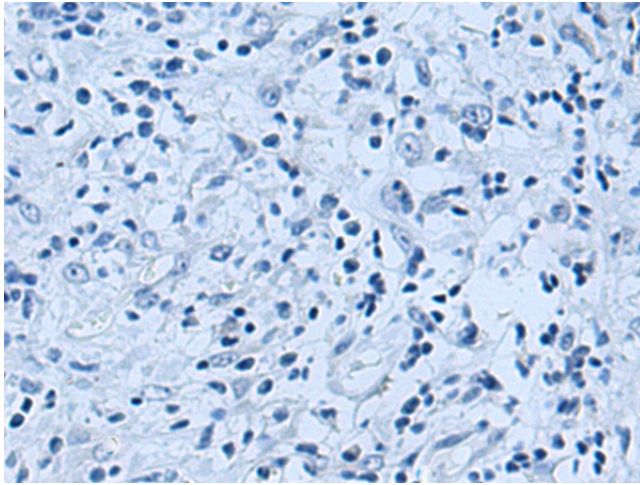
Product images:



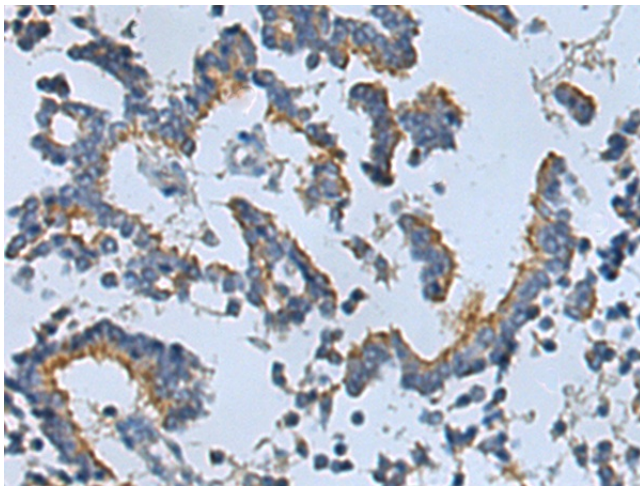
Gel: 8%SDS-PAGE
 Lysate: 40 µg
 Lane 1-2: Human stomach tissue
 Human placenta tissue lysates
 Primary antibody: [TA367620] (STEAP2 Antibody)
 at dilution 1/400
 Secondary antibody: Goat anti rabbit IgG at
 1/5000 dilution
 Exposure time: 10 minutes



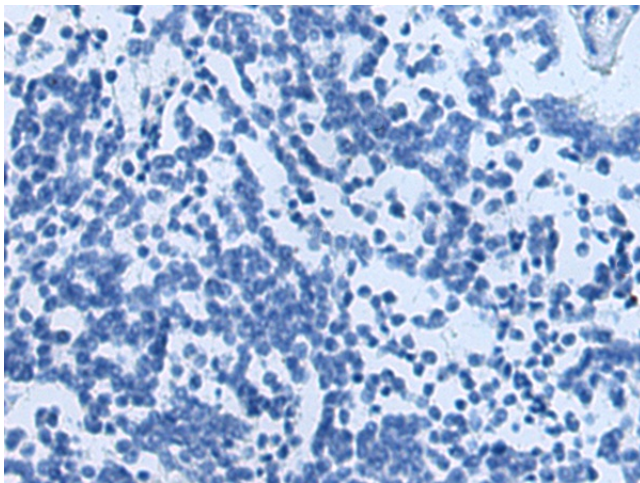
Immunohistochemistry of paraffin-embedded
 Human esophagus cancer tissue using
 [TA367620] (STEAP2 Antibody) at dilution 1/35
 (Original magnification: ×200)



Immunohistochemistry of paraffin-embedded Human esophagus cancer tissue using [TA367620] (STEAP2 Antibody) at dilution 1/35, treated with synthetic peptide. (Original magnification: ×200)



Immunohistochemistry of paraffin-embedded Human liver cancer tissue using [TA367620] (STEAP2 Antibody) at dilution 1/35 (Original magnification: ×200)



Immunohistochemistry of paraffin-embedded Human liver cancer tissue using [TA367620] (STEAP2 Antibody) at dilution 1/35, treated with synthetic peptide. (Original magnification: ×200)