

## Product datasheet for **TA367615**

### ALS2CL Rabbit Polyclonal Antibody

#### Product data:

Product Type:	Primary Antibodies
Applications:	IHC
Recommended Dilution:	IHC: 25-100 Positive control: Human cervical cancer Predicted cell location: Cytoplasm
Reactivity:	Human, Mouse
Host:	Rabbit
Isotype:	IgG
Clonality:	Polyclonal
Immunogen:	Synthetic peptide of human ALS2CL
Formulation:	pH7.4 PBS, 0.05% NaN <sub>3</sub> , 40% Glycerol
Concentration:	lot specific
Purification:	Antigen affinity purification
Conjugation:	Unconjugated
Storage:	Store at -20°C.
Stability:	1 year
Gene Name:	ALS2 C-terminal like
Database Link:	<a href="#">Entrez Gene 259173 Human Q60I27</a>

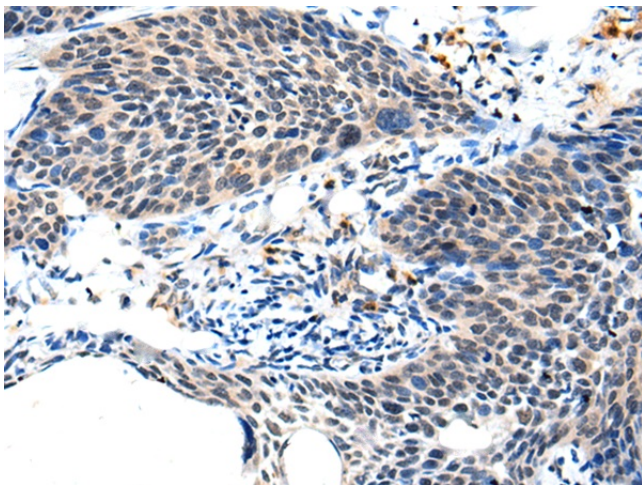
**Background:** Mutations in the ALS2 gene result in a number of juvenile recessive motor neuron diseases (MNDs), including juvenile primary lateral sclerosis (JPLS), a recessive form of amyotrophic lateral sclerosis (ALS2), infantile onset ascending hereditary spastic paralysis (IAHSP) and a form of complicated hereditary spastic paraplegia (cHSP). The ALS2 gene encodes the Alsln protein. Alsln acts as a guanine nucleotide exchange factor for Rab5, a modulator of the endocytic pathway. Alsln is a cytosolic protein, which is associated with small, punctate membrane structures. Therefore Alsln may mediate membrane transport events, potentially linking endocytic processes and actin cytoskeleton remodeling. The ALS2 C-terminal like protein (ALS2CL) also modulates Rab5 activity.



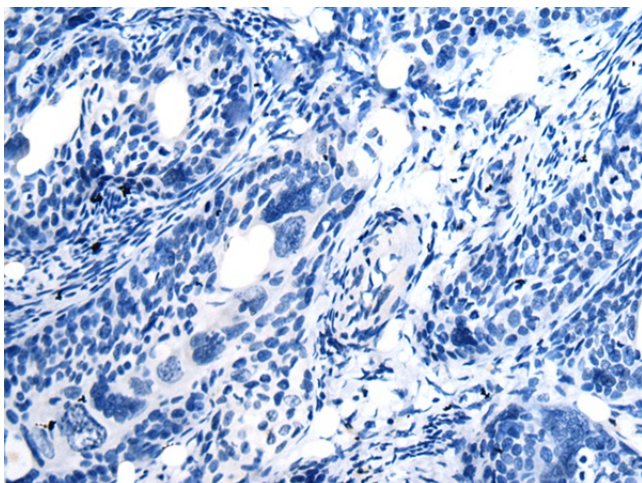
[View online »](#)

**Synonyms:** DKFZp686I0110; DKFZp686P238; FLJ36525; MGC129698; OTTHUMP00000209941; RN49018

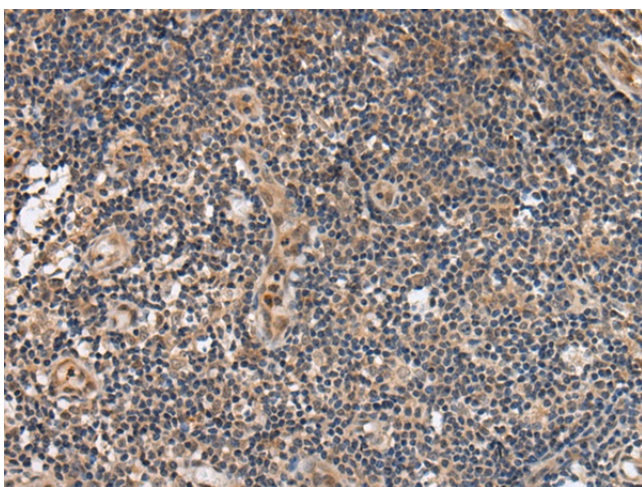
**Product images:**



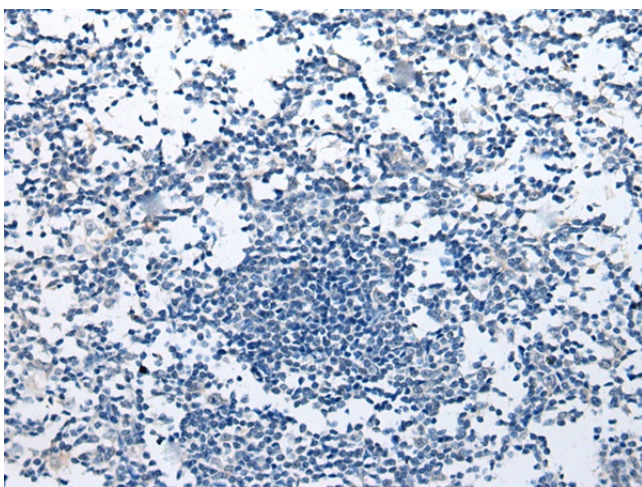
Immunohistochemistry of paraffin-embedded Human cervical cancer tissue using TA367615 (ALS2CL Antibody) at dilution 1/20 (Original magnification: ×200)



Immunohistochemistry of paraffin-embedded Human cervical cancer tissue using TA367615 (ALS2CL Antibody) at dilution 1/20, treated with synthetic peptide. (Original magnification: ×200)



Immunohistochemistry of paraffin-embedded Human tonsil tissue using TA367615 (ALS2CL Antibody) at dilution 1/20 (Original magnification: ×200)



Immunohistochemistry of paraffin-embedded Human tonsil tissue using TA367615 (ALS2CL Antibody) at dilution 1/20, treated with synthetic peptide. (Original magnification: ×200)