

Product datasheet for TA367613S

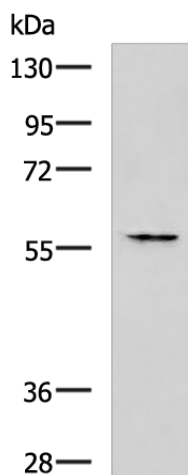
MCT7 (SLC16A6) Rabbit Polyclonal Antibody

Product data:

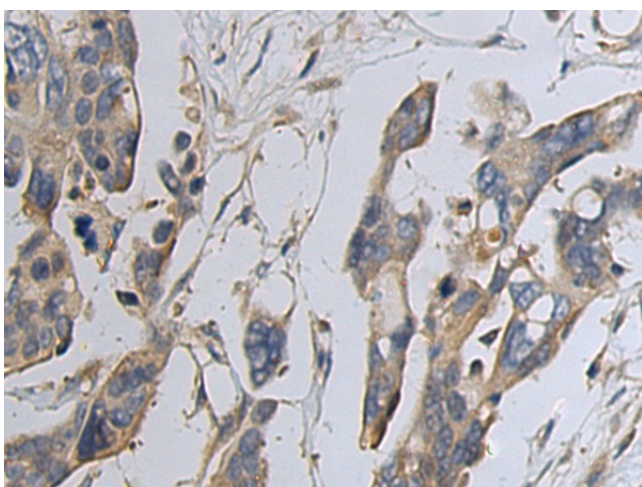
Product Type:	Primary Antibodies
Applications:	IHC, WB
Recommended Dilution:	WB: 500-2000 WB positive control: Jurkat cell lysate IHC: 50-100 Positive control: Human colorectal cancer Predicted cell location: Cytoplasm
Reactivity:	Human
Host:	Rabbit
Isotype:	IgG
Clonality:	Polyclonal
Immunogen:	Synthetic peptide of human SLC16A6
Formulation:	pH7.4 PBS, 0.05% NaN ₃ , 40% Glycerol
Purification:	Antigen affinity purification
Conjugation:	Unconjugated
Storage:	Store at -20°C.
Stability:	1 year
Predicted Protein Size:	57 kDa
Gene Name:	solute carrier family 16 member 6
Database Link:	Entrez Gene 9120 Human O15403
Background:	Proton-linked monocarboxylate transporter. Catalyzes the rapid transport across the plasma membrane of many monocarboxylates such as lactate, pyruvate, branched-chain oxo acids derived from leucine, valine and isoleucine, and the ketone bodies acetoacetate, beta-hydroxybutyrate and acetate.
Synonyms:	MCT6; MCT7


[View online »](#)

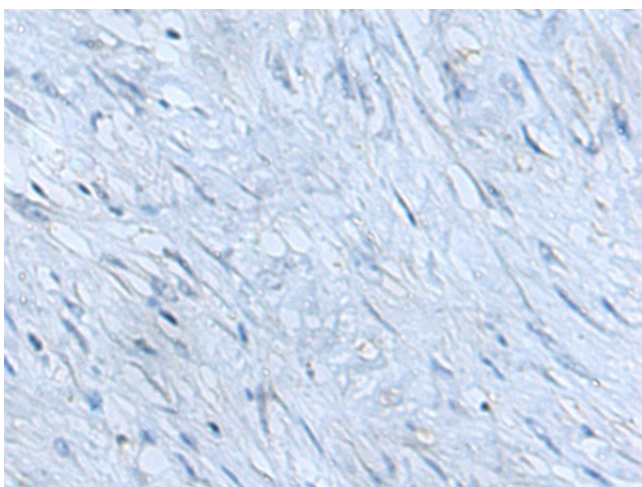
Product images:



Gel: 8%SDS-PAGE
 Lysate: 40 μ g
 Lane: Jurkat cell lysate
 Primary antibody: [TA367613] (SLC16A6 Antibody) at dilution 1/1000
 Secondary antibody: Goat anti rabbit IgG at 1/5000 dilution
 Exposure time: 5 minutes



Immunohistochemistry of paraffin-embedded Human colorectal cancer tissue using [TA367613] (SLC16A6 Antibody) at dilution 1/45 (Original magnification: $\times 200$)



Immunohistochemistry of paraffin-embedded Human colorectal cancer tissue using [TA367613] (SLC16A6 Antibody) at dilution 1/45, treated with synthetic peptide. (Original magnification: ×200)