

## Product datasheet for **TA367598**

### PRH2 Rabbit Polyclonal Antibody

#### Product data:

Product Type:	Primary Antibodies
Applications:	IHC
Recommended Dilution:	IHC: 25-100 Positive control: Human esophagus cancer Predicted cell location: Secreted
Reactivity:	Human
Host:	Rabbit
Isotype:	IgG
Clonality:	Polyclonal
Immunogen:	Synthetic peptide of human PRH2
Formulation:	pH7.4 PBS, 0.05% NaN <sub>3</sub> , 40% Glycerol
Concentration:	lot specific
Purification:	Antigen affinity purification
Conjugation:	Unconjugated
Storage:	Store at -20°C.
Stability:	1 year
Gene Name:	proline-rich protein Haelll subfamily 2
Database Link:	<a href="#">Entrez Gene 5555 Human P02810</a>

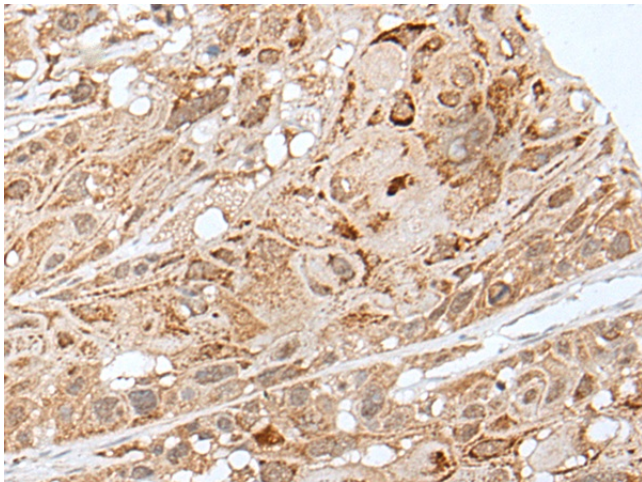
**Background:** PRH1 (acidic salivary proline-rich protein, Haelll type, 1) and PRH2 (acidic salivary proline-rich protein, Haelll type, 2), contain repeated cleavage sites for the restriction enzyme Haelll and code for PRPs. PRH1/2, also known as salivary acidic proline-rich phosphoprotein 1/2, PRP-1/PRP-2 or parotid proline-rich protein 1/2, is a 166 amino acid secreted protein that functions as a highly potent inhibitor of calcium phosphate crystal growth. Similar to other PRPs, PRH1/2 provides a protective and reparative environment for dental enamel, which is important for teeth integrity.



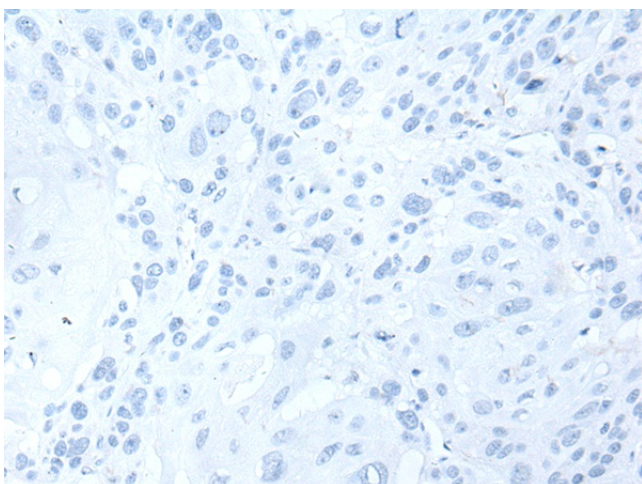
[View online »](#)

**Synonyms:**

Db-s; DKFZp686B01256; DKFZp686F14256; DKFZp686I11251; DKFZp686J06255;  
DKFZp686L01253; DKFZp686L16244; DKFZp686M04243; DKFZp686N24248; Pa; PIF-S; Pr;  
Pr1/Pr2; PRP-1/PRP-2

**Product images:**

Immunohistochemistry of paraffin-embedded Human esophagus cancer tissue using TA367598 (PRH2 Antibody) at dilution 1/30 (Original magnification:  $\times 200$ )



Immunohistochemistry of paraffin-embedded Human esophagus cancer tissue using TA367598 (PRH2 Antibody) at dilution 1/30, treated with synthetic peptide. (Original magnification:  $\times 200$ )