

Product datasheet for **TA367590**

GSK3 alpha (GSK3A) Rabbit Polyclonal Antibody

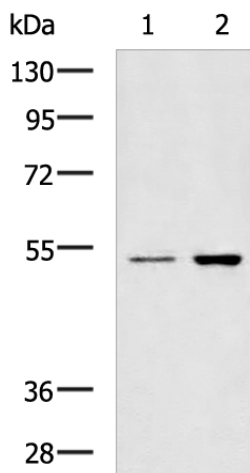
Product data:

Product Type:	Primary Antibodies
Applications:	IHC, WB
Recommended Dilution:	WB: 500-2000 WB positive control: Human cerebella tissue, Human cerebrum tissue lysates IHC: 50-200 Positive control: Human liver cancer Predicted cell location: Cytoplasm and Cell membrane
Reactivity:	Human, Mouse, Rat
Host:	Rabbit
Isotype:	IgG
Clonality:	Polyclonal
Immunogen:	Synthetic peptide of human GSK3A
Formulation:	pH7.4 PBS, 0.05% NaN ₃ , 40% Glycerol
Concentration:	lot specific
Purification:	Antigen affinity purification
Conjugation:	Unconjugated
Storage:	Store at -20°C.
Stability:	1 year
Predicted Protein Size:	51 kDa
Gene Name:	glycogen synthase kinase 3 alpha
Database Link:	Entrez Gene 2931 Human P49840
Background:	This gene encodes a multifunctional Ser/Thr protein kinase that is implicated in the control of several regulatory proteins including glycogen synthase, and transcription factors, such as JUN. It also plays a role in the WNT and PI3K signaling pathways, as well as regulates the production of beta-amyloid peptides associated with Alzheimer's disease.
Synonyms:	DKFZp686D0638; OTTHUMP00000198368

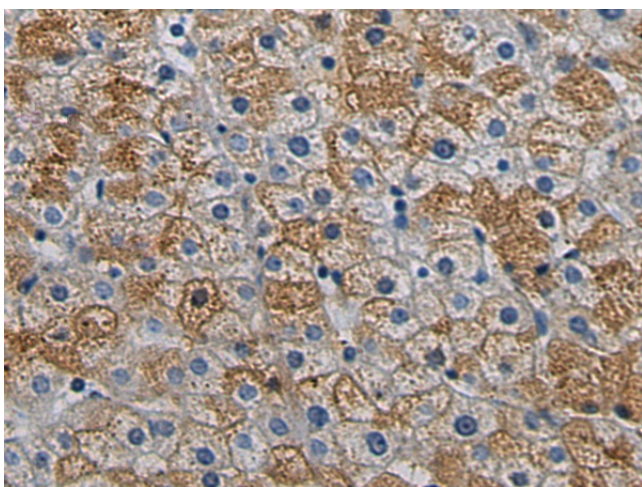


[View online »](#)

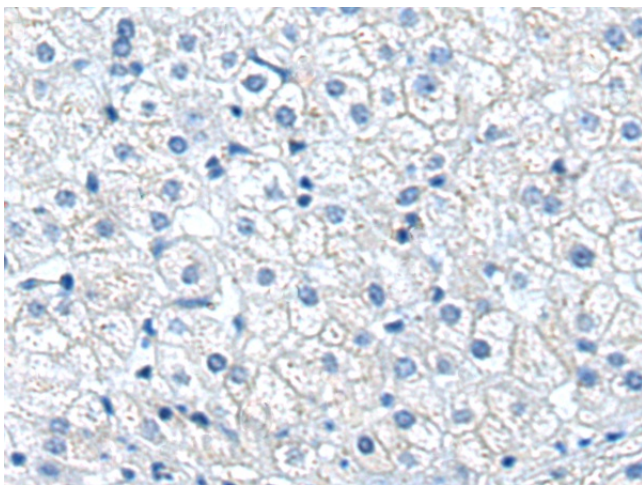
Product images:



Gel: 8%SDS-PAGE
 Lysate: 40 µg
 Lane 1-2: Human cerebella tissue
 Human cerebrum tissue lysates
 Primary antibody: TA367590 (GSK3A Antibody) at dilution 1/1000
 Secondary antibody: Goat anti rabbit IgG at 1/5000 dilution
 Exposure time: 1 minute



Immunohistochemistry of paraffin-embedded Human liver cancer tissue using TA367590 (GSK3A Antibody) at dilution 1/45 (Original magnification: ×200)



Immunohistochemistry of paraffin-embedded Human liver cancer tissue using TA367590 (GSK3A Antibody) at dilution 1/45, treated with synthetic peptide. (Original magnification: ×200)