

## Product datasheet for **TA367579S**

### Glypican 2 (GPC2) Rabbit Polyclonal Antibody

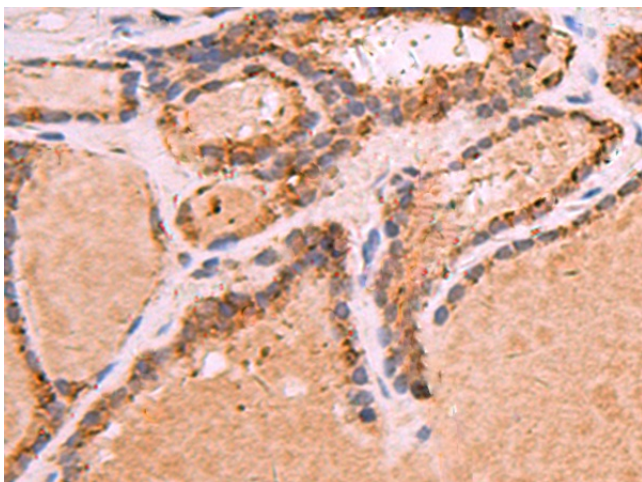
#### Product data:

Product Type:	Primary Antibodies
Applications:	IHC
Recommended Dilution:	IHC: 30-150 Positive control: Human thyroid cancer Predicted cell location: Cytoplasm
Reactivity:	Human
Host:	Rabbit
Isotype:	IgG
Clonality:	Polyclonal
Immunogen:	Synthetic peptide of human GPC2
Formulation:	pH7.4 PBS, 0.05% NaN <sub>3</sub> , 40% Glycerol
Purification:	Antigen affinity purification
Conjugation:	Unconjugated
Storage:	Store at -20°C.
Stability:	1 year
Gene Name:	glypican 2
Database Link:	<a href="#">Entrez Gene 221914 Human Q8N158</a>
Background:	Cell surface proteoglycan that bears heparan sulfate. May fulfill a function related to the motile behaviors of developing neurons (By similarity).
Synonyms:	cerebroglycan; DKFZp547M109; FLJ38962

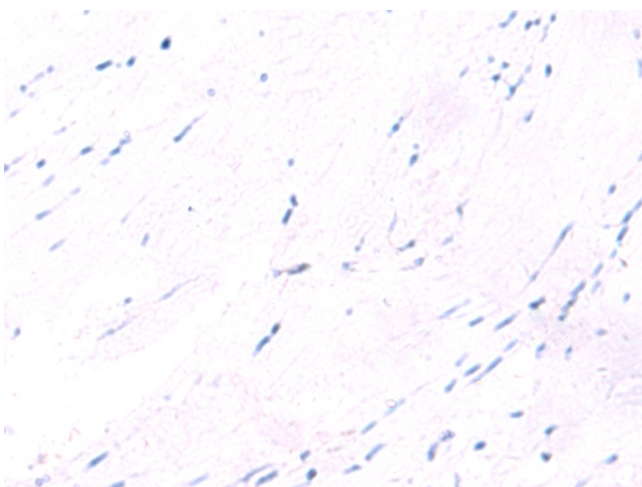


[View online »](#)

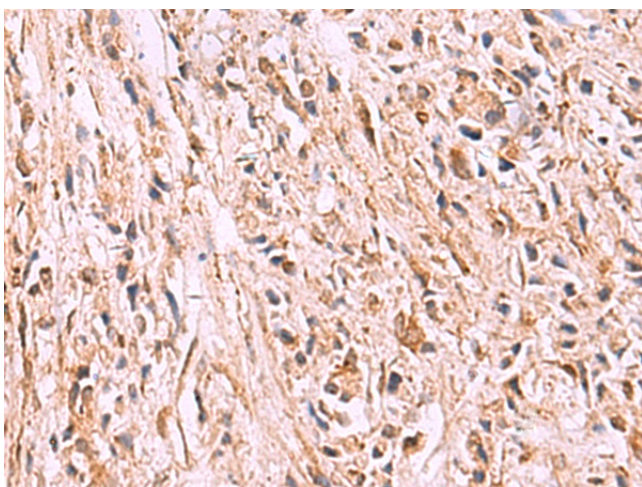
## Product images:



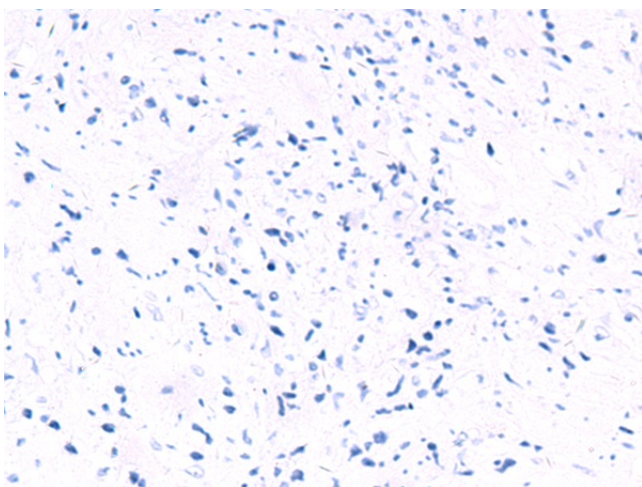
Immunohistochemistry of paraffin-embedded Human thyroid cancer tissue using [TA367579] (GPC2 Antibody) at dilution 1/35 (Original magnification: ×200)



Immunohistochemistry of paraffin-embedded Human thyroid cancer tissue using [TA367579] (GPC2 Antibody) at dilution 1/35, treated with synthetic peptide. (Original magnification: ×200)



Immunohistochemistry of paraffin-embedded Human prostate cancer tissue using [TA367579] (GPC2 Antibody) at dilution 1/35 (Original magnification: ×200)



Immunohistochemistry of paraffin-embedded Human prostate cancer tissue using [TA367579] (GPC2 Antibody) at dilution 1/35, treated with synthetic peptide. (Original magnification: ×200)