

## Product datasheet for **TA367561S**

### EGR2 Rabbit Polyclonal Antibody

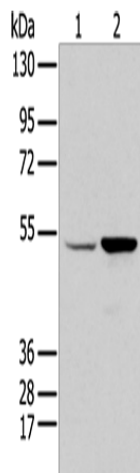
#### Product data:

Product Type:	Primary Antibodies
Applications:	IHC, WB
Recommended Dilution:	WB: 500-2000 WB positive control: HEPG2 and 231 cell IHC: 20-100 Positive control: Human tonsil Predicted cell location: Nucleus
Reactivity:	Human, Mouse, Rat
Host:	Rabbit
Isotype:	IgG
Clonality:	Polyclonal
Immunogen:	Synthetic peptide of human EGR2
Formulation:	pH7.4 PBS, 0.05% NaN <sub>3</sub> , 40% Glycerol
Purification:	Antigen affinity purification
Conjugation:	Unconjugated
Storage:	Store at -20°C.
Stability:	1 year
Predicted Protein Size:	50 kDa
Gene Name:	early growth response 2
Database Link:	<a href="#">Entrez Gene 1959 Human P11161</a>
Background:	The protein encoded by this gene is a transcription factor with three tandem C2H2-type zinc fingers. Defects in this gene are associated with Charcot-Marie-Tooth disease type 1D (CMT1D), Charcot-Marie-Tooth disease type 4E (CMT4E), and with Dejerine-Sottas syndrome (DSS). Multiple transcript variants encoding two different isoforms have been found for this gene.
Synonyms:	AT591; CMT1D; CMT4E; DKFZp686j1957; EGR-2; FLJ14547; KROX20



[View online »](#)

## Product images:



Gel: 8%SDS-PAGE

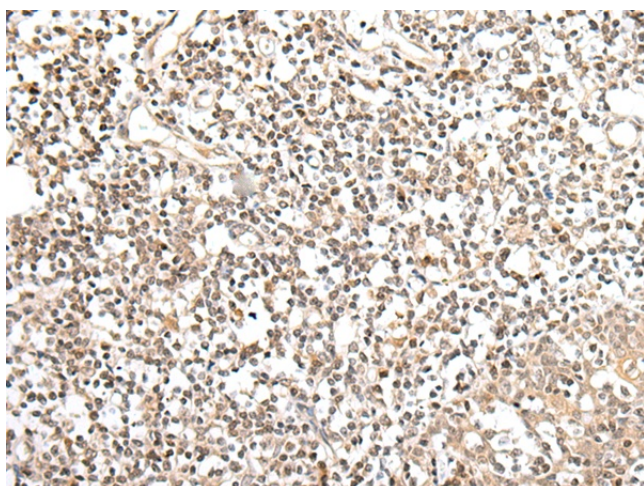
Lysate: 40  $\mu$ g

Lane 1-2: HEPG2 and 231 cell

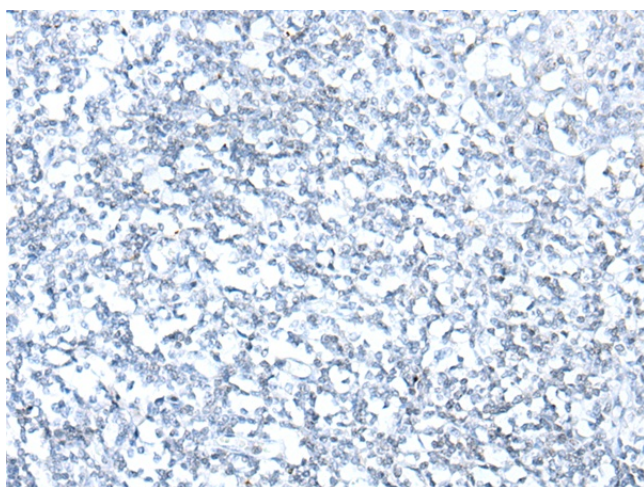
Primary antibody: [TA367561] (EGR2 Antibody) at dilution 1/350

Secondary antibody: Goat anti rabbit IgG at 1/8000 dilution

Exposure time: 10 seconds



Immunohistochemistry of paraffin-embedded Human tonsil tissue using [TA367561] (EGR2 Antibody) at dilution 1/20 (Original magnification:  $\times 200$ )



Immunohistochemistry of paraffin-embedded Human tonsil tissue using [TA367561] (EGR2 Antibody) at dilution 1/20, treated with synthetic peptide. (Original magnification:  $\times 200$ )