

## Product datasheet for **TA367556S**

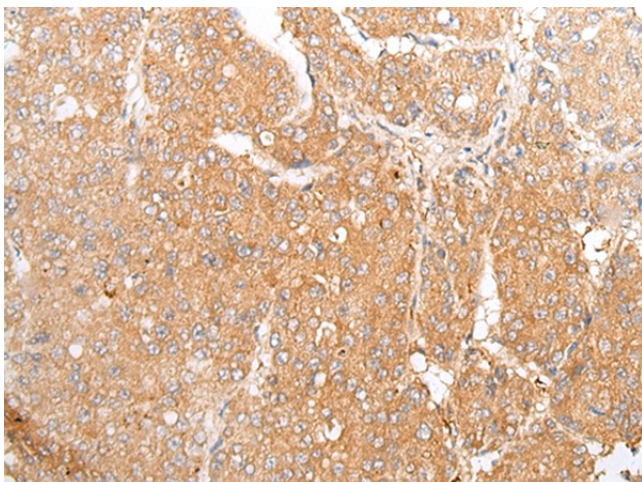
### **TMEM107 Rabbit Polyclonal Antibody**

#### **Product data:**

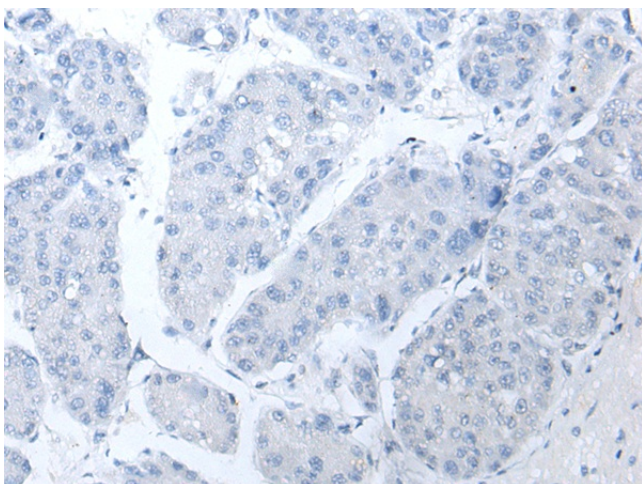
Product Type:	Primary Antibodies
Applications:	IHC
Recommended Dilution:	IHC: 25-100 Positive control: Human liver cancer Predicted cell location: Cytoplasm and Cell membrane
Reactivity:	Human
Host:	Rabbit
Isotype:	IgG
Clonality:	Polyclonal
Immunogen:	Synthetic peptide of human TMEM107
Formulation:	pH7.4 PBS, 0.05% NaN <sub>3</sub> , 40% Glycerol
Purification:	Antigen affinity purification
Conjugation:	Unconjugated
Storage:	Store at -20°C.
Stability:	1 year
Gene Name:	transmembrane protein 107
Database Link:	<a href="#">Entrez Gene 84314 Human Q6UX40</a>
Background:	Plays a role in cilia formation and embryonic patterning. Requires for normal Sonic hedgehog (Shh) signaling in the neural tube and acts in combination with GLI2 and GLI3 to pattern ventral and intermediate neuronal cell types (By similarity).
Synonyms:	GRVS638; MGC10744; PRO1268



[View online »](#)

**Product images:**


Immunohistochemistry of paraffin-embedded Human liver cancer tissue using [TA367556] (TMEM107 Antibody) at dilution 1/20 (Original magnification: ×200)



Immunohistochemistry of paraffin-embedded Human liver cancer tissue using [TA367556] (TMEM107 Antibody) at dilution 1/20, treated with synthetic peptide. (Original magnification: ×200)