

## Product datasheet for **TA367555**

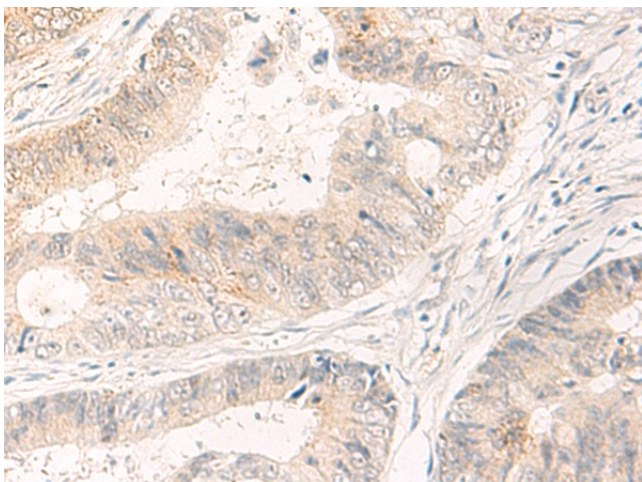
### **SYT16 Rabbit Polyclonal Antibody**

#### **Product data:**

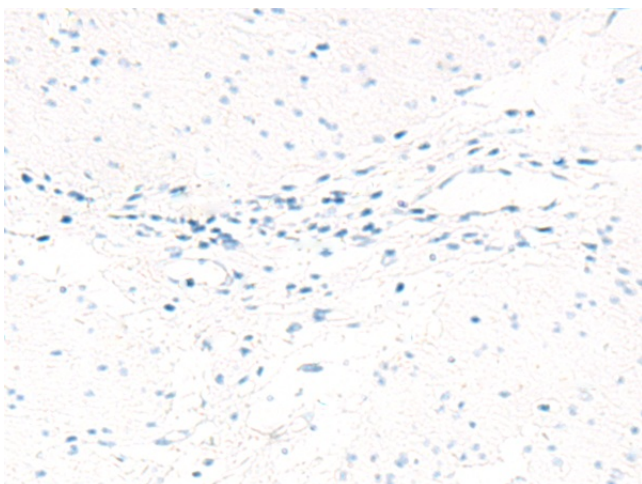
Product Type:	Primary Antibodies
Applications:	IHC
Recommended Dilution:	IHC: 25-100 Positive control: Human colorectal cancer Predicted cell location: Cytoplasm
Reactivity:	Human, Mouse
Host:	Rabbit
Isotype:	IgG
Clonality:	Polyclonal
Immunogen:	Synthetic peptide of human SYT16
Formulation:	pH7.4 PBS, 0.05% NaN <sub>3</sub> , 40% Glycerol
Concentration:	lot specific
Purification:	Antigen affinity purification
Conjugation:	Unconjugated
Storage:	Store at -20°C.
Stability:	1 year
Gene Name:	synaptotagmin 16
Database Link:	<a href="#">Entrez Gene 83851 Human Q17RD7</a>
Background:	May be involved in the trafficking and exocytosis of secretory vesicles in non-neuronal tissues. Is Ca <sup>2+</sup> -independent.
Synonyms:	CHR14SYT; Strep14; SYT14L; syt14r; yt14r



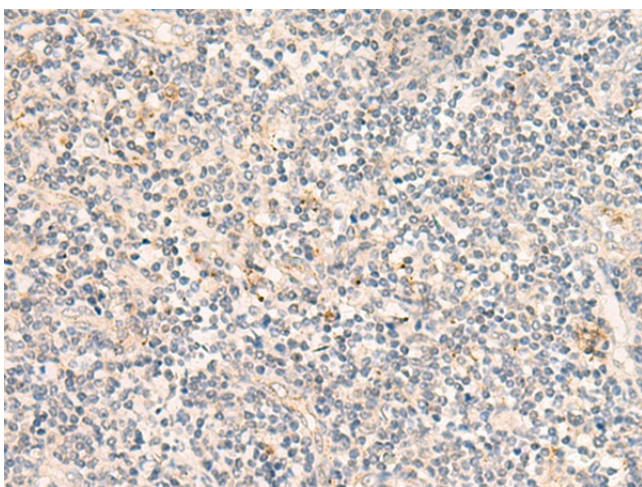
[View online »](#)

**Product images:**

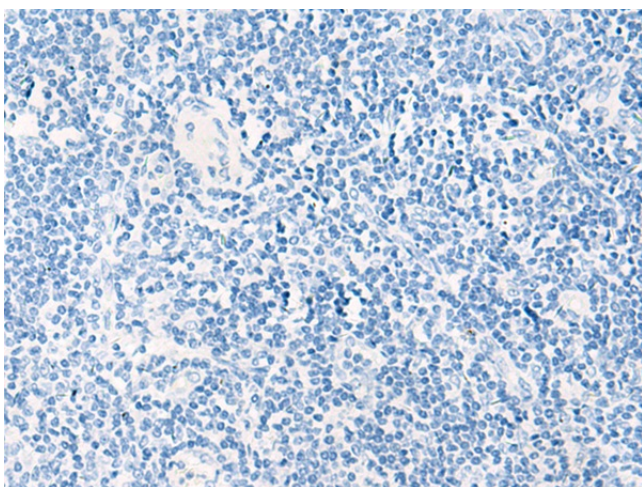
Immunohistochemistry of paraffin-embedded Human colorectal cancer tissue using TA367555 (SYT16 Antibody) at dilution 1/30 (Original magnification:  $\times 200$ )



Immunohistochemistry of paraffin-embedded Human colorectal cancer tissue using TA367555 (SYT16 Antibody) at dilution 1/30, treated with synthetic peptide. (Original magnification:  $\times 200$ )



Immunohistochemistry of paraffin-embedded Human tonsil tissue using TA367555 (SYT16 Antibody) at dilution 1/30 (Original magnification:  $\times 200$ )



Immunohistochemistry of paraffin-embedded Human tonsil tissue using TA367555 (SYT16 Antibody) at dilution 1/30, treated with synthetic peptide. (Original magnification:  $\times 200$ )