

Product datasheet for TA367548S

P2Y4 (P2RY4) Rabbit Polyclonal Antibody

Product data:

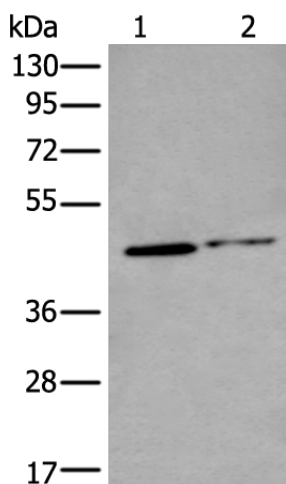
Product Type:	Primary Antibodies
Applications:	WB
Recommended Dilution:	WB: 200-1000 WB positive control: A549 and 823 cell lysates
Reactivity:	Human
Host:	Rabbit
Isotype:	IgG
Clonality:	Polyclonal
Immunogen:	Synthetic peptide of human P2RY4
Formulation:	pH7.4 PBS, 0.05% NaN ₃ , 40% Glycerol
Purification:	Antigen affinity purification
Conjugation:	Unconjugated
Storage:	Store at -20°C.
Stability:	1 year
Predicted Protein Size:	41 kDa
Gene Name:	pyrimidinergic receptor P2Y4
Database Link:	Entrez Gene 5030 Human P51582

Background: The product of this gene belongs to the family of G-protein coupled receptors. This family has several receptor subtypes with different pharmacological selectivity, which overlaps in some cases, for various adenosine and uridine nucleotides. This receptor is responsive to uridine nucleotides, partially responsive to ATP, and not responsive to ADP.

Synonyms: NRU; P2P; P2Y4; UNR


[View online »](#)

Product images:



Gel: 8%SDS-PAGE
 Lysate: 40 µg
 Lane 1-2: A549 and 823 cell lysates
 Primary antibody: [TA367548] (P2RY4 Antibody)
 at dilution 1/200
 Secondary antibody: Goat anti rabbit IgG at
 1/8000 dilution
 Exposure time: 1 minute