

Product datasheet for **TA367541S**

NGK2C (KLRC2) Rabbit Polyclonal Antibody

Product data:

Product Type:	Primary Antibodies
Applications:	IHC, WB
Recommended Dilution:	WB: 200-1000 WB positive control: K562□Jurkat□MCF-7 and 293T cell IHC: 25-100 Positive control: Human brain Predicted cell location: Cell membrane
Reactivity:	Human
Host:	Rabbit
Isotype:	IgG
Clonality:	Polyclonal
Immunogen:	Synthetic peptide of human KLRC2
Formulation:	pH7.4 PBS, 0.05% NaN ₃ , 40% Glycerol
Purification:	Antigen affinity purification
Conjugation:	Unconjugated
Storage:	Store at -20°C.
Stability:	1 year
Predicted Protein Size:	26 kDa
Gene Name:	killer cell lectin like receptor C2
Database Link:	Entrez Gene 3822 Human P26717

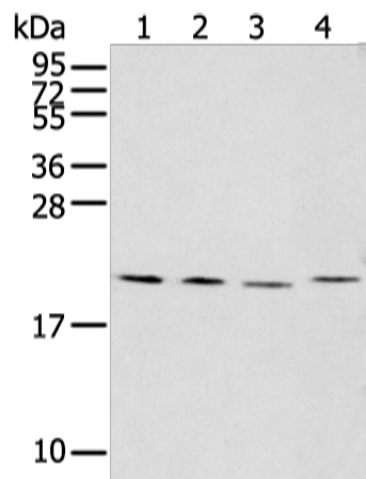
Background: Natural killer (NK) cells are lymphocytes that can mediate lysis of certain tumor cells and virus-infected cells without previous activation. They can also regulate specific humoral and cell-mediated immunity. NK cells preferentially express several calcium-dependent (C-type) lectins, which have been implicated in the regulation of NK cell function. The group, designated KLRC (NKG2) are expressed primarily in natural killer (NK) cells and encodes a family of transmembrane proteins characterized by a type II membrane orientation (extracellular C terminus) and the presence of a C-type lectin domain.



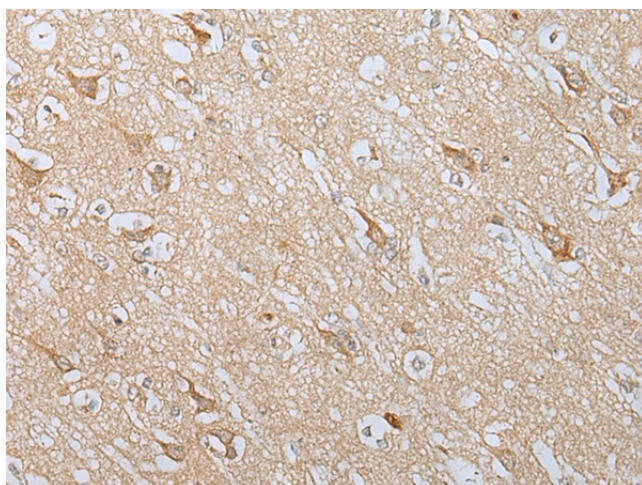
[View online »](#)

Synonyms: CD159c; MGC138244; NKG2-C; NKG2C

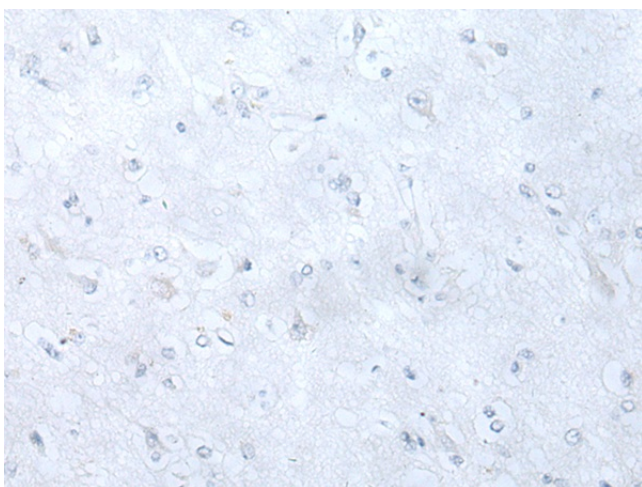
Product images:



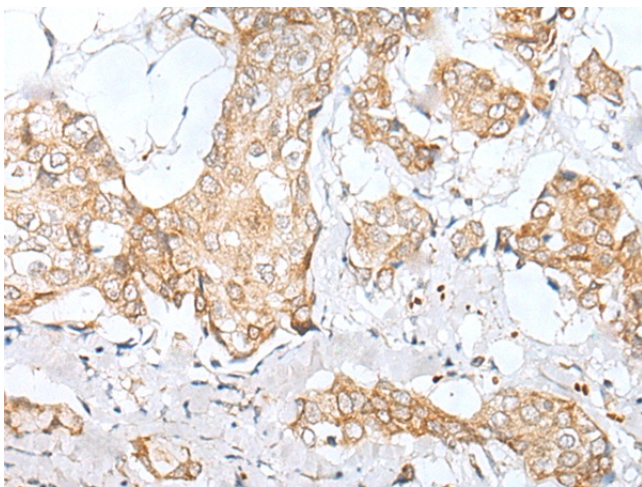
Gel: 12%SDS-PAGE
 Lysate: 40 µg
 Lane 1-4: K562
 Jurkat
 MCF-7 and 293T cell
 Primary antibody: [TA367541] (KLRC2 Antibody)
 at dilution 1/200
 Secondary antibody: Goat anti rabbit IgG at
 1/8000 dilution
 Exposure time: 1 minute



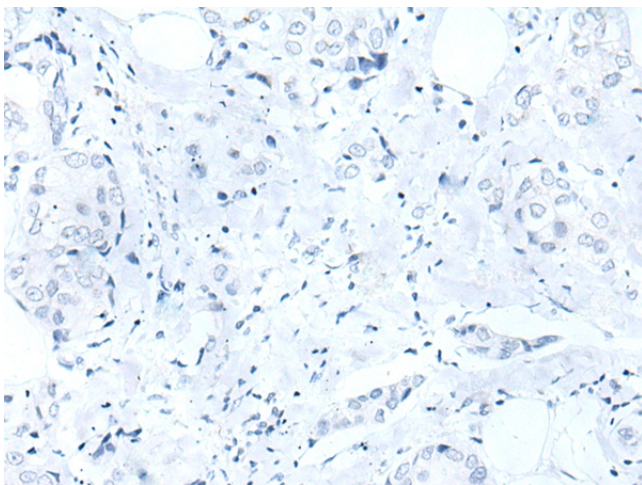
Immunohistochemistry of paraffin-embedded
 Human brain tissue using [TA367541] (KLRC2
 Antibody) at dilution 1/30 (Original magnification:
 ×200)



Immunohistochemistry of paraffin-embedded Human brain tissue using [TA367541] (KLRC2 Antibody) at dilution 1/30, treated with synthetic peptide. (Original magnification: $\times 200$)



Immunohistochemistry of paraffin-embedded Human breast cancer tissue using [TA367541] (KLRC2 Antibody) at dilution 1/30 (Original magnification: $\times 200$)



Immunohistochemistry of paraffin-embedded Human breast cancer tissue using [TA367541] (KLRC2 Antibody) at dilution 1/30, treated with synthetic peptide. (Original magnification: $\times 200$)