

## Product datasheet for **TA367540S**

### SLC4A3 Rabbit Polyclonal Antibody

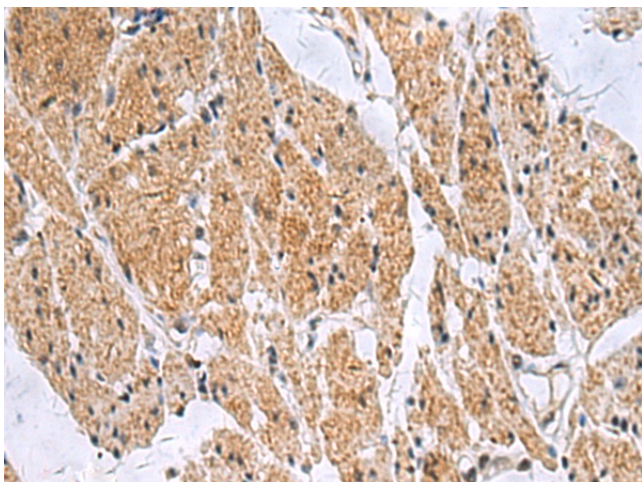
#### Product data:

Product Type:	Primary Antibodies
Applications:	IHC
Recommended Dilution:	IHC: 50-100 Positive control: Human esophagus cancer Predicted cell location: Cell membrane
Reactivity:	Human, Mouse, Rat
Host:	Rabbit
Isotype:	IgG
Clonality:	Polyclonal
Immunogen:	Synthetic peptide of human SLC4A3
Formulation:	pH7.4 PBS, 0.05% NaN <sub>3</sub> , 40% Glycerol
Purification:	Antigen affinity purification
Conjugation:	Unconjugated
Storage:	Store at -20°C.
Stability:	1 year
Gene Name:	solute carrier family 4 member 3
Database Link:	<a href="#">Entrez Gene 6508 Human P48751</a>
Background:	The protein encoded by this gene is a plasma membrane anion exchange protein. The encoded protein has been found in brain, heart, kidney, small intestine, and lung.
Synonyms:	AE3; CAE3/BAE3; OTTHUMP00000065427; OTTHUMP00000196386; SLC2C

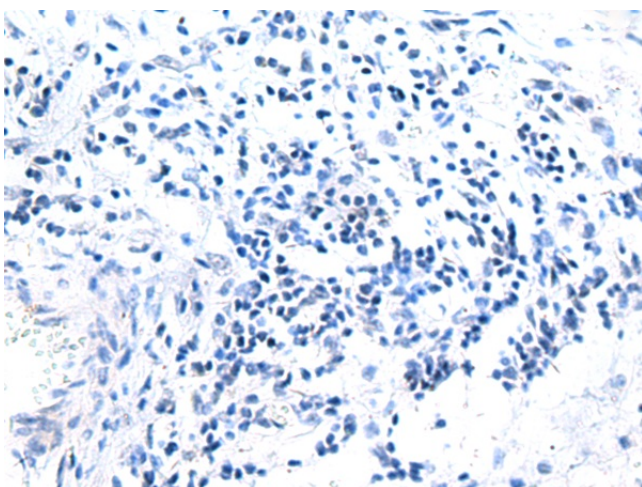


[View online »](#)

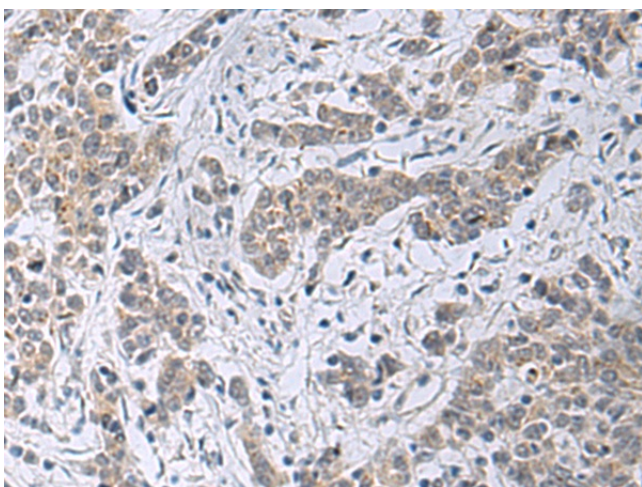
## Product images:



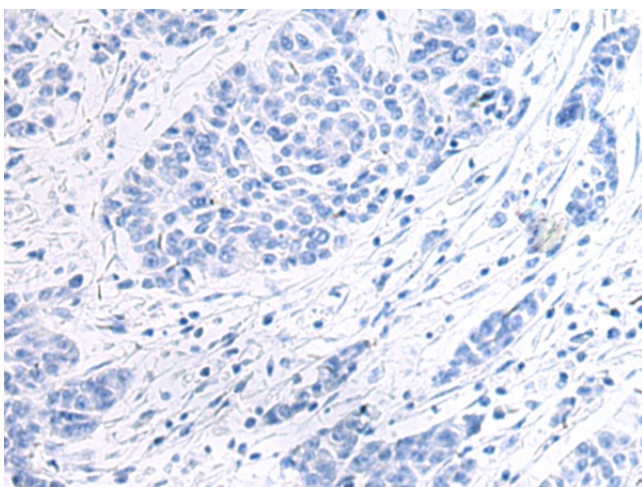
Immunohistochemistry of paraffin-embedded Human esophagus cancer tissue using [TA367540] (SLC4A3 Antibody) at dilution 1/35 (Original magnification:  $\times 200$ )



Immunohistochemistry of paraffin-embedded Human esophagus cancer tissue using [TA367540] (SLC4A3 Antibody) at dilution 1/35, treated with synthetic peptide. (Original magnification:  $\times 200$ )



Immunohistochemistry of paraffin-embedded Human colorectal cancer tissue using [TA367540] (SLC4A3 Antibody) at dilution 1/35 (Original magnification: ×200)



Immunohistochemistry of paraffin-embedded Human colorectal cancer tissue using [TA367540] (SLC4A3 Antibody) at dilution 1/35, treated with synthetic peptide. (Original magnification: ×200)