

## Product datasheet for **TA367532**

### ADAMTS8 Rabbit Polyclonal Antibody

#### Product data:

Product Type:	Primary Antibodies
Applications:	IHC
Recommended Dilution:	IHC: 100-300 Positive control: Human liver cancer Predicted cell location: Cytoplasm
Reactivity:	Human, Mouse
Host:	Rabbit
Isotype:	IgG
Clonality:	Polyclonal
Immunogen:	Synthetic peptide of human ADAMTS8
Formulation:	pH7.4 PBS, 0.05% NaN <sub>3</sub> , 40% Glycerol
Concentration:	lot specific
Purification:	Antigen affinity purification
Conjugation:	Unconjugated
Storage:	Store at -20°C.
Stability:	1 year
Gene Name:	ADAM metallopeptidase with thrombospondin type 1 motif 8
Database Link:	<a href="#">Entrez Gene 11095 Human Q9UP79</a>



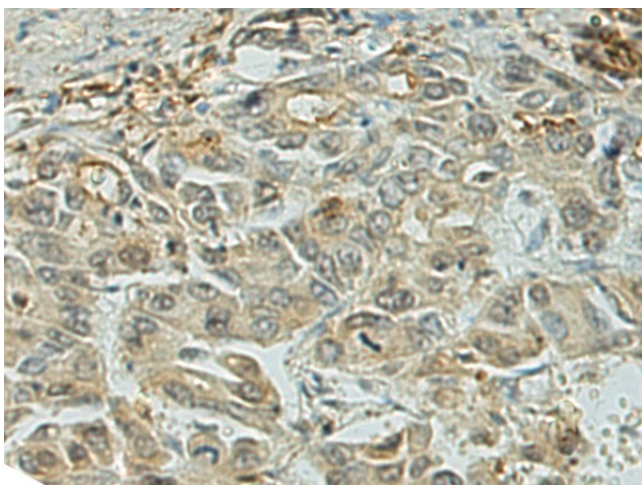
[View online »](#)

**Background:**

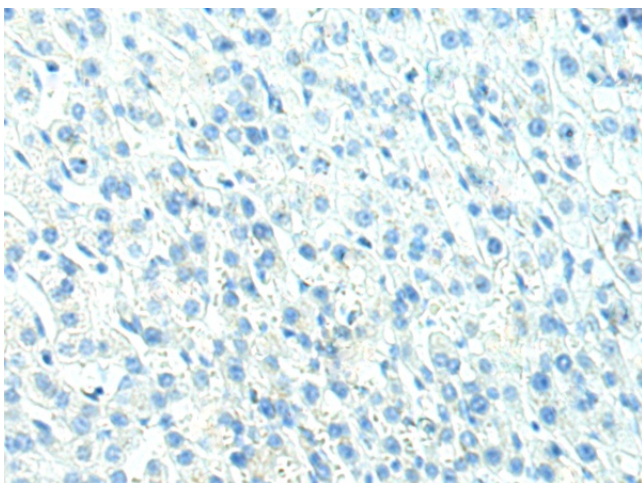
This gene encodes a member of the ADAMTS (a disintegrin and metalloproteinase with thrombospondin motifs) protein family. Members of the family share several distinct protein modules, including a propeptide region, a metalloproteinase domain, a disintegrin-like domain, and a thrombospondin type 1 (TS) motif. Individual members of this family differ in the number of C-terminal TS motifs, and some have unique C-terminal domains. The encoded preproprotein is proteolytically processed to generate the mature enzyme. This enzyme contains two C-terminal TS motifs, and disrupts angiogenesis in vivo. A number of disorders have been mapped in the vicinity of this gene, most notably lung neoplasms. Reduced expression of this gene has been observed in multiple human cancers and this gene has been proposed as a potential tumor suppressor.

**Synonyms:**

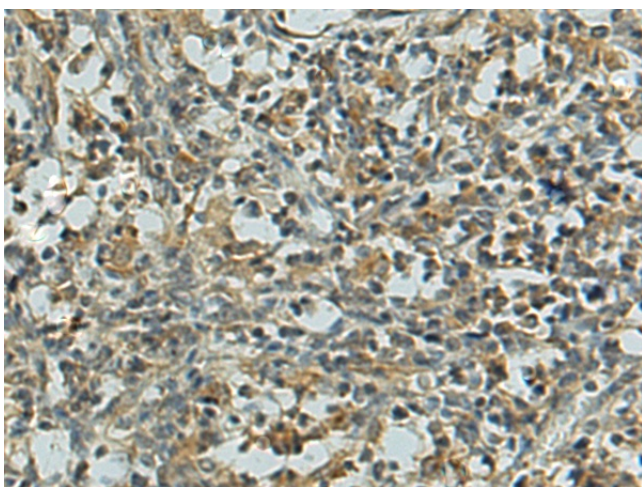
ADAM-TS8; ADAMTS-8; FLJ41712; METH-2; METH-8; METH2

**Product images:**

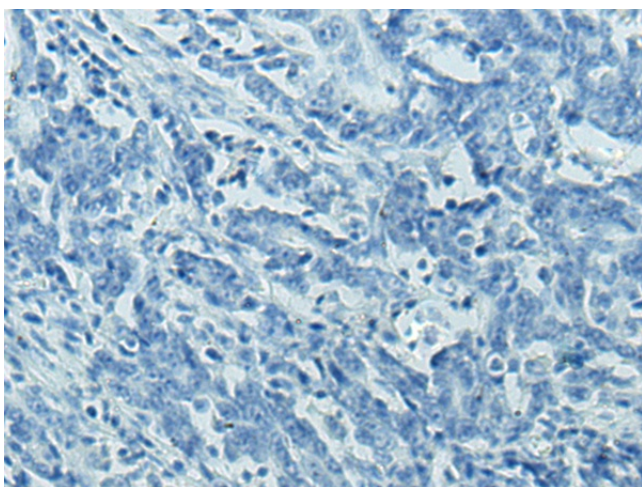
Immunohistochemistry of paraffin-embedded Human liver cancer using TA367532 (ADAMTS8 Antibody) at dilution 1/120 (Original magnification:  $\times 200$ )



Immunohistochemistry of paraffin-embedded Human liver cancer using TA367532 (ADAMTS8 Antibody) at dilution 1/120, treated with synthetic peptide. (Original magnification:  $\times 200$ )



Immunohistochemistry of paraffin-embedded Human gastric cancer using TA367532 (ADAMTS8 Antibody) at dilution 1/120 (Original magnification:  $\times 200$ )



Immunohistochemistry of paraffin-embedded Human gastric cancer using TA367532 (ADAMTS8 Antibody) at dilution 1/120, treated with synthetic peptide. (Original magnification:  $\times 200$ )