

## Product datasheet for **TA367517**

### **P311 (NREP) Rabbit Polyclonal Antibody**

#### **Product data:**

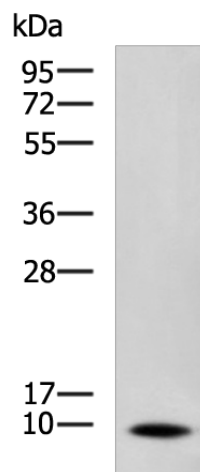
Product Type:	Primary Antibodies
Applications:	IHC, WB
Recommended Dilution:	WB: 500-2000 WB positive control: A172 cell lysate IHC: 50-100 Positive control: Human colorectal cancer Predicted cell location: Cytoplasm
Reactivity:	Human, Mouse, Rat
Host:	Rabbit
Isotype:	IgG
Clonality:	Polyclonal
Immunogen:	Synthetic peptide of human NREP
Formulation:	pH7.4 PBS, 0.05% NaN <sub>3</sub> , 40% Glycerol
Concentration:	lot specific
Purification:	Antigen affinity purification
Conjugation:	Unconjugated
Storage:	Store at -20°C.
Stability:	1 year
Predicted Protein Size:	8 kDa
Gene Name:	neuronal regeneration related protein
Database Link:	<a href="#">Entrez Gene 9315 Human Q16612</a>
Background:	May have roles in neural function. Ectopic expression augments motility of gliomas. Promotes also axonal regeneration. May also have functions in cellular differentiation. Induces differentiation of fibroblast into myofibroblast and myofibroblast ameboid migration. Increases retinoic-acid regulation of lipid-droplet biogenesis. Down-regulates the expression of TGFB1 and TGFB2 but not of TGFB3. May play a role in the regulation of alveolar generation.



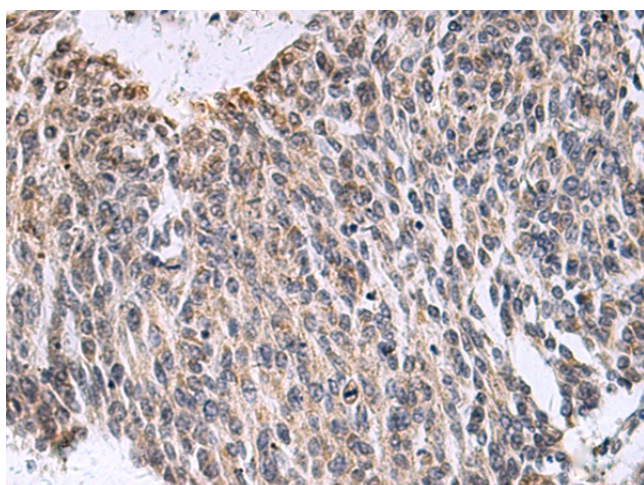
[View online »](#)

Synonyms: AI325076; D0H4S114; Harp; P311; PTZ17; SEZ17

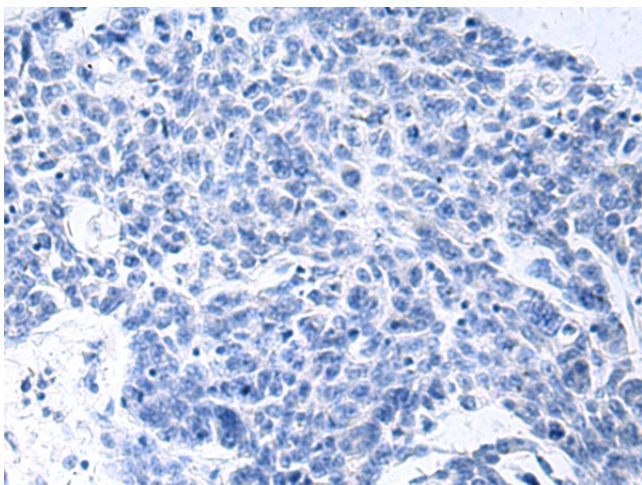
### Product images:



Gel: 8%SDS-PAGE  
Lysate: 40  $\mu$ g  
Lane: A172 cell lysate  
Primary antibody: TA367517 (NREP Antibody) at dilution 1/800  
Secondary antibody: Goat anti rabbit IgG at 1/5000 dilution  
Exposure time: 1 minute



Immunohistochemistry of paraffin-embedded Human colorectal cancer tissue using TA367517 (NREP Antibody) at dilution 1/35 (Original magnification:  $\times$ 200)



Immunohistochemistry of paraffin-embedded Human colorectal cancer tissue using TA367517 (NREP Antibody) at dilution 1/35, treated with synthetic peptide. (Original magnification: ×200)