

## Product datasheet for **TA367514**

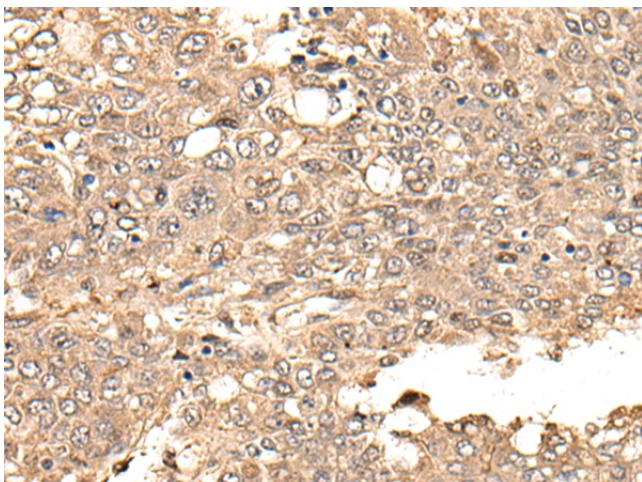
### Nestin (NES) Rabbit Polyclonal Antibody

#### Product data:

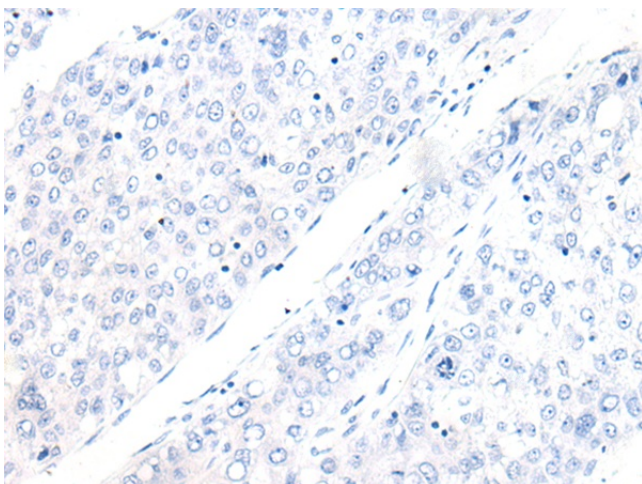
Product Type:	Primary Antibodies
Applications:	IHC
Recommended Dilution:	IHC: 25-100 Positive control: Human liver cancer Predicted cell location: Cytoplasm
Reactivity:	Human
Host:	Rabbit
Isotype:	IgG
Clonality:	Polyclonal
Immunogen:	Synthetic peptide of human NES
Formulation:	pH7.4 PBS, 0.05% NaN <sub>3</sub> , 40% Glycerol
Concentration:	lot specific
Purification:	Antigen affinity purification
Conjugation:	Unconjugated
Storage:	Store at -20°C.
Stability:	1 year
Gene Name:	nestin
Database Link:	<a href="#">Entrez Gene 10763 Human P48681</a>
Background:	This gene encodes a member of the intermediate filament protein family and is expressed primarily in nerve cells.
Synonyms:	FLJ21841; Nbla00170; nestin



[View online »](#)

**Product images:**

Immunohistochemistry of paraffin-embedded Human liver cancer tissue using TA367514 (NES Antibody) at dilution 1/25 (Original magnification: ×200)



Immunohistochemistry of paraffin-embedded Human liver cancer tissue using TA367514 (NES Antibody) at dilution 1/25, treated with synthetic peptide. (Original magnification: ×200)