

## Product datasheet for **TA367499S**

### MAFB Rabbit Polyclonal Antibody

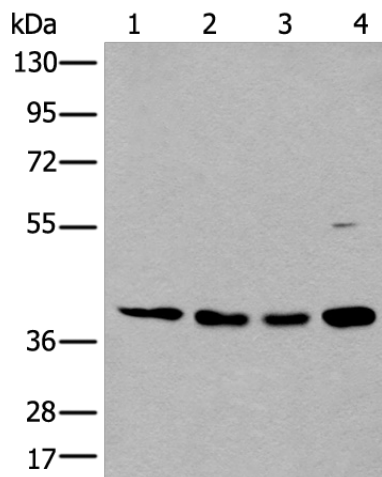
#### Product data:

Product Type:	Primary Antibodies
Applications:	IHC, WB
Recommended Dilution:	WB: 200-1000 WB positive control: HEPG2, HeLa, SKOV3 and Jurkat cell lysates IHC: 25-100 Positive control: Human lung cancer Predicted cell location: Nucleus and Cytoplasm
Reactivity:	Human, Mouse, Rat
Host:	Rabbit
Isotype:	IgG
Clonality:	Polyclonal
Immunogen:	Synthetic peptide of human MAFB
Formulation:	pH7.4 PBS, 0.05% NaN <sub>3</sub> , 40% Glycerol
Purification:	Antigen affinity purification
Conjugation:	Unconjugated
Storage:	Store at -20°C.
Stability:	1 year
Predicted Protein Size:	36 kDa
Gene Name:	MAF bZIP transcription factor B
Database Link:	<a href="#">Entrez Gene 9935 Human Q9Y5Q3</a>
Background:	The protein encoded by this gene is a basic leucine zipper (bZIP) transcription factor that plays an important role in the regulation of lineage-specific hematopoiesis. The encoded nuclear protein represses ETS1-mediated transcription of erythroid-specific genes in myeloid cells. This gene contains no introns.
Synonyms:	KRML; Maf-B; MGC43127; OTTHUMP00000031698

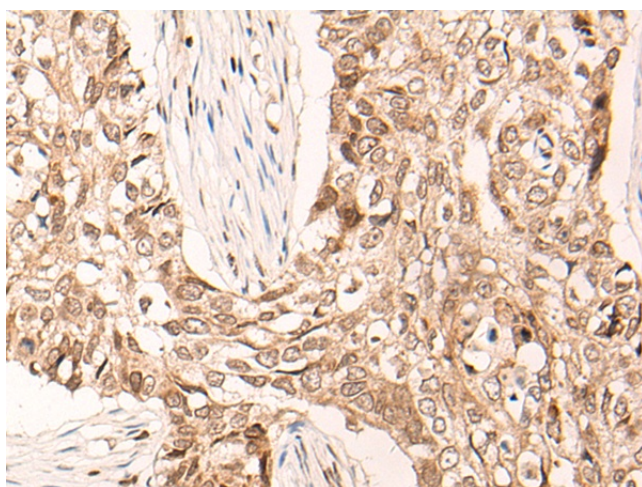


[View online »](#)

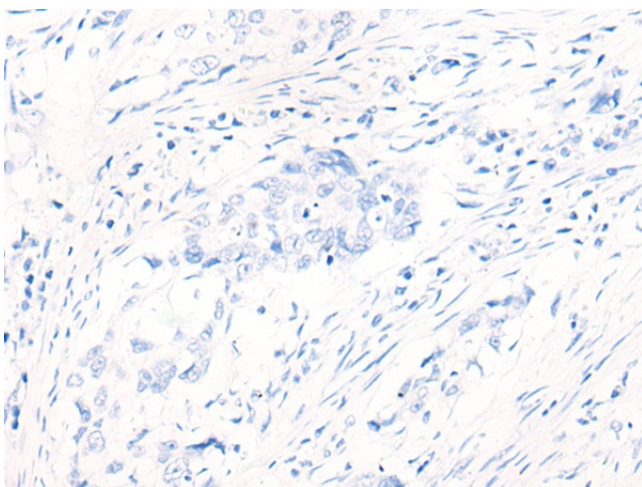
## Product images:



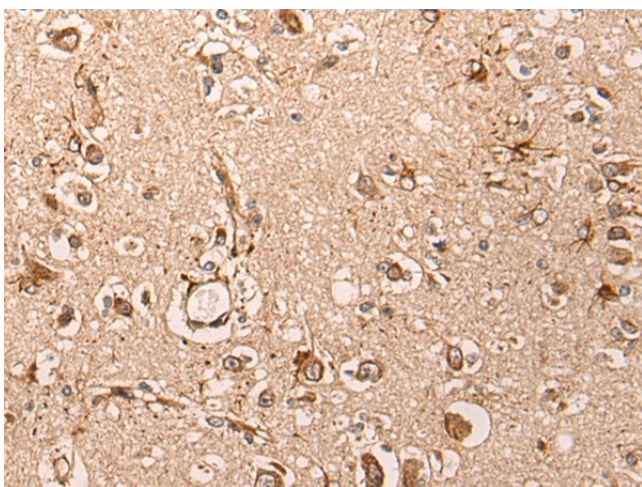
Gel: 8%SDS-PAGE  
Lysate: 40  $\mu$ g  
Lane 1-4: HEPG2  
Hela  
SKOV3 and Jurkat cell lysates  
Primary antibody: [TA367499] (MAFB Antibody) at dilution 1/300  
Secondary antibody: Goat anti rabbit IgG at 1/8000 dilution  
Exposure time: 6 minutes



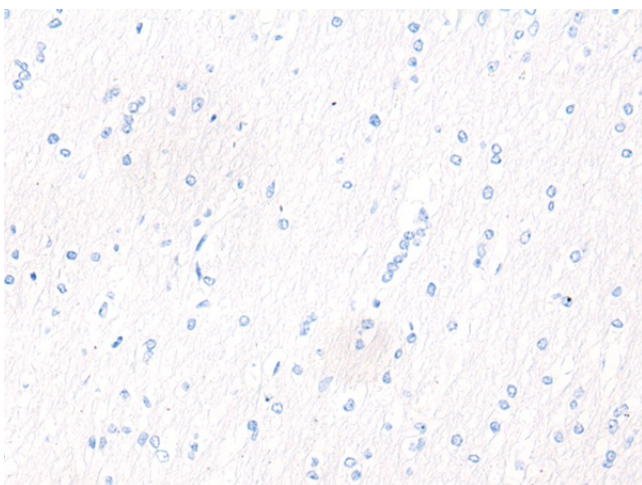
Immunohistochemistry of paraffin-embedded Human lung cancer tissue using [TA367499] (MAFB Antibody) at dilution 1/30 (Original magnification:  $\times 200$ )



Immunohistochemistry of paraffin-embedded Human lung cancer tissue using [TA367499] (MAFB Antibody) at dilution 1/30, treated with synthetic peptide. (Original magnification: ×200)



Immunohistochemistry of paraffin-embedded Human brain tissue using [TA367499] (MAFB Antibody) at dilution 1/30 (Original magnification: ×200)



Immunohistochemistry of paraffin-embedded Human brain tissue using [TA367499] (MAFB Antibody) at dilution 1/30, treated with synthetic peptide. (Original magnification: ×200)