

## Product datasheet for **TA367483S**

### Cyclin G (CCNG1) Rabbit Polyclonal Antibody

#### Product data:

Product Type:	Primary Antibodies
Applications:	IHC, WB
Recommended Dilution:	WB: 500-2000 WB positive control: Jurkat□Hela and 231 cell IHC: 25-100 Positive control: Human gastric cancer Predicted cell location: Nucleus
Reactivity:	Human, Mouse, Rat
Host:	Rabbit
Isotype:	IgG
Clonality:	Polyclonal
Immunogen:	Synthetic peptide of human CCNG1
Formulation:	pH7.4 PBS, 0.05% NaN <sub>3</sub> , 40% Glycerol
Purification:	Antigen affinity purification
Conjugation:	Unconjugated
Storage:	Store at -20°C.
Stability:	1 year
Predicted Protein Size:	34 kDa
Gene Name:	cyclin G1
Database Link:	<a href="#">Entrez Gene 900 Human P51959</a>

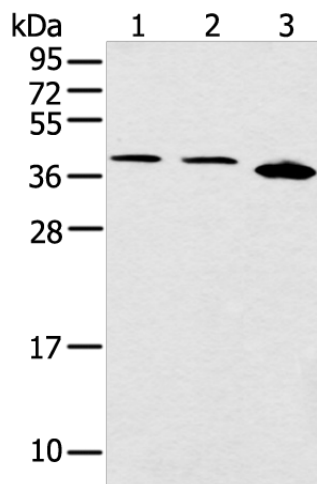
**Background:** The eukaryotic cell cycle is governed by cyclin-dependent protein kinases (CDKs) whose activities are regulated by cyclins and CDK inhibitors. The protein encoded by this gene is a member of the cyclin family and contains the cyclin box. The encoded protein lacks the protein destabilizing (PEST) sequence that is present in other family members. Transcriptional activation of this gene can be induced by tumor protein p53. Two transcript variants encoding the same protein have been identified for this gene.

**Synonyms:** CCNG; CYCG1; Cyclin-G

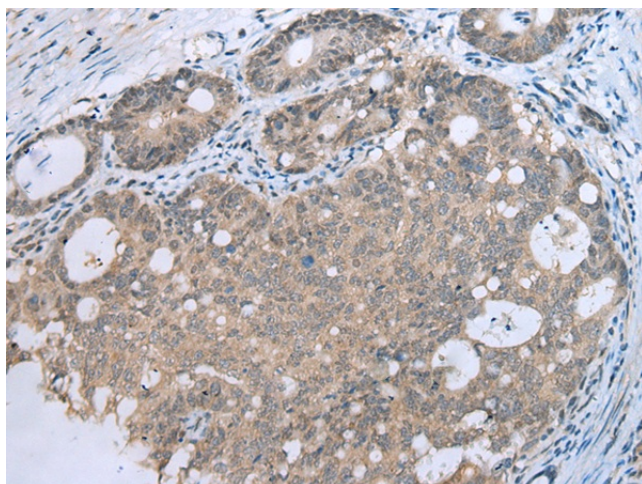


[View online »](#)

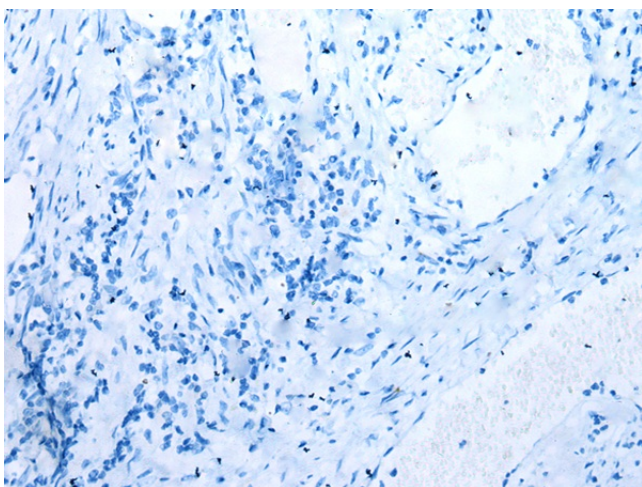
Product images:



Gel: 12%SDS-PAGE  
 Lysate: 40 µg  
 Lane 1-3: Jurkat  
 Hela and 231 cell  
 Primary antibody: [TA367483] (CCNG1 Antibody)  
 at dilution 1/400  
 Secondary antibody: Goat anti rabbit IgG at  
 1/8000 dilution  
 Exposure time: 1 minute



Immunohistochemistry of paraffin-embedded  
 Human gastric cancer tissue using [TA367483]  
 (CCNG1 Antibody) at dilution 1/30 (Original  
 magnification: ×200)



Immunohistochemistry of paraffin-embedded Human gastric cancer tissue using [TA367483] (CCNG1 Antibody) at dilution 1/30, treated with synthetic peptide. (Original magnification:  $\times 200$ )