

## Product datasheet for **TA367474**

### **BAG2 Rabbit Polyclonal Antibody**

#### **Product data:**

|                         |  |
|-------------------------|--|
| Product Type:           | Primary Antibodies   |
| Applications:           | IHC, WB  |
| Recommended Dilution:   | WB: 500-2000<br>WB positive control: A549□A431, Hela□Jurkat and HEPG2 cell<br>IHC: 20-100<br>Positive control: Human prostate cancer<br>Predicted cell location: Cytoplasm |
| Reactivity:             | Human  |
| Host:                   | Rabbit   |
| Isotype:                | IgG  |
| Clonality:              | Polyclonal   |
| Immunogen:              | Synthetic peptide of human BAG2  |
| Formulation:            | pH7.4 PBS, 0.05% NaN <sub>3</sub> , 40% Glycerol   |
| Concentration:          | lot specific   |
| Purification:           | Antigen affinity purification  |
| Conjugation:            | Unconjugated   |
| Storage:                | Store at -20°C.  |
| Stability:              | 1 year   |
| Predicted Protein Size: | 24 kDa   |
| Gene Name:              | BCL2 associated athanogene 2   |
| Database Link:          | <a href="#">Entrez Gene 9532 Human O95816</a>  |



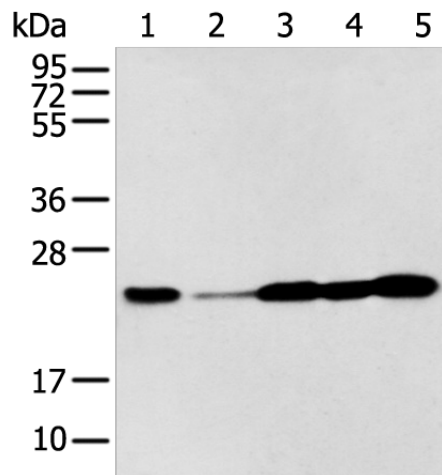
[View online »](#)

**Background:**

BAG proteins compete with Hip for binding to the Hsc70/Hsp70 ATPase domain and promote substrate release. All the BAG proteins have an approximately 45-amino acid BAG domain near the C terminus but differ markedly in their N-terminal regions. The predicted BAG2 protein contains 211 amino acids. The BAG domains of BAG1, BAG2, and BAG3 interact specifically with the Hsc70 ATPase domain in vitro and in mammalian cells. All 3 proteins bind with high affinity to the ATPase domain of Hsc70 and inhibit its chaperone activity in a Hip-repressible manner.

**Synonyms:**

BAG-2; dj41711.2; KIAA0576; MGC149462

**Product images:**


Gel: 12%SDS-PAGE

Lysate: 40 µg

Lane 1-5: A549

A431

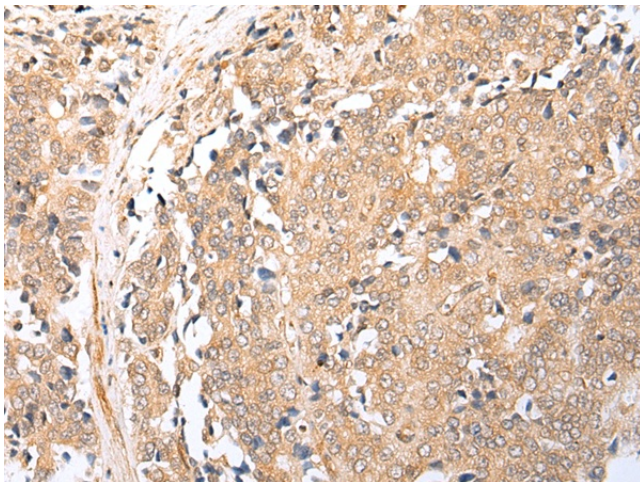
Hela

Jurkat and HEPG2 cell

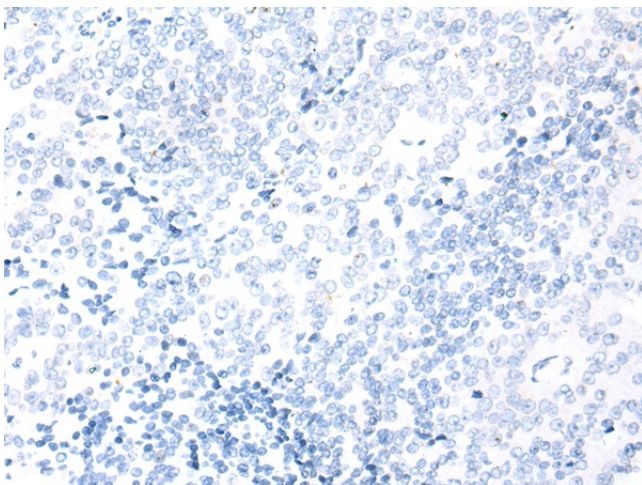
Primary antibody: TA367474 (BAG2 Antibody) at dilution 1/300

Secondary antibody: Goat anti rabbit IgG at 1/8000 dilution

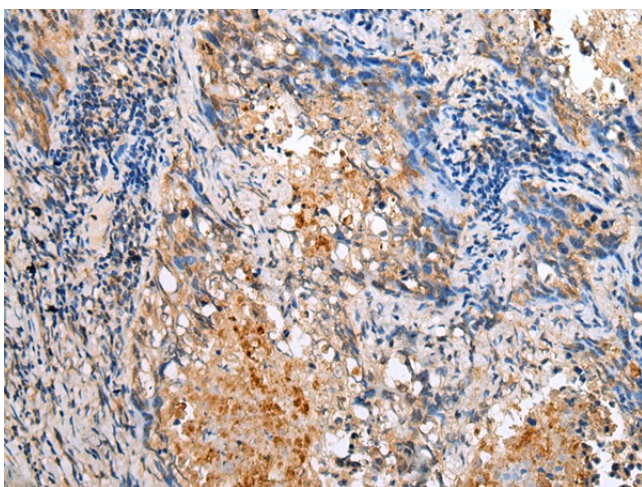
Exposure time: 3 seconds



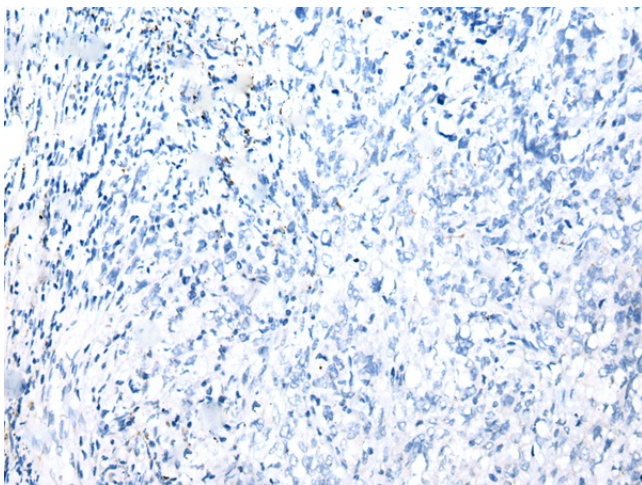
Immunohistochemistry of paraffin-embedded Human prostate cancer tissue using TA367474 (BAG2 Antibody) at dilution 1/25 (Original magnification: ×200)



Immunohistochemistry of paraffin-embedded Human prostate cancer tissue using TA367474 (BAG2 Antibody) at dilution 1/25, treated with synthetic peptide. (Original magnification: x200)



Immunohistochemistry of paraffin-embedded Human lung cancer tissue using TA367474 (BAG2 Antibody) at dilution 1/25 (Original magnification: x200)



Immunohistochemistry of paraffin-embedded Human lung cancer tissue using TA367474 (BAG2 Antibody) at dilution 1/25, treated with synthetic peptide. (Original magnification: x200)