

Product datasheet for **TA367469S**

DR4 (TNFRSF10A) Rabbit Polyclonal Antibody

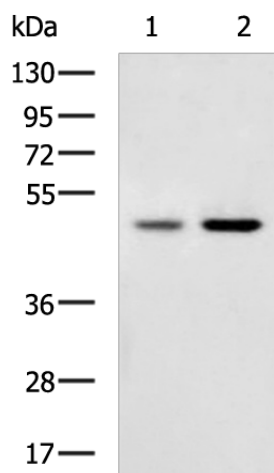
Product data:

Product Type:	Primary Antibodies
Applications:	IHC, WB
Recommended Dilution:	WB: 500-2000 WB positive control: PC-3 and LOVO cell lysates IHC: 25-50 Positive control: Human colorectal cancer Predicted cell location: Cytoplasm
Reactivity:	Human
Host:	Rabbit
Isotype:	IgG
Clonality:	Polyclonal
Immunogen:	Synthetic peptide of human TNFRSF10A
Formulation:	pH7.4 PBS, 0.05% NaN ₃ , 40% Glycerol
Purification:	Antigen affinity purification
Conjugation:	Unconjugated
Storage:	Store at -20°C.
Stability:	1 year
Predicted Protein Size:	50 kDa
Gene Name:	tumor necrosis factor receptor superfamily member 10a
Database Link:	Entrez Gene 8797 Human O00220
Background:	The protein encoded by this gene is a member of the TNF-receptor superfamily. This receptor is activated by tumor necrosis factor-related apoptosis inducing ligand (TNFSF10/TRAIL), and thus transduces cell death signal and induces cell apoptosis. Studies with FADD-deficient mice suggested that FADD, a death domain containing adaptor protein, is required for the apoptosis mediated by this protein.
Synonyms:	APO2; CD261; DR4; MGC9365; TRAIL-R1; TRAILR-1; TRAILR1

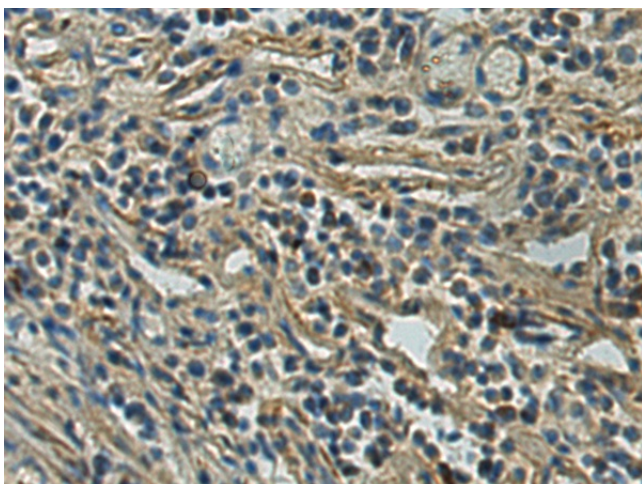


[View online »](#)

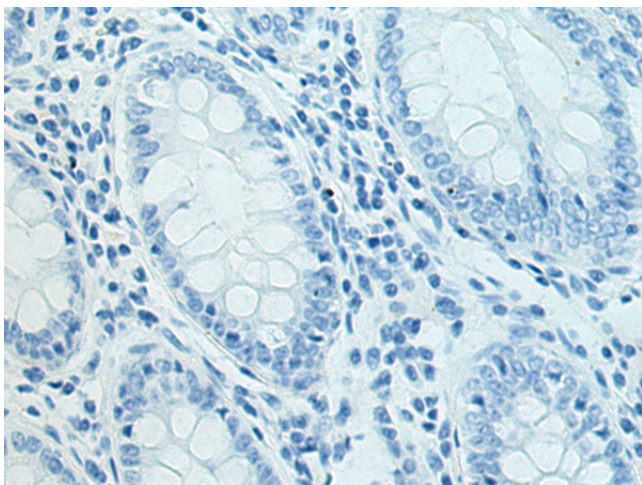
Product images:



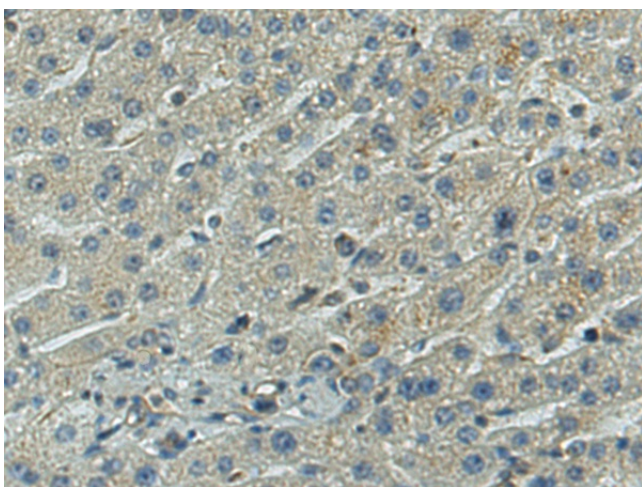
Gel: 8%SDS-PAGE
Lysate: 40 μ g
Lane 1-2: PC-3 and LOVO cell lysates
Primary antibody: [TA367469] (TNFRSF10A Antibody) at dilution 1/500
Secondary antibody: Goat anti rabbit IgG at 1/5000 dilution
Exposure time: 1 minute



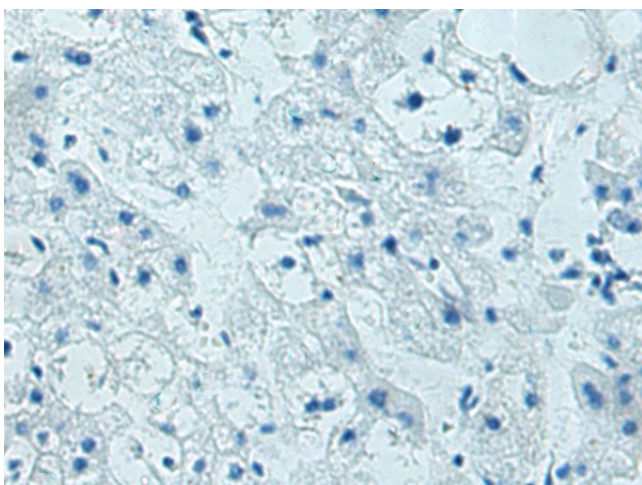
Immunohistochemistry of paraffin-embedded Human colorectal cancer tissue using [TA367469] (TNFRSF10A Antibody) at dilution 1/20 (Original magnification: $\times 200$)



Immunohistochemistry of paraffin-embedded Human colorectal cancer tissue using [TA367469] (TNFRSF10A Antibody) at dilution 1/20, treated with synthetic peptide. (Original magnification: $\times 200$)



Immunohistochemistry of paraffin-embedded Human liver cancer tissue using [TA367469] (TNFRSF10A Antibody) at dilution 1/20 (Original magnification: $\times 200$)



Immunohistochemistry of paraffin-embedded Human liver cancer tissue using [TA367469] (TNFRSF10A Antibody) at dilution 1/20, treated with synthetic peptide. (Original magnification: $\times 200$)