

## Product datasheet for **TA367466**

### Persephin receptor (GFRA4) Rabbit Polyclonal Antibody

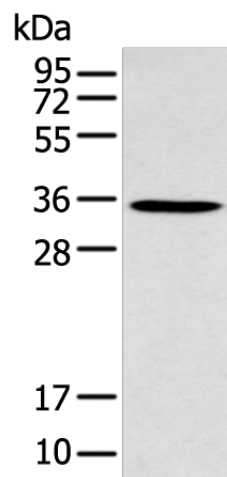
#### Product data:

Product Type:	Primary Antibodies
Applications:	IHC, WB
Recommended Dilution:	WB: 200-1000 WB positive control: Jurkat cell IHC: 20-100 Positive control: Human breast cancer Predicted cell location: Secreted or Cell membrane
Reactivity:	Human
Host:	Rabbit
Isotype:	IgG
Clonality:	Polyclonal
Immunogen:	Synthetic peptide (DPEHSLQVSSTGR) of human GFRA4
Formulation:	pH7.4 PBS, 0.05% NaN <sub>3</sub> , 40% Glycerol
Concentration:	lot specific
Purification:	Antigen affinity purification
Conjugation:	Unconjugated
Storage:	Store at -20°C.
Stability:	1 year
Predicted Protein Size:	32 kDa
Gene Name:	GDNF family receptor alpha 4
Database Link:	<a href="#">Entrez Gene 64096 Human Q9GZZ7</a>
Background:	The protein encoded by this gene is a member of the GDNF receptor family. It is a glycosylphosphatidylinositol(GPI)-linked cell surface receptor for persephin, and mediates activation of the RET tyrosine kinase receptor. This gene is a candidate gene for RET-associated diseases. Alternatively spliced transcript variants encoding different isoforms have been described for this gene.
Synonyms:	GFR-alpha-4

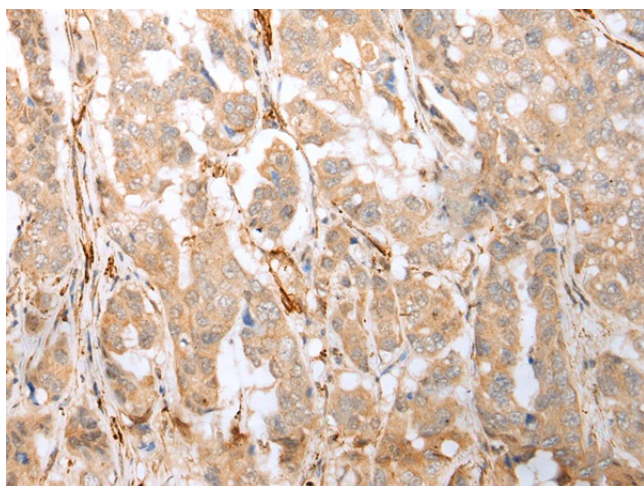


[View online »](#)

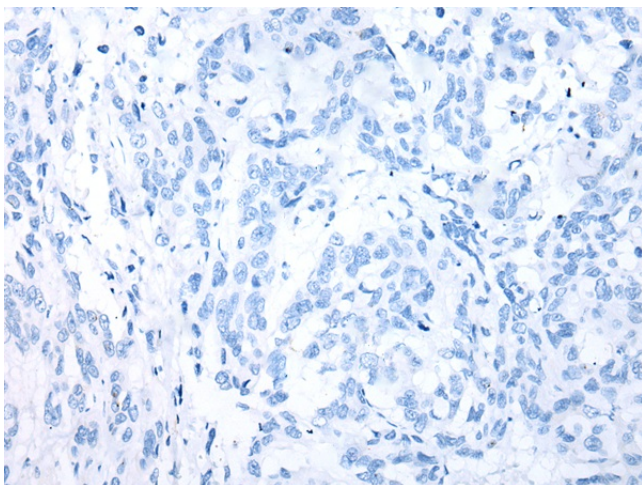
## Product images:



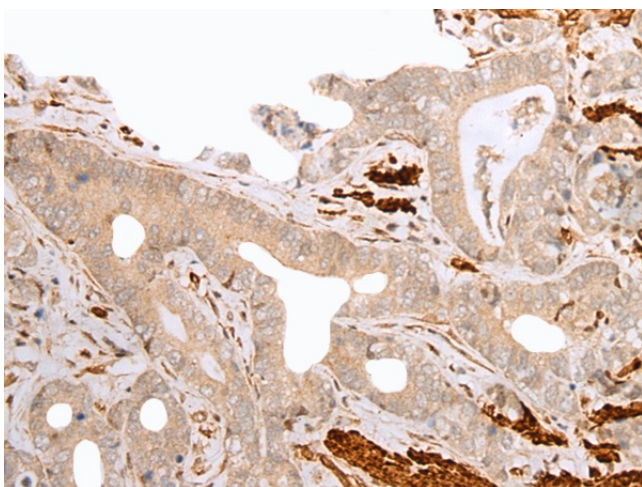
Gel: 12%SDS-PAGE  
Lysate: 40 µg  
Lane: Jurkat cell  
Primary antibody: TA367466 (GFRA4 Antibody) at dilution 1/300  
Secondary antibody: Goat anti rabbit IgG at 1/8000 dilution  
Exposure time: 30 seconds



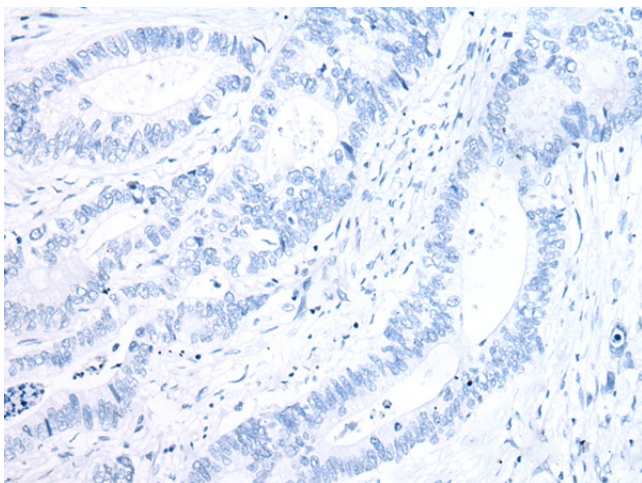
Immunohistochemistry of paraffin-embedded Human breast cancer tissue using TA367466 (GFRA4 Antibody) at dilution 1/20 (Original magnification: ×200)



Immunohistochemistry of paraffin-embedded Human breast cancer tissue using TA367466 (GFRA4 Antibody) at dilution 1/20, treated with synthetic peptide. (Original magnification: x200)



Immunohistochemistry of paraffin-embedded Human gastric cancer tissue using TA367466 (GFRA4 Antibody) at dilution 1/20 (Original magnification: x200)



Immunohistochemistry of paraffin-embedded Human gastric cancer tissue using TA367466 (GFRA4 Antibody) at dilution 1/20, treated with synthetic peptide. (Original magnification: x200)