

## Product datasheet for **TA367452**

### ECM1 Rabbit Polyclonal Antibody

#### Product data:

Product Type:	Primary Antibodies
Applications:	IHC, WB
Recommended Dilution:	WB: 500-2000 WB positive control: MCF7 cell lysate IHC: 50-100 Positive control: Human breast cancer Predicted cell location: Cytoplasm
Reactivity:	Human
Host:	Rabbit
Isotype:	IgG
Clonality:	Polyclonal
Immunogen:	Synthetic peptide of human ECM1
Formulation:	pH7.4 PBS, 0.05% NaN <sub>3</sub> , 40% Glycerol
Concentration:	lot specific
Purification:	Antigen affinity purification
Conjugation:	Unconjugated
Storage:	Store at -20°C.
Stability:	1 year
Predicted Protein Size:	61 kDa
Gene Name:	extracellular matrix protein 1
Database Link:	<a href="#">Entrez Gene 1893 Human Q16610</a>



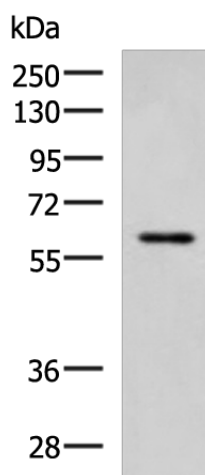
[View online »](#)

**Background:**

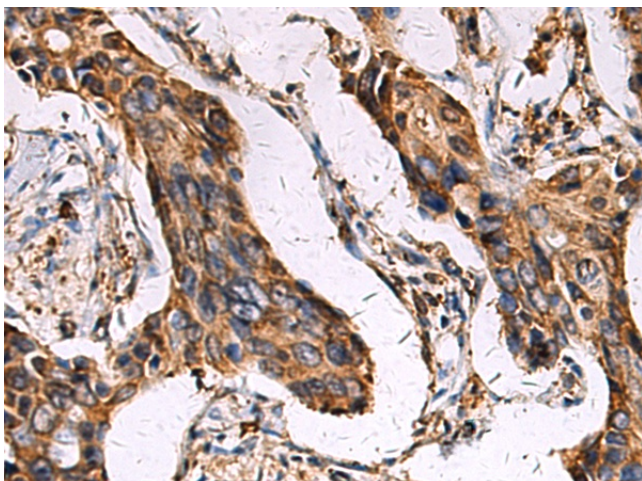
This gene encodes a soluble protein that is involved in endochondral bone formation, angiogenesis, and tumor biology. It also interacts with a variety of extracellular and structural proteins, contributing to the maintenance of skin integrity and homeostasis. Mutations in this gene are associated with lipid proteinosis disorder (also known as hyalinosis cutis et mucosae or Urbach-Wiethe disease) that is characterized by generalized thickening of skin, mucosae and certain viscera. Alternatively spliced transcript variants encoding distinct isoforms have been described for this gene.

**Synonyms:**

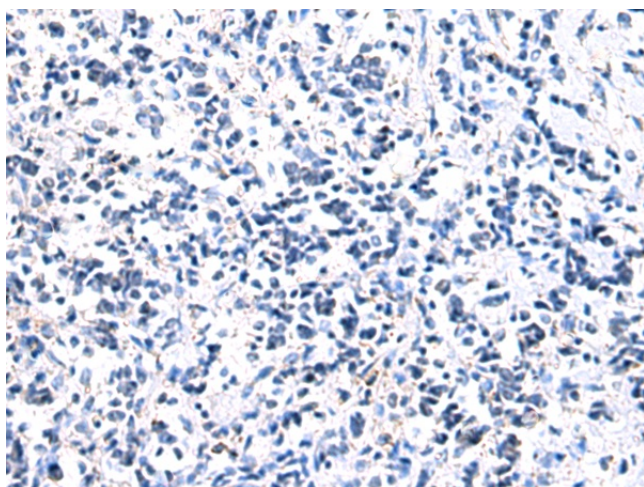
ECM1

**Product images:**

Gel: 8%SDS-PAGE  
Lysate: 40 µg  
Lane: MCF7 cell lysate  
Primary antibody: TA367452 (ECM1 Antibody) at dilution 1/1000  
Secondary antibody: Goat anti rabbit IgG at 1/5000 dilution  
Exposure time: 3 minutes



Immunohistochemistry of paraffin-embedded Human breast cancer tissue using TA367452 (ECM1 Antibody) at dilution 1/45 (Original magnification: ×200)



Immunohistochemistry of paraffin-embedded Human breast cancer tissue using TA367452 (ECM1 Antibody) at dilution 1/45, treated with synthetic peptide. (Original magnification:  $\times 200$ )