

Product datasheet for **TA367449**

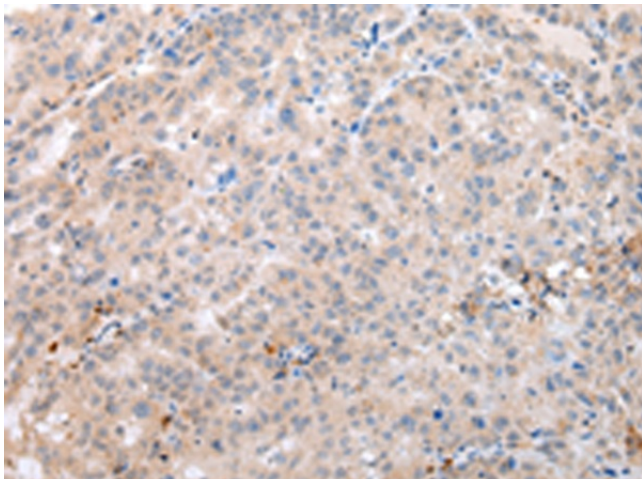
DEFB112 Rabbit Polyclonal Antibody

Product data:

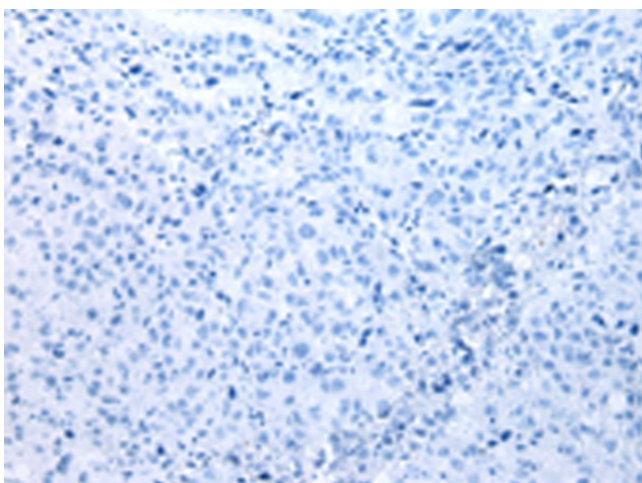
Product Type:	Primary Antibodies
Applications:	IHC
Recommended Dilution:	IHC: 20-100 Positive control: Human ovarian cancer Predicted cell location: Cytoplasm
Reactivity:	Human
Host:	Rabbit
Isotype:	IgG
Clonality:	Polyclonal
Immunogen:	Synthetic peptide of human DEFB112
Formulation:	pH7.4 PBS, 0.05% NaN ₃ , 40% Glycerol
Concentration:	lot specific
Purification:	Antigen affinity purification
Conjugation:	Unconjugated
Storage:	Store at -20°C.
Stability:	1 year
Gene Name:	defensin beta 112
Database Link:	Entrez Gene 245915 Human Q30KQ8
Background:	Defensins form a family of antimicrobial and cytotoxic peptides made by neutrophils. Defensins are short, processed peptide molecules that are classified by structure into three groups: alpha-defensins, beta-defensins and theta-defensins. All beta-defensin genes are densely clustered in four to five syntenic chromosomal regions.
Synonyms:	DEFB-12; DEFB12



[View online »](#)

Product images:

Immunohistochemistry of paraffin-embedded Human ovarian cancer tissue using TA367449 (DEFB112 Antibody) at dilution 1/20 (Original magnification: $\times 200$)



Immunohistochemistry of paraffin-embedded Human ovarian cancer tissue using TA367449 (DEFB112 Antibody) at dilution 1/20, treated with synthetic peptide. (Original magnification: $\times 200$)