

Product datasheet for **TA367442**

CLEC9A Rabbit Polyclonal Antibody

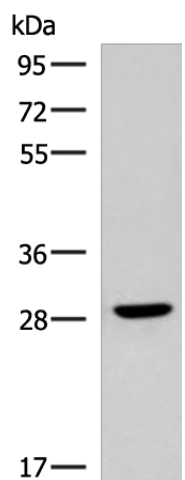
Product data:

Product Type:	Primary Antibodies
Applications:	WB
Recommended Dilution:	WB: 500-2000 WB positive control: Human fetal brain tissue lysate
Reactivity:	Human
Host:	Rabbit
Isotype:	IgG
Clonality:	Polyclonal
Immunogen:	Synthetic peptide of human CLEC9A
Formulation:	pH7.4 PBS, 0.05% NaN ₃ , 40% Glycerol
Concentration:	lot specific
Purification:	Antigen affinity purification
Conjugation:	Unconjugated
Storage:	Store at -20°C.
Stability:	1 year
Predicted Protein Size:	27 kDa
Gene Name:	C-type lectin domain family 9 member A
Database Link:	Entrez Gene 283420 Human Q6UXN8
Background:	CLEC9A is a group V C-type lectin-like receptor (CTLR) that functions as an activation receptor and is expressed on myeloid lineage cells. Flow cytometric, Western blot, and deglycosylation analyses showed surface expression of a glycosylated CLEC9A dimer of 40 and 45 kD under reducing conditions. The deglycosylated dimer was approximately 30 and 35 kD. RT-PCR detected CLEC9A expression in most human tissues examined, with highest levels in brain, thymus, and spleen.
Synonyms:	DNGR1; HEEE9341; UNQ9341



[View online »](#)

Product images:



Gel: 8%SDS-PAGE
Lysate: 40 μ g
Lane: Human fetal brain tissue lysate
Primary antibody: TA367442 (CLEC9A Antibody)
at dilution 1/800
Secondary antibody: Goat anti rabbit IgG at
1/5000 dilution
Exposure time: 20 seconds