

## Product datasheet for **TA367438**

### CLDN25 Rabbit Polyclonal Antibody

#### Product data:

Product Type:	Primary Antibodies
Applications:	IHC, WB
Recommended Dilution:	WB: 500-2000 WB positive control: Human normal lung tissue IHC: 25-100 Positive control: Human ovarian cancer Predicted cell location: Cytoplasm
Reactivity:	Human
Host:	Rabbit
Isotype:	IgG
Clonality:	Polyclonal
Immunogen:	Synthetic peptide of human CLDN25
Formulation:	pH7.4 PBS, 0.05% NaN <sub>3</sub> , 40% Glycerol
Concentration:	lot specific
Purification:	Antigen affinity purification
Conjugation:	Unconjugated
Storage:	Store at -20°C.
Stability:	1 year
Predicted Protein Size:	25 kDa
Gene Name:	claudin 25
Database Link:	<a href="#">Entrez Gene 644672 Human C9JDP6</a>

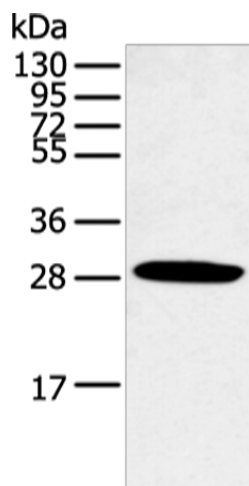
**Background:** This gene encodes a member of the claudin family. Claudins are integral membrane proteins and components of tight junction strands. Tight junction strands serve as a physical barrier to prevent solutes and water from passing freely through the paracellular space between epithelial or endothelial cell sheets, and also play critical roles in maintaining cell polarity and signal transductions.

**Synonyms:** 1110019C08Rik; AA407103; AI849195; AW489850; Cldnd1

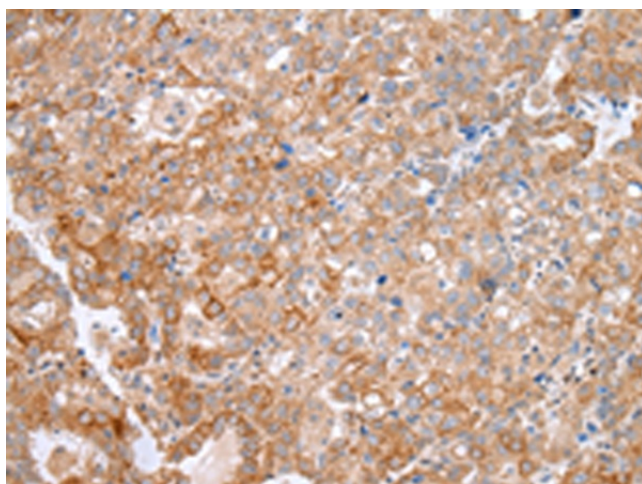


[View online »](#)

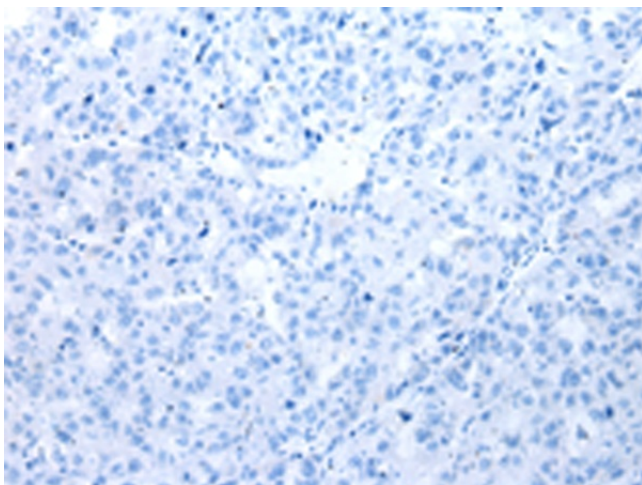
## Product images:



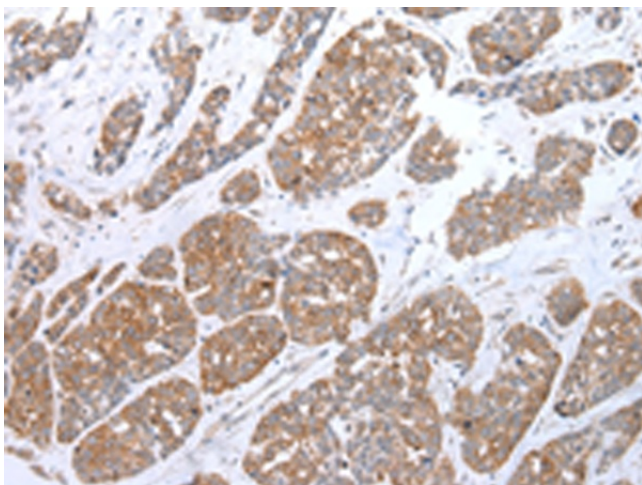
Gel: 12%SDS-PAGE  
Lysate: 40  $\mu$ g  
Lane: Human normal lung tissue  
Primary antibody: TA367438 (CLDN25 Antibody)  
at dilution 1/250  
Secondary antibody: Goat anti rabbit IgG at  
1/8000 dilution  
Exposure time: 10 seconds



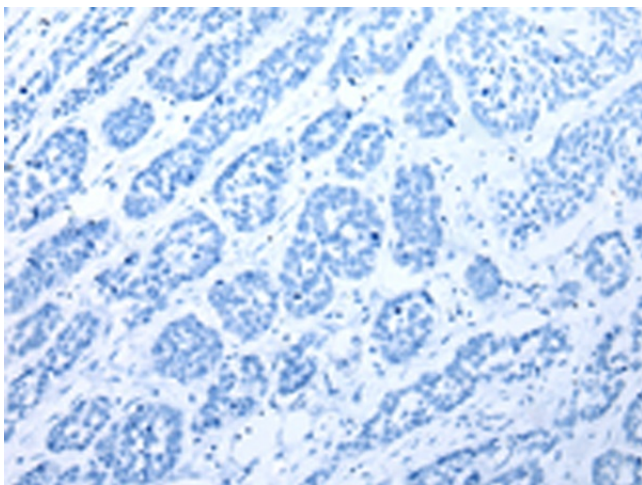
Immunohistochemistry of paraffin-embedded  
Human ovarian cancer tissue using TA367438  
(CLDN25 Antibody) at dilution 1/20 (Original  
magnification:  $\times$ 200)



Immunohistochemistry of paraffin-embedded Human ovarian cancer tissue using TA367438 (CLDN25 Antibody) at dilution 1/20, treated with synthetic peptide. (Original magnification:  $\times 200$ )



Immunohistochemistry of paraffin-embedded Human esophagus cancer tissue using TA367438 (CLDN25 Antibody) at dilution 1/20 (Original magnification:  $\times 200$ )



Immunohistochemistry of paraffin-embedded Human esophagus cancer tissue using TA367438 (CLDN25 Antibody) at dilution 1/20, treated with synthetic peptide. (Original magnification:  $\times 200$ )