

Product datasheet for **TA367433S**

COX7C Rabbit Polyclonal Antibody

Product data:

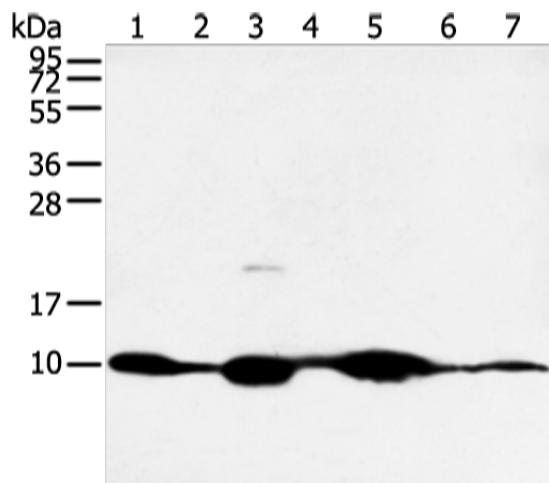
Product Type:	Primary Antibodies
Applications:	IHC, WB
Recommended Dilution:	WB: 500-2000 WB positive control: Mouse muscle and human fetal muscle tissue, mouse heart tissue and PC3 cell, mouse kidney and small intestines tissue, 231 cell IHC: 30-150 Positive control: Human breast cancer Predicted cell location: Cytoplasm or Cell membrane
Reactivity:	Human, Mouse, Rat
Host:	Rabbit
Isotype:	IgG
Clonality:	Polyclonal
Immunogen:	Synthetic peptide of human COX7C
Formulation:	pH7.4 PBS, 0.05% NaN ₃ , 40% Glycerol
Purification:	Antigen affinity purification
Conjugation:	Unconjugated
Storage:	Store at -20°C.
Stability:	1 year
Predicted Protein Size:	7 kDa
Gene Name:	cytochrome c oxidase subunit 7C
Database Link:	Entrez Gene 1350 Human P15954
Background:	Cytochrome c oxidase (COX), the terminal component of the mitochondrial respiratory chain, catalyzes the electron transfer from reduced cytochrome c to oxygen. This component is a heteromeric complex consisting of 3 catalytic subunits encoded by mitochondrial genes and multiple structural subunits encoded by nuclear genes. The mitochondrially-encoded subunits function in electron transfer, and the nuclear-encoded subunits may function in the regulation and assembly of the complex.



[View online »](#)

Synonyms: COX7C

Product images:



Gel: 12%SDS-PAGE

Lysate: 40 μ g

Lane 1-7: Mouse muscle and human fetal muscle tissue

mouse heart tissue and PC3 cell

mouse kidney and small intestines tissue

231 cell

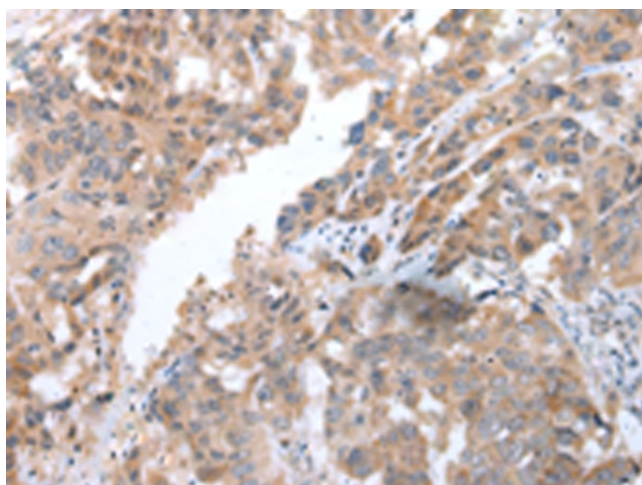
Primary antibody: [TA367433] (COX7C Antibody)

at dilution 1/300

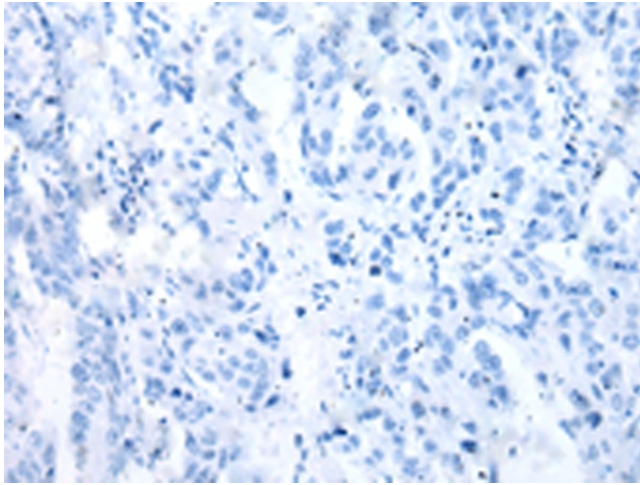
Secondary antibody: Goat anti rabbit IgG at

1/8000 dilution

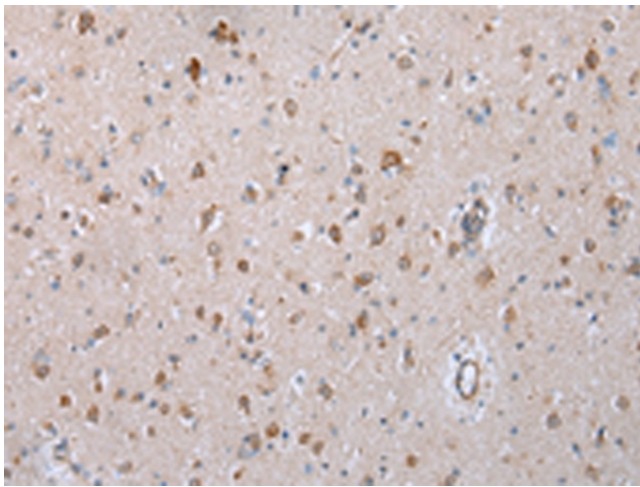
Exposure time: 5 minutes



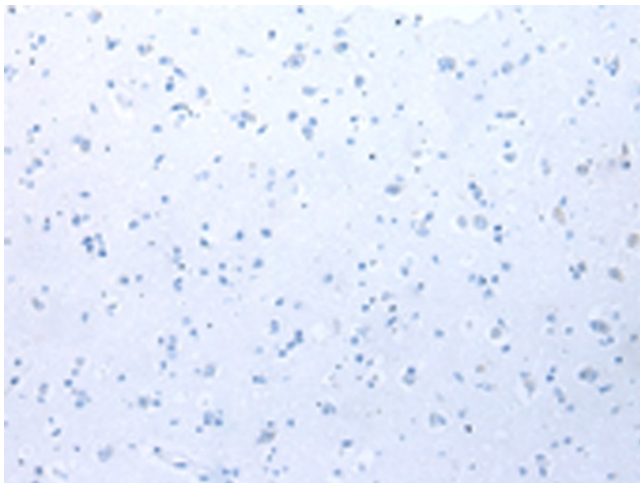
Immunohistochemistry of paraffin-embedded Human breast cancer tissue using [TA367433] (COX7C Antibody) at dilution 1/40 (Original magnification: $\times 200$)



Immunohistochemistry of paraffin-embedded Human breast cancer tissue using [TA367433] (COX7C Antibody) at dilution 1/40, treated with synthetic peptide. (Original magnification: $\times 200$)



Immunohistochemistry of paraffin-embedded Human brain tissue using [TA367433] (COX7C Antibody) at dilution 1/40 (Original magnification: $\times 200$)



Immunohistochemistry of paraffin-embedded Human brain tissue using [TA367433] (COX7C Antibody) at dilution 1/40, treated with synthetic peptide. (Original magnification: $\times 200$)