

Product datasheet for **TA367428**

ACVRL1 Rabbit Polyclonal Antibody

Product data:

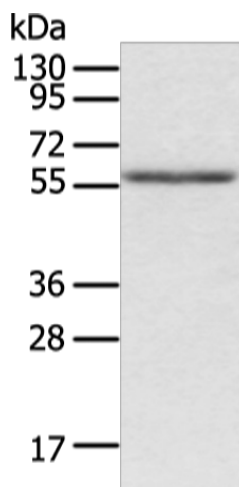
Product Type:	Primary Antibodies
Applications:	IHC, WB
Recommended Dilution:	WB: 200-1000 WB positive control: Human placenta tissue IHC: 30-150 Positive control: Human breast cancer Predicted cell location: Cytoplasm or Cell membrane
Reactivity:	Human
Host:	Rabbit
Isotype:	IgG
Clonality:	Polyclonal
Immunogen:	Synthetic peptide of human ACVRL1
Formulation:	pH7.4 PBS, 0.05% NaN ₃ , 40% Glycerol
Concentration:	lot specific
Purification:	Antigen affinity purification
Conjugation:	Unconjugated
Storage:	Store at -20°C.
Stability:	1 year
Predicted Protein Size:	56 kDa
Gene Name:	activin A receptor like type 1
Database Link:	Entrez Gene 94 Human P37023
Background:	This gene encodes a type I cell-surface receptor for the TGF-beta superfamily of ligands. It shares with other type I receptors a high degree of similarity in serine-threonine kinase subdomains, a glycine- and serine-rich region (called the GS domain) preceding the kinase domain, and a short C-terminal tail. The encoded protein, sometimes termed ALK1, shares similar domain structures with other closely related ALK or activin receptor-like kinase proteins that form a subfamily of receptor serine/threonine kinases.



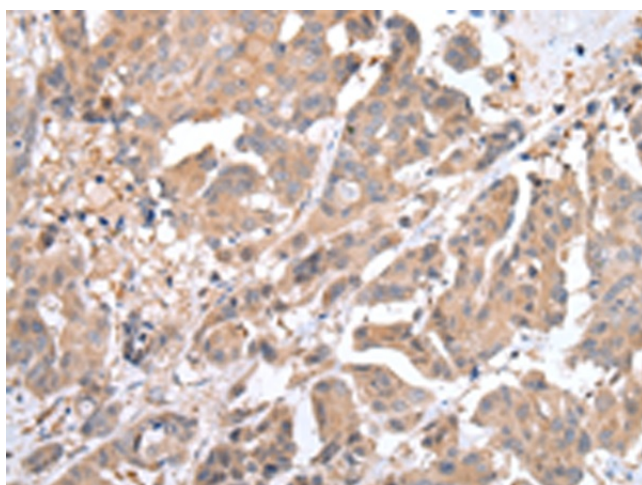
[View online »](#)

Synonyms: ACVRLK1; ALK-1; ALK1; HHT; HHT2; ORW2; SKR3; TSR-I

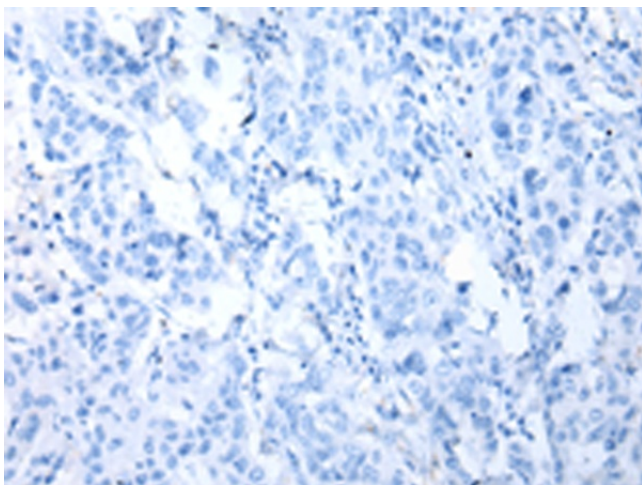
Product images:



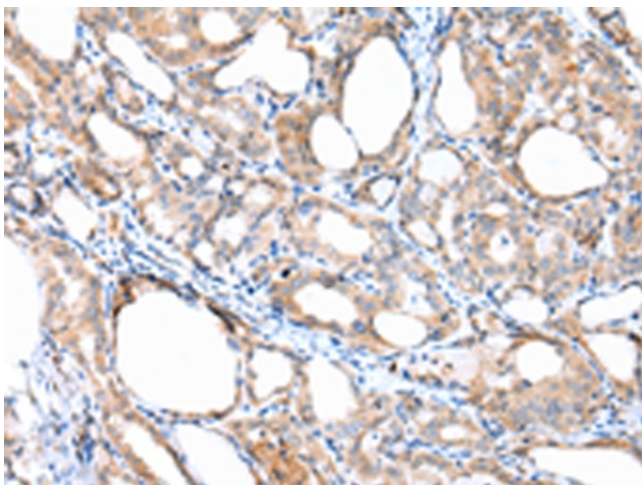
Gel: 8%SDS-PAGE
Lysate: 40 μ g
Lane: Human placenta tissue
Primary antibody: TA367428 (ACVRL1 Antibody)
at dilution 1/750
Secondary antibody: Goat anti rabbit IgG at
1/8000 dilution
Exposure time: 1 minute



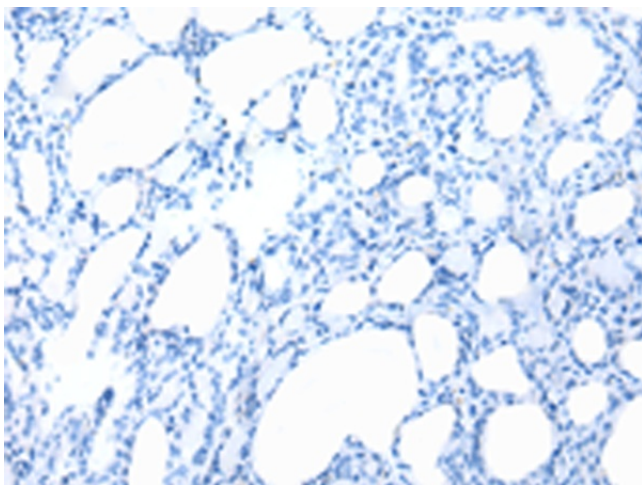
Immunohistochemistry of paraffin-embedded
Human breast cancer tissue using TA367428
(ACVRL1 Antibody) at dilution 1/45 (Original
magnification: \times 200)



Immunohistochemistry of paraffin-embedded Human breast cancer tissue using TA367428 (ACVRL1 Antibody) at dilution 1/45, treated with synthetic peptide. (Original magnification: ×200)



Immunohistochemistry of paraffin-embedded Human thyroid cancer tissue using TA367428 (ACVRL1 Antibody) at dilution 1/45 (Original magnification: ×200)



Immunohistochemistry of paraffin-embedded Human thyroid cancer tissue using TA367428 (ACVRL1 Antibody) at dilution 1/45, treated with synthetic peptide. (Original magnification: ×200)