

## Product datasheet for **TA367423**

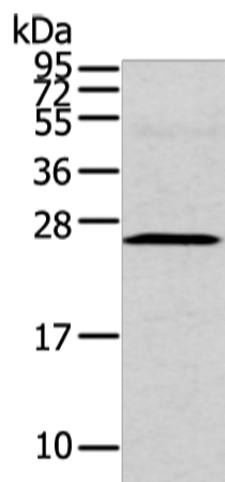
### CFC1 Rabbit Polyclonal Antibody

#### Product data:

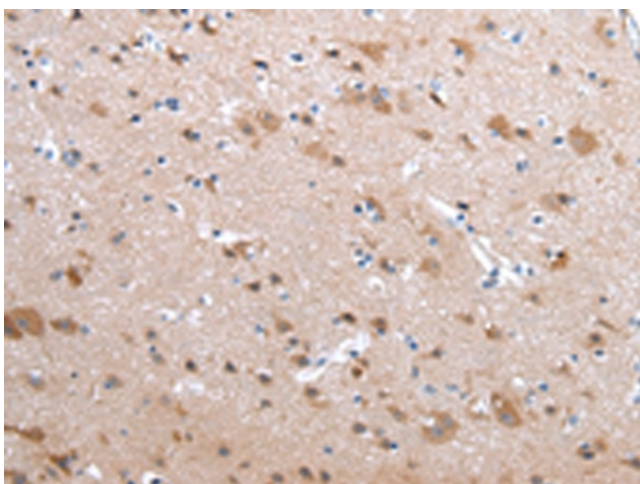
Product Type:	Primary Antibodies
Applications:	IHC, WB
Recommended Dilution:	WB: 200-1000 WB positive control: Human fetal intestines tissue IHC: 20-100 Positive control: Human brain Predicted cell location: Cytoplasm
Reactivity:	Human
Host:	Rabbit
Isotype:	IgG
Clonality:	Polyclonal
Immunogen:	Synthetic peptide of human CFC1
Formulation:	pH7.4 PBS, 0.05% NaN <sub>3</sub> , 40% Glycerol
Concentration:	lot specific
Purification:	Antigen affinity purification
Conjugation:	Unconjugated
Storage:	Store at -20°C.
Stability:	1 year
Predicted Protein Size:	25 kDa
Gene Name:	cripto, FRL-1, cryptic family 1
Database Link:	<a href="#">Entrez Gene 55997 Human P0CG37</a>
Background:	This gene encodes a member of the epidermal growth factor (EGF)- Cripto, Frl-1, and Cryptic (CFC) family, which are involved in signalling during embryonic development. Proteins in this family share a variant EGF-like motif, a conserved cysteine-rich domain, and a C-terminal hydrophobic region. The protein encoded by this gene is necessary for patterning the left-right embryonic axis.
Synonyms:	CRYPTIC; FLJ77897; HTX2; MGC133213



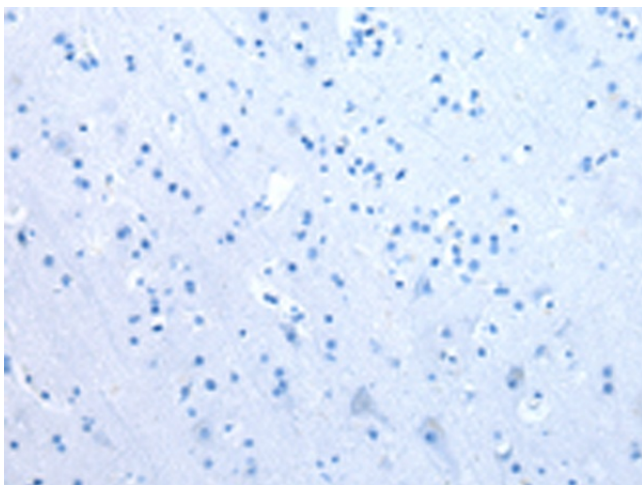
[View online »](#)

**Product images:**

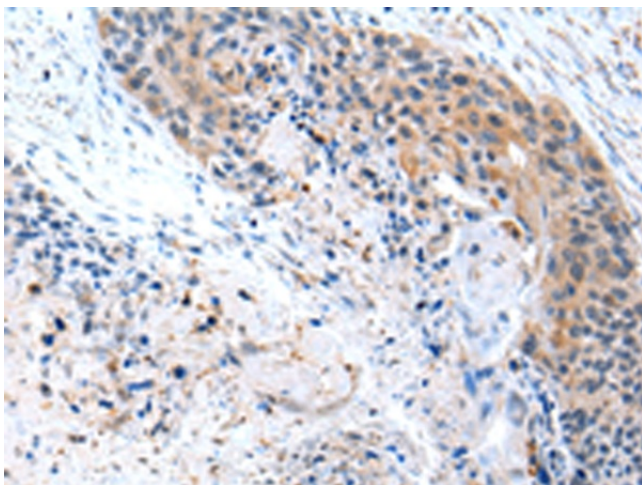
Gel: 12%SDS-PAGE  
Lysate: 40 µg  
Lane: Human fetal intestines tissue  
Primary antibody: TA367423 (CFC1 Antibody) at dilution 1/200  
Secondary antibody: Goat anti rabbit IgG at 1/8000 dilution  
Exposure time: 2 minutes



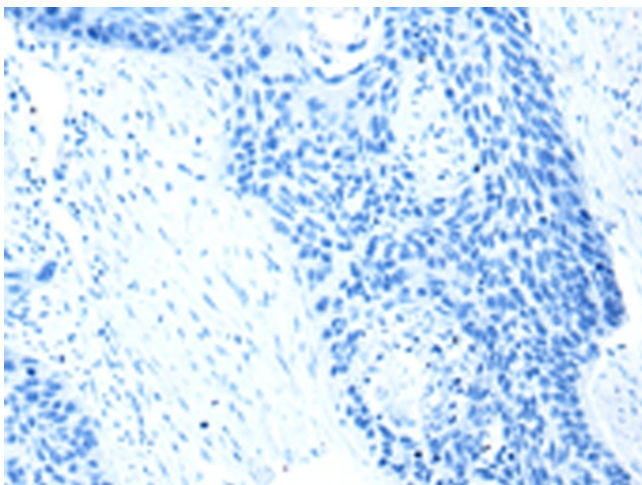
Immunohistochemistry of paraffin-embedded Human brain tissue using TA367423 (CFC1 Antibody) at dilution 1/20 (Original magnification: ×200)



Immunohistochemistry of paraffin-embedded Human brain tissue using TA367423 (CFC1 Antibody) at dilution 1/20, treated with synthetic peptide. (Original magnification:  $\times 200$ )



Immunohistochemistry of paraffin-embedded Human esophagus cancer tissue using TA367423 (CFC1 Antibody) at dilution 1/20 (Original magnification:  $\times 200$ )



Immunohistochemistry of paraffin-embedded Human esophagus cancer tissue using TA367423 (CFC1 Antibody) at dilution 1/20, treated with synthetic peptide. (Original magnification:  $\times 200$ )