

## Product datasheet for **TA367421S**

### GJB5 Rabbit Polyclonal Antibody

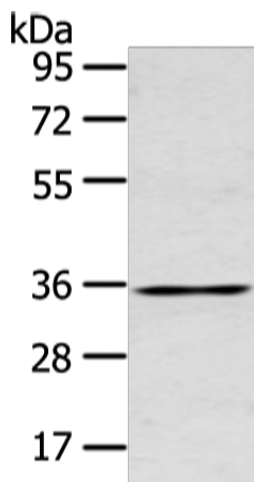
#### Product data:

Product Type:	Primary Antibodies
Applications:	WB
Recommended Dilution:	WB: 200-1000 WB positive control: Human placenta tissue
Reactivity:	Human, Mouse, Rat
Host:	Rabbit
Isotype:	IgG
Clonality:	Polyclonal
Immunogen:	Synthetic peptide of human GJB5
Formulation:	pH7.4 PBS, 0.05% NaN <sub>3</sub> , 40% Glycerol
Purification:	Antigen affinity purification
Conjugation:	Unconjugated
Storage:	Store at -20°C.
Stability:	1 year
Predicted Protein Size:	31 kDa
Gene Name:	gap junction protein beta 5
Database Link:	<a href="#">Entrez Gene 2709 Human O95377</a>
Background:	This gene encodes a member of the beta-type (group I) connexin family. The encoded protein is a gap junction protein involved in intercellular communication related to epidermal differentiation and environmental sensing. This gene has been linked to non-small cell lung cancer.
Synonyms:	Connexin-31.1; CX31.1



[View online »](#)

## Product images:



Gel: 10%SDS-PAGE

Lysate: 40  $\mu$ g

Lane: Human placenta tissue

Primary antibody: [TA367421] (GJB5 Antibody) at dilution 1/400

Secondary antibody: Goat anti rabbit IgG at 1/8000 dilution

Exposure time: 15 seconds