

Product datasheet for **TA367406**

Cathepsin S (CTSS) Rabbit Polyclonal Antibody

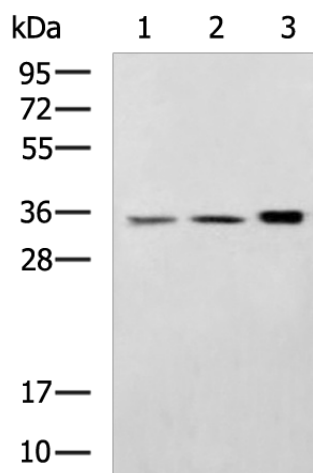
Product data:

Product Type:	Primary Antibodies
Applications:	IHC, WB
Recommended Dilution:	WB: 500-2000 WB positive control: Jurkat, 231 cell, Mouse brain tissue lysates IHC: 50-100 Positive control: Human liver cancer Predicted cell location: Cytoplasm
Reactivity:	Human, Mouse
Host:	Rabbit
Isotype:	IgG
Clonality:	Polyclonal
Immunogen:	Synthetic peptide of human CTSS
Formulation:	pH7.4 PBS, 0.05% NaN ₃ , 40% Glycerol
Concentration:	lot specific
Purification:	Antigen affinity purification
Conjugation:	Unconjugated
Storage:	Store at -20°C.
Stability:	1 year
Predicted Protein Size:	37 kDa
Gene Name:	cathepsin S
Database Link:	Entrez Gene 1520 Human P25774
Background:	The protein encoded by this gene, a member of the peptidase C1 family, is a lysosomal cysteine proteinase that may participate in the degradation of antigenic proteins to peptides for presentation on MHC class II molecules. The encoded protein can function as an elastase over a broad pH range in alveolar macrophages. Alternatively spliced transcript variants encoding distinct isoforms have been found for this gene.
Synonyms:	MGC3886

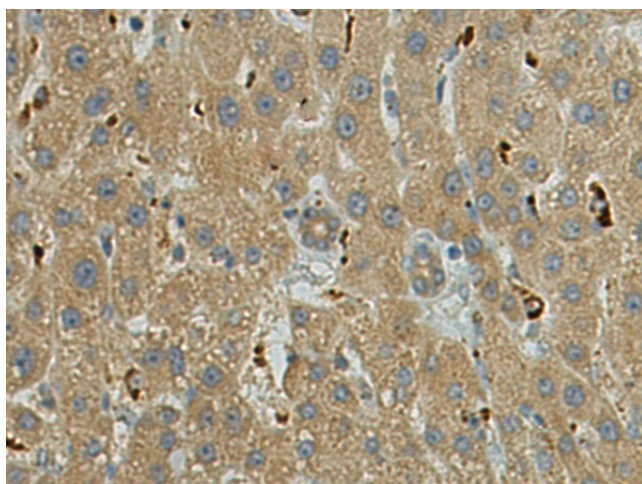


[View online »](#)

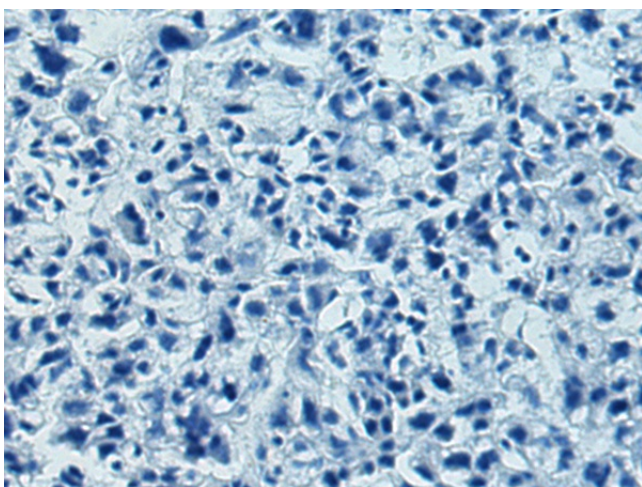
Product images:



Gel: 12%SDS-PAGE
Lysate: 40 μ g
Lane 1-3: Jurkat
231 cell
Mouse brain tissue lysates
Primary antibody: TA367406 (CTSS Antibody) at
dilution 1/1000
Secondary antibody: Goat anti rabbit IgG at
1/5000 dilution
Exposure time: 3 minutes



Immunohistochemistry of paraffin-embedded
Human liver cancer tissue using TA367406 (CTSS
Antibody) at dilution 1/40 (Original magnification:
 $\times 200$)



Immunohistochemistry of paraffin-embedded Human liver cancer tissue using TA367406 (CTSS Antibody) at dilution 1/40, treated with synthetic peptide. (Original magnification: $\times 200$)