

Product datasheet for **TA367402**

YRDC Rabbit Polyclonal Antibody

Product data:

| | |
|-------------------------|--|
| Product Type: | Primary Antibodies |
| Applications: | IHC, WB |
| Recommended Dilution: | WB: 500-2000 WB positive control: Mouse stomach tissue IHC: 25-100 Positive control: Human liver cancer Predicted cell location: Cell membrane |
| Reactivity: | Human, Mouse, Rat |
| Host: | Rabbit |
| Isotype: | IgG |
| Clonality: | Polyclonal |
| Immunogen: | Synthetic peptide of human YRDC |
| Formulation: | pH7.4 PBS, 0.05% NaN ₃ , 40% Glycerol |
| Concentration: | lot specific |
| Purification: | Antigen affinity purification |
| Conjugation: | Unconjugated |
| Storage: | Store at -20°C. |
| Stability: | 1 year |
| Predicted Protein Size: | 29 kDa |
| Gene Name: | yrdC N6-threonylcarbamoyltransferase domain containing |
| Database Link: | Entrez Gene 79693 Human Q86U90 |



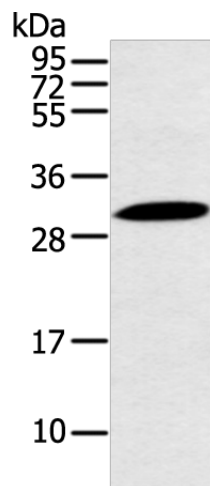
[View online »](#)

Background:

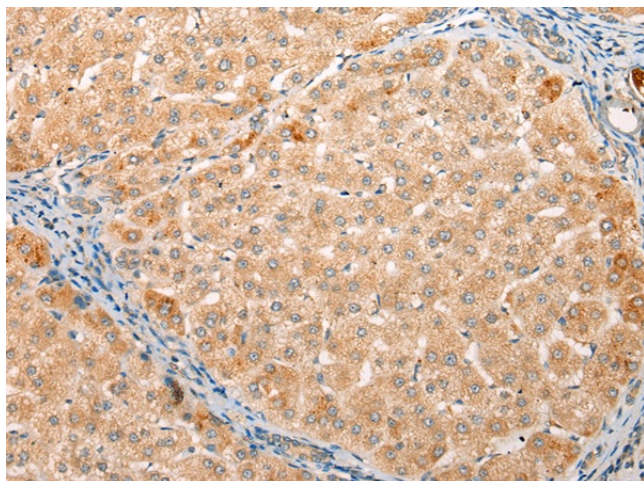
YrdC (yrdC domain containing protein), also known as IRIP (ischemia/reperfusion-inducible protein homolog), SUA5 or DRIP3 (dopamine receptor-interacting protein 3), is a 279 amino acid ubiquitously expressed protein found at highest levels in brain, liver and pancreas. A member of the SUA5 family, yrdC is involved in certain aspects of transporter activity, such as the regulation of efflux transporter activity and cargo assembly. YrdC is a peripheral membrane protein that contains one yrdC-like domain, interacts with RSC1A1 and localizes to mitochondrial and plasma membranes.

Synonyms:

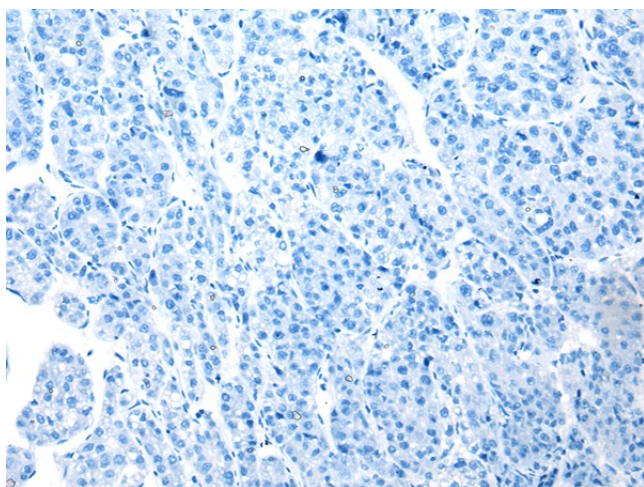
DRIP3; FLJ23476; FLJ26165; hIRIP; IRIP; RP11-109P14.4; SUA5

Product images:

Gel: 12%SDS-PAGE
Lysate: 40 µg
Lane: Mouse stomach tissue
Primary antibody: TA367402 (YRDC Antibody) at dilution 1/250
Secondary antibody: Goat anti rabbit IgG at 1/8000 dilution
Exposure time: 20 seconds



Immunohistochemistry of paraffin-embedded Human liver cancer tissue using TA367402 (YRDC Antibody) at dilution 1/20 (Original magnification: ×200)



Immunohistochemistry of paraffin-embedded Human liver cancer tissue using TA367402 (YRDC Antibody) at dilution 1/20, treated with synthetic peptide. (Original magnification: x200)