

Product datasheet for **TA367401**

HNF1 alpha (HNF1A) Rabbit Polyclonal Antibody

Product data:

| | |
|-------------------------|---|
| Product Type: | Primary Antibodies |
| Applications: | IHC, WB |
| Recommended Dilution: | WB: 500-2000 WB positive control: Human kidney tissue, Rat liver tissue, Mouse liver tissue and A172 cell lysates IHC: 25-100 Positive control: Human esophagus cancer Predicted cell location: Nucleus |
| Reactivity: | Human, Mouse, Rat |
| Host: | Rabbit |
| Isotype: | IgG |
| Clonality: | Polyclonal |
| Immunogen: | Synthetic peptide of human HNF1A |
| Formulation: | pH7.4 PBS, 0.05% NaN ₃ , 40% Glycerol |
| Concentration: | lot specific |
| Purification: | Antigen affinity purification |
| Conjugation: | Unconjugated |
| Storage: | Store at -20°C. |
| Stability: | 1 year |
| Predicted Protein Size: | 67 kDa |
| Gene Name: | HNF1 homeobox A |
| Database Link: | Entrez Gene 6927 Human P20823 |



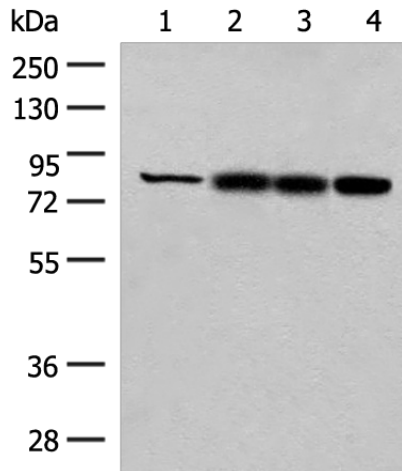
[View online »](#)

Background:

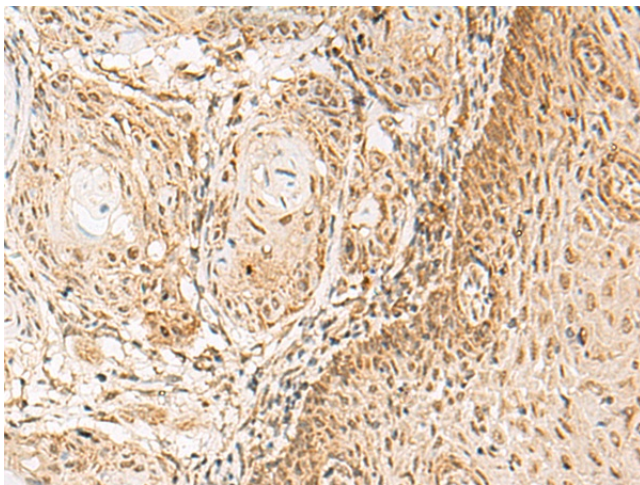
The protein encoded by this gene is a transcription factor required for the expression of several liver-specific genes. The encoded protein functions as a homodimer and binds to the inverted palindrome 5'-GTTAATNATTAAC-3'. Defects in this gene are a cause of maturity onset diabetes of the young type 3 (MODY3) and also can result in the appearance of hepatic adenomas. Alternative splicing results in multiple transcript variants encoding different isoforms.

Synonyms:

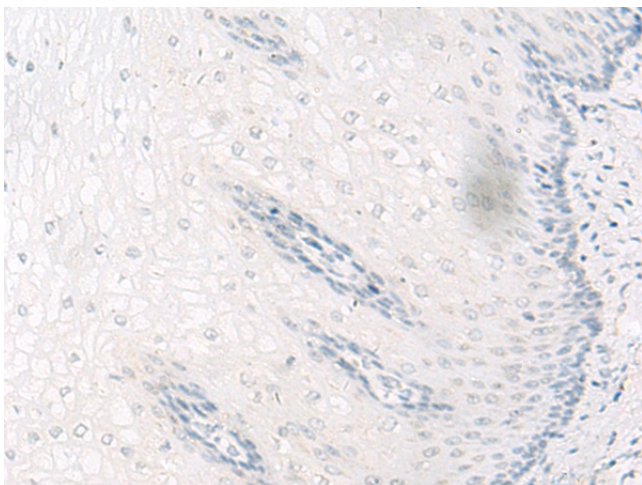
HNF-1A; HNF1; LFB1; MODY3; TCF-1; TCF1

Product images:


Gel: 8%SDS-PAGE
 Lysate: 40 µg
 Lane 1-4: Human kidney tissue
 Rat liver tissue
 Mouse liver tissue and A172 cell lysates
 Primary antibody: TA367401 (HNF1A Antibody) at dilution 1/250
 Secondary antibody: Goat anti rabbit IgG at 1/8000 dilution
 Exposure time: 10 seconds



Immunohistochemistry of paraffin-embedded Human esophagus cancer tissue using TA367401 (HNF1A Antibody) at dilution 1/30 (Original magnification: x200)



Immunohistochemistry of paraffin-embedded Human esophagus cancer tissue using TA367401 (HNF1A Antibody) at dilution 1/30, treated with synthetic peptide. (Original magnification: $\times 200$)