

Product datasheet for **TA367391**

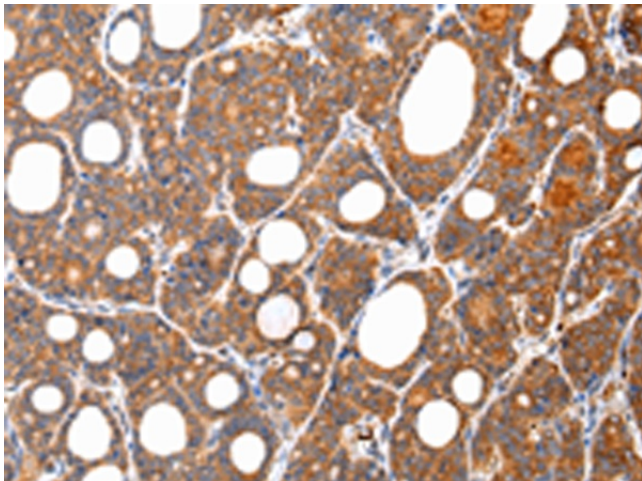
ZNF289 (ARFGAP2) Rabbit Polyclonal Antibody

Product data:

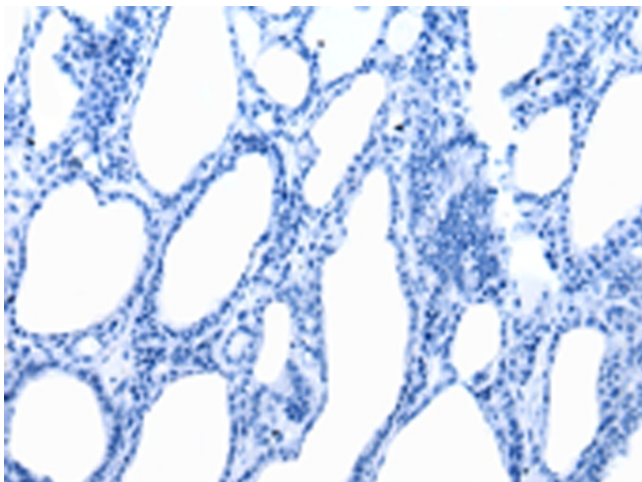
Product Type:	Primary Antibodies
Applications:	IHC
Recommended Dilution:	IHC: 25-100 Positive control: Human thyroid cancer Predicted cell location: Cytoplasm
Reactivity:	Human, Mouse, Rat
Host:	Rabbit
Isotype:	IgG
Clonality:	Polyclonal
Immunogen:	Synthetic peptide of human ARFGAP2
Formulation:	pH7.4 PBS, 0.05% NaN ₃ , 40% Glycerol
Concentration:	lot specific
Purification:	Antigen affinity purification
Conjugation:	Unconjugated
Storage:	Store at -20°C.
Stability:	1 year
Gene Name:	ADP ribosylation factor GTPase activating protein 2
Database Link:	Entrez Gene 84364 Human Q8N6H7
Background:	GTPase-activating protein (GAP) for ADP ribosylation factor 1 (ARF1). Implicated in coatamer-mediated protein transport between the Golgi complex and the endoplasmic reticulum. Hydrolysis of ARF1-bound GTP may lead to dissociation of coatamer from Golgi-derived membranes to allow fusion with target membranes.
Synonyms:	FLJ14576; FLJ26000; IRZ; Nbla10535; Zfp289; ZNF289



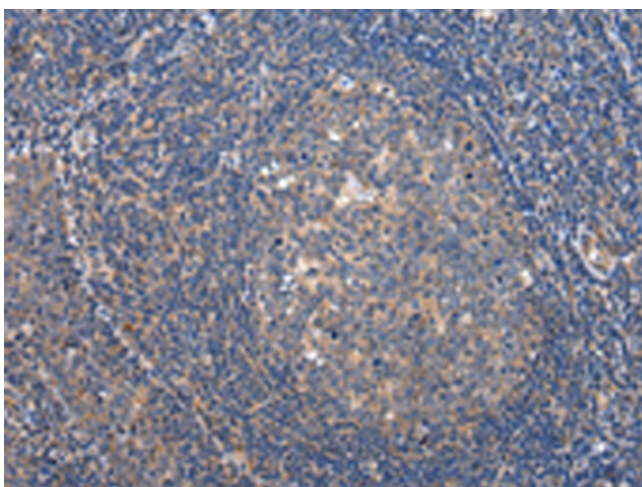
[View online »](#)

Product images:

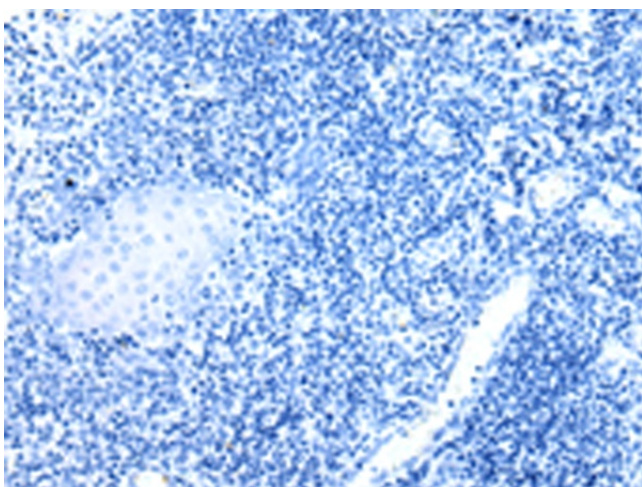
Immunohistochemistry of paraffin-embedded Human thyroid cancer tissue using TA367391 (ARFGAP2 Antibody) at dilution 1/35 (Original magnification: $\times 200$)



Immunohistochemistry of paraffin-embedded Human thyroid cancer tissue using TA367391 (ARFGAP2 Antibody) at dilution 1/35, treated with synthetic peptide. (Original magnification: $\times 200$)



Immunohistochemistry of paraffin-embedded Human tonsil tissue using TA367391 (ARFGAP2 Antibody) at dilution 1/35 (Original magnification: ×200)



Immunohistochemistry of paraffin-embedded Human tonsil tissue using TA367391 (ARFGAP2 Antibody) at dilution 1/35, treated with synthetic peptide. (Original magnification: ×200)