

## Product datasheet for **TA367385**

### **XKR3 Rabbit Polyclonal Antibody**

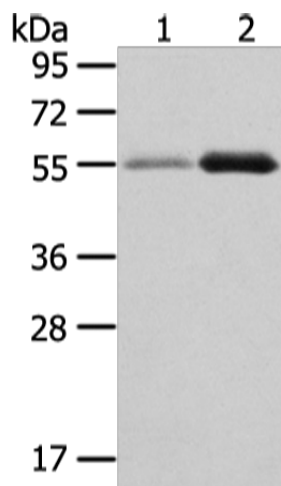
#### **Product data:**

Product Type:	Primary Antibodies
Applications:	WB
Recommended Dilution:	WB: 500-2000 WB positive control: Human normal stomach and thyroid cancer tissue
Reactivity:	Human
Host:	Rabbit
Isotype:	IgG
Clonality:	Polyclonal
Immunogen:	Synthetic peptide of human XKR3
Formulation:	pH7.4 PBS, 0.05% NaN <sub>3</sub> , 40% Glycerol
Concentration:	lot specific
Purification:	Antigen affinity purification
Conjugation:	Unconjugated
Storage:	Store at -20°C.
Stability:	1 year
Predicted Protein Size:	53 kDa
Gene Name:	XK related 3
Database Link:	<a href="#">Entrez Gene 150165 Human Q5GH77</a>
Background:	XKRX (MIM 300684) and XKR3 are homologs of the Kell blood group precursor XK (MIM 314850), which is a putative membrane transporter and a component of the XK/Kell complex of the Kell blood group system (Calenda et al., 2006 [PubMed 16431037]).
Synonyms:	MGC57211; XRG3; XTES



[View online »](#)

## Product images:



Gel: 8%SDS-PAGE

Lysate: 40  $\mu$ g

Lane 1-2: Human normal stomach and thyroid cancer tissue

Primary antibody: TA367385 (XKR3 Antibody) at dilution 1/330

Secondary antibody: Goat anti rabbit IgG at 1/8000 dilution

Exposure time: 2 minutes