

Product datasheet for **TA367384S**

XAF1 Rabbit Polyclonal Antibody

Product data:

Product Type: Primary Antibodies
Applications: IHC
Recommended Dilution: IHC: 10-50
 Positive control: Human prostate cancer
 Predicted cell location: Nucleus and Cytoplasm

Reactivity: Human

Host: Rabbit

Isotype: IgG

Clonality: Polyclonal

Immunogen: Synthetic peptide of human XAF1

Formulation: pH7.4 PBS, 0.05% NaN₃, 40% Glycerol

Purification: Antigen affinity purification

Conjugation: Unconjugated

Storage: Store at -20°C.

Stability: 1 year

Gene Name: XIAP associated factor 1

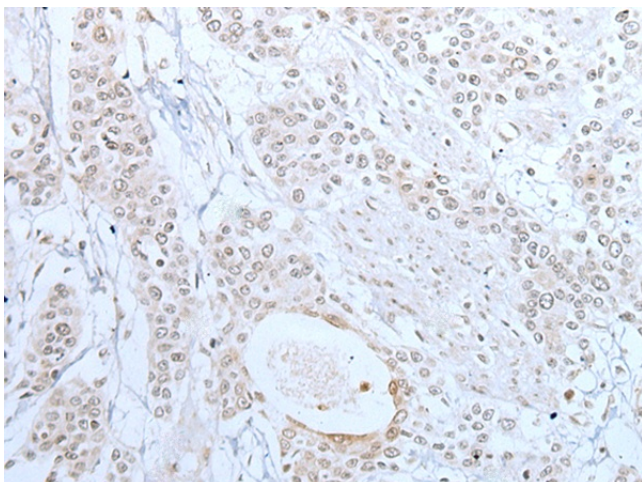
Database Link: [Entrez Gene 54739 Human Q6GPH4](#)

Background: This gene encodes a protein which binds to and counteracts the inhibitory effect of a member of the IAP (inhibitor of apoptosis) protein family. IAP proteins bind to and inhibit caspases which are activated during apoptosis. The proportion of IAPs and proteins which interfere with their activity, such as the encoded protein, affect the progress of the apoptosis signaling pathway. Multiple transcript variants encoding different isoforms have been found for this gene.

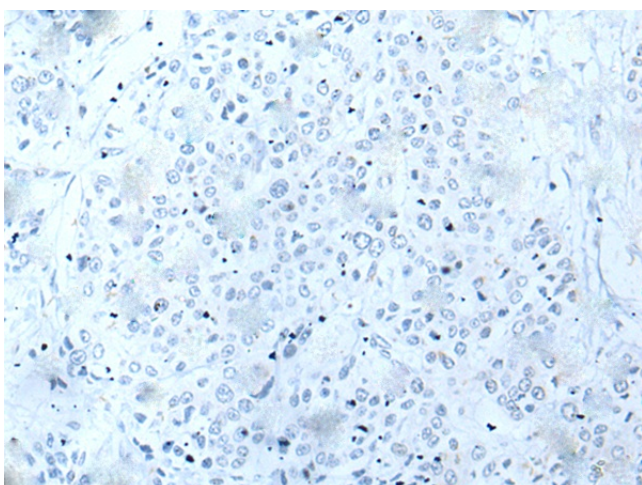
Synonyms: BIRC4BP; HSXIAPAF1; XIAPAF1



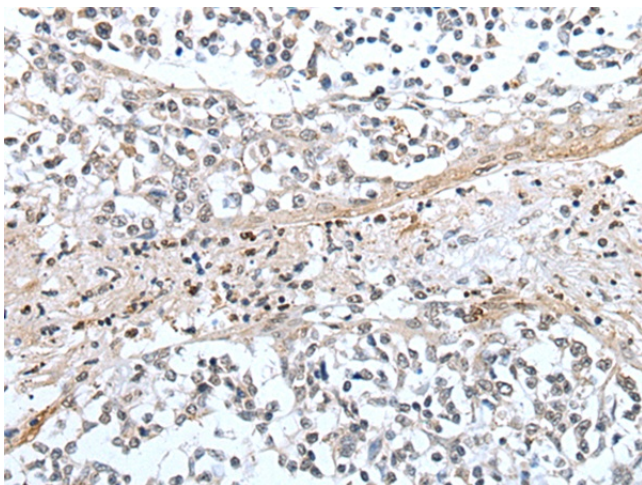
[View online »](#)

Product images:


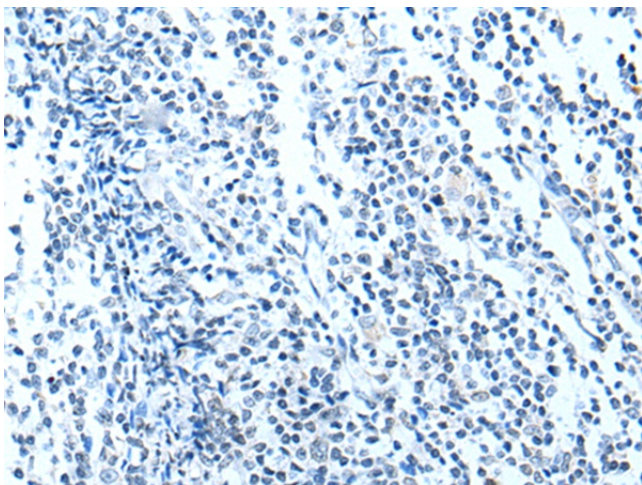
Immunohistochemistry of paraffin-embedded Human prostate cancer tissue using [TA367384] (XAF1 Antibody) at dilution 1/25 (Original magnification: $\times 200$)



Immunohistochemistry of paraffin-embedded Human prostate cancer tissue using [TA367384] (XAF1 Antibody) at dilution 1/25, treated with synthetic peptide. (Original magnification: $\times 200$)



Immunohistochemistry of paraffin-embedded Human tonsil tissue using [TA367384] (XAF1 Antibody) at dilution 1/25 (Original magnification: ×200)



Immunohistochemistry of paraffin-embedded Human tonsil tissue using [TA367384] (XAF1 Antibody) at dilution 1/25, treated with synthetic peptide. (Original magnification: ×200)