

Product datasheet for **TA367379**

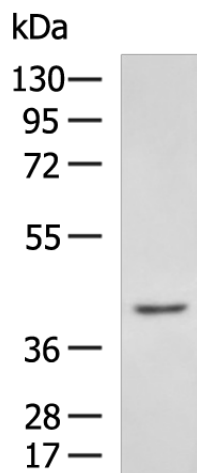
SOX3 Rabbit Polyclonal Antibody

Product data:

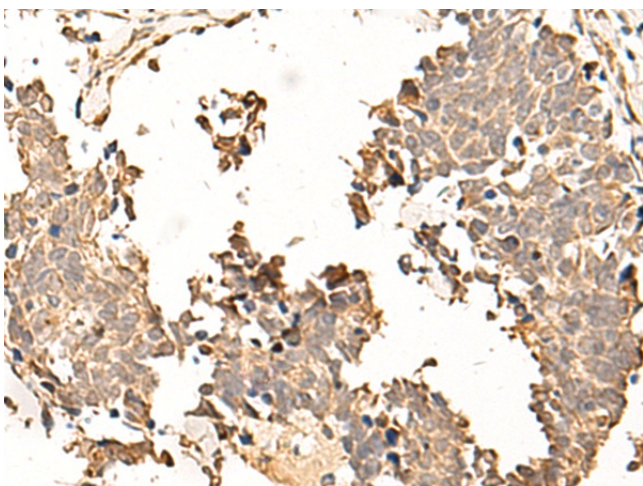
| | |
|-------------------------|---|
| Product Type: | Primary Antibodies |
| Applications: | IHC, WB |
| Recommended Dilution: | WB: 200-1000 WB positive control: 293T cell lysate IHC: 50-300 Positive control: Human lung cancer Predicted cell location: Nucleus |
| Reactivity: | Human, Mouse |
| Host: | Rabbit |
| Isotype: | IgG |
| Clonality: | Polyclonal |
| Immunogen: | Synthetic peptide of human SOX3 |
| Formulation: | pH7.4 PBS, 0.05% NaN ₃ , 40% Glycerol |
| Concentration: | lot specific |
| Purification: | Antigen affinity purification |
| Conjugation: | Unconjugated |
| Storage: | Store at -20°C. |
| Stability: | 1 year |
| Predicted Protein Size: | 45 kDa |
| Gene Name: | SRY-box 3 |
| Database Link: | Entrez Gene 6658 Human P41225 |
| Background: | This gene encodes a member of the SOX (SRY-related HMG-box) family of transcription factors involved in the regulation of embryonic development and in the determination of the cell fate. The encoded protein may act as a transcriptional regulator after forming a protein complex with other proteins. Mutations in this gene have been associated with X-linked mental retardation with growth hormone deficiency. |
| Synonyms: | GHDX; MRGH; panhypopituitarism; PHP; PHPX; SOXB |



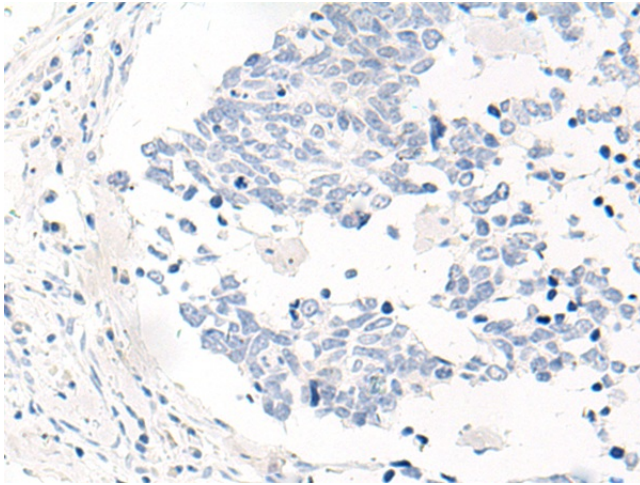
[View online »](#)

Product images:

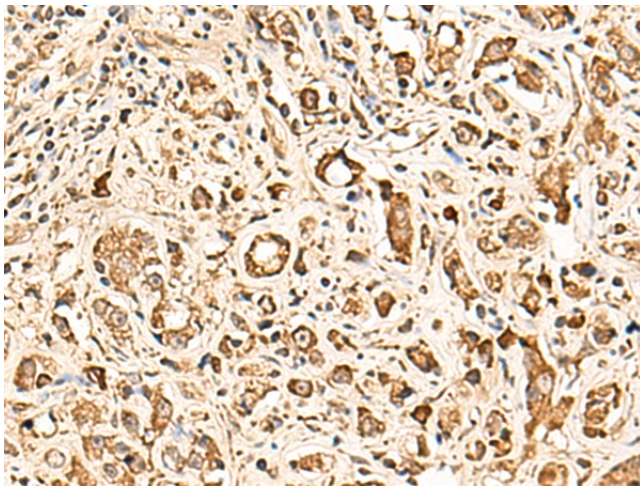
Gel: 8%SDS-PAGE
Lysate: 40 μ g
Lane: 293T cell lysate
Primary antibody: TA367379 (SOX3 Antibody) at dilution 1/400
Secondary antibody: Goat anti rabbit IgG at 1/5000 dilution
Exposure time: 1 minute



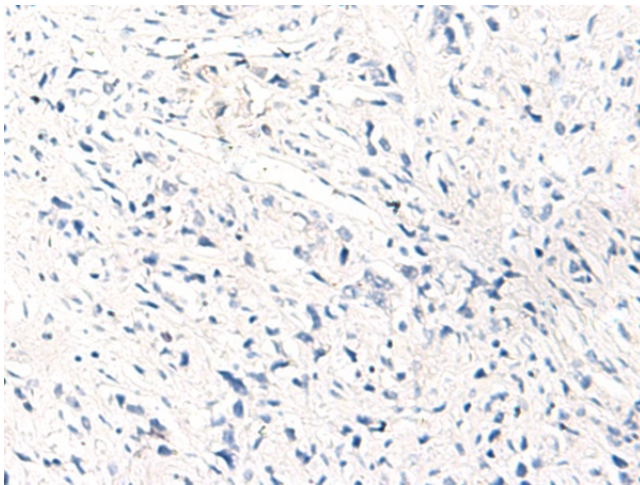
Immunohistochemistry of paraffin-embedded Human lung cancer tissue using TA367379 (SOX3 Antibody) at dilution 1/50 (Original magnification: \times 200)



Immunohistochemistry of paraffin-embedded Human lung cancer tissue using TA367379 (SOX3 Antibody) at dilution 1/50, treated with synthetic peptide. (Original magnification: x200)



Immunohistochemistry of paraffin-embedded Human prostate cancer tissue using TA367379 (SOX3 Antibody) at dilution 1/50 (Original magnification: x200)



Immunohistochemistry of paraffin-embedded Human prostate cancer tissue using TA367379 (SOX3 Antibody) at dilution 1/50, treated with synthetic peptide. (Original magnification: x200)