

## Product datasheet for **TA367374**

### CD70 Rabbit Polyclonal Antibody

#### Product data:

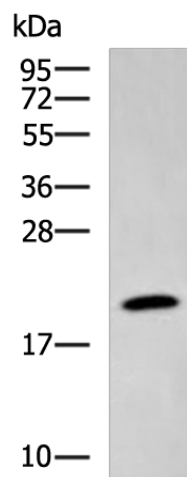
Product Type:	Primary Antibodies
Applications:	IHC, WB
Recommended Dilution:	WB: 500-2000 WB positive control: A172 cell lysate IHC: 50-100 Positive control: Human esophagus cancer Predicted cell location: Cytoplasm and Cell membrane
Reactivity:	Human, Mouse
Host:	Rabbit
Isotype:	IgG
Clonality:	Polyclonal
Immunogen:	Synthetic peptide of human CD70
Formulation:	pH7.4 PBS, 0.05% NaN <sub>3</sub> , 40% Glycerol
Concentration:	lot specific
Purification:	Antigen affinity purification
Conjugation:	Unconjugated
Storage:	Store at -20°C.
Stability:	1 year
Predicted Protein Size:	21 kDa
Gene Name:	CD70 molecule
Database Link:	<a href="#">Entrez Gene 970 Human P32970</a>
Background:	The protein encoded by this gene is a cytokine that belongs to the tumor necrosis factor (TNF) ligand family. This cytokine is a ligand for TNFRSF27/CD27. It is a surface antigen on activated, but not on resting, T and B lymphocytes. It induces proliferation of costimulated T cells, enhances the generation of cytolytic T cells, and contributes to T cell activation. This cytokine is also reported to play a role in regulating B-cell activation, cytotoxic function of natural killer cells, and immunoglobulin synthesis.



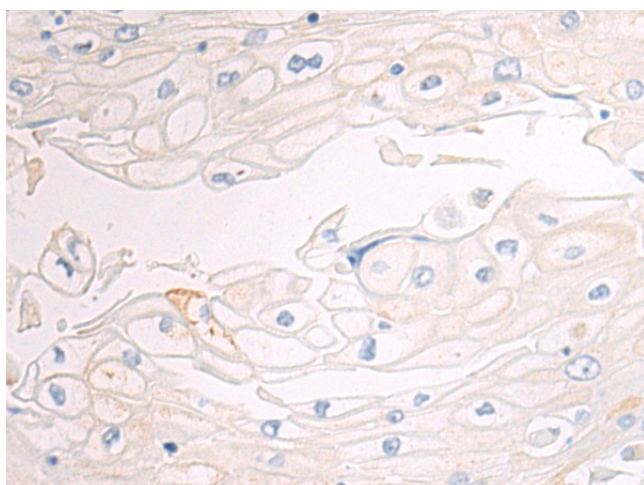
[View online »](#)

Synonyms: CD27-L; CD27L; CD27LG; TNFSF7

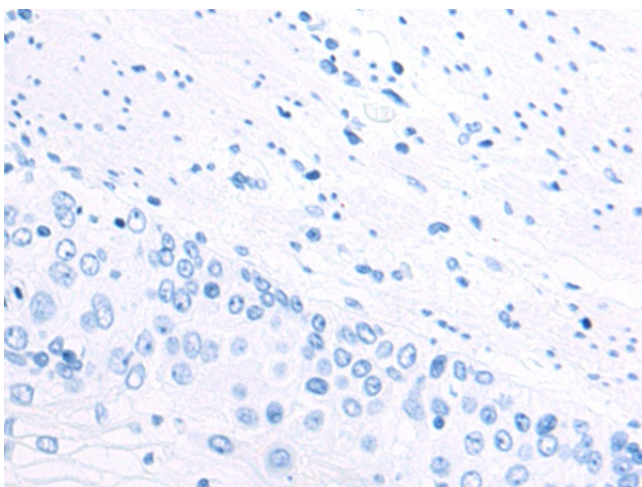
### Product images:



Gel: 12%SDS-PAGE  
Lysate: 40  $\mu$ g  
Lane: A172 cell lysate  
Primary antibody: TA367374 (CD70 Antibody) at dilution 1/650  
Secondary antibody: Goat anti rabbit IgG at 1/5000 dilution  
Exposure time: 30 seconds



Immunohistochemistry of paraffin-embedded Human esophagus cancer tissue using TA367374 (CD70 Antibody) at dilution 1/50 (Original magnification:  $\times$ 200)



Immunohistochemistry of paraffin-embedded Human esophagus cancer tissue using TA367374 (CD70 Antibody) at dilution 1/50, treated with synthetic peptide. (Original magnification:  $\times 200$ )