

## Product datasheet for **TA367373S**

### CD39 (ENTPD1) Rabbit Polyclonal Antibody

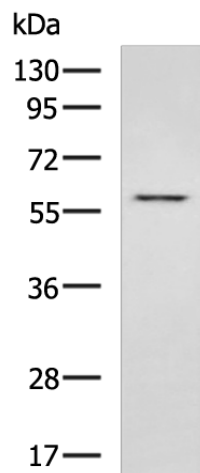
#### Product data:

Product Type:	Primary Antibodies
Applications:	IHC, WB
Recommended Dilution:	WB: 200-1000 WB positive control: Jurkat cell lysate IHC: 50-100 Positive control: Human gastric cancer Predicted cell location: Cell membrane
Reactivity:	Human, Mouse, Rat
Host:	Rabbit
Isotype:	IgG
Clonality:	Polyclonal
Immunogen:	Synthetic peptide of human ENTPD1
Formulation:	pH7.4 PBS, 0.05% NaN <sub>3</sub> , 40% Glycerol
Purification:	Antigen affinity purification
Conjugation:	Unconjugated
Storage:	Store at -20°C.
Stability:	1 year
Predicted Protein Size:	58 kDa
Gene Name:	ectonucleoside triphosphate diphosphohydrolase 1
Database Link:	<a href="#">Entrez Gene 953 Human P49961</a>
Background:	The protein encoded by this gene is a plasma membrane protein that hydrolyzes extracellular ATP and ADP to AMP. Inhibition of this protein's activity may confer anticancer benefits. Several transcript variants encoding different isoforms have been found for this gene.
Synonyms:	ATPDase; CD39; DKFZp686D194; DKFZp686I093; ecto-apyrase; FLJ40921; FLJ40959; NTPDase-1

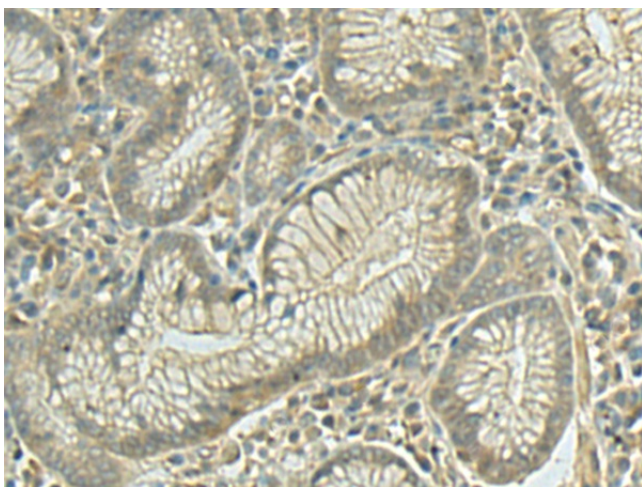


[View online »](#)

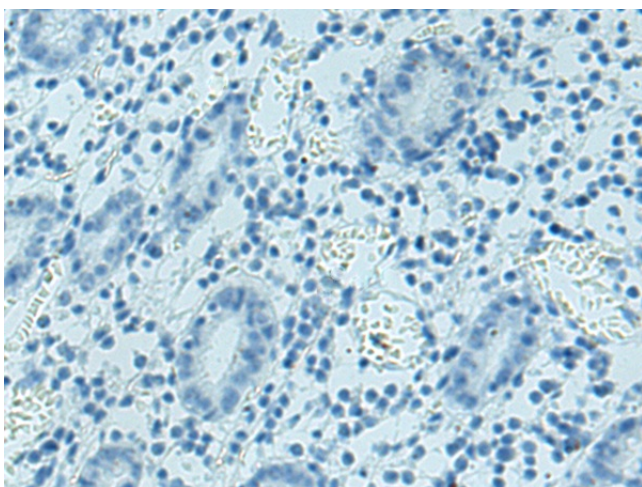
## Product images:



Gel: 8%SDS-PAGE  
Lysate: 40  $\mu$ g  
Lane: Jurkat cell lysate  
Primary antibody: [TA367373] (ENTPD1 Antibody) at dilution 1/400  
Secondary antibody: Goat anti rabbit IgG at 1/5000 dilution  
Exposure time: 2 minutes



Immunohistochemistry of paraffin-embedded Human gastric cancer tissue using [TA367373] (ENTPD1 Antibody) at dilution 1/40 (Original magnification:  $\times$ 200)



Immunohistochemistry of paraffin-embedded Human gastric cancer tissue using [TA367373] (ENTPD1 Antibody) at dilution 1/40, treated with synthetic peptide. (Original magnification: ×200)