

## Product datasheet for **TA367366**

### WAPL Rabbit Polyclonal Antibody

#### Product data:

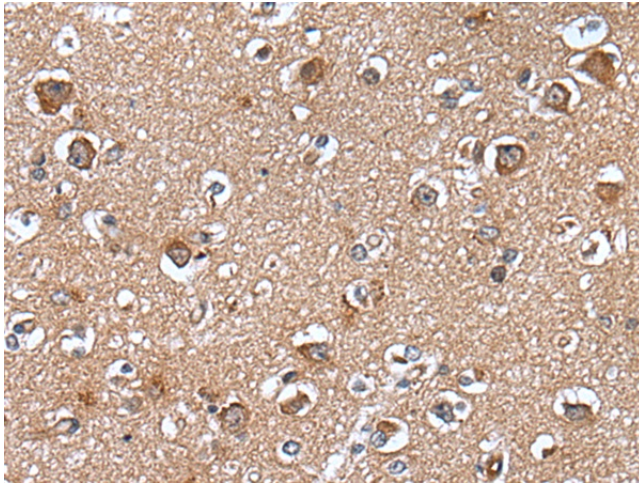
Product Type:	Primary Antibodies
Applications:	IHC
Recommended Dilution:	IHC: 20-100 Positive control: Human brain Predicted cell location: Nucleus or Cytoplasm
Reactivity:	Human, Mouse
Host:	Rabbit
Isotype:	IgG
Clonality:	Polyclonal
Immunogen:	Synthetic peptide of human WAPL
Formulation:	pH7.4 PBS, 0.05% NaN <sub>3</sub> , 40% Glycerol
Concentration:	lot specific
Purification:	Antigen affinity purification
Conjugation:	Unconjugated
Storage:	Store at -20°C.
Stability:	1 year
Gene Name:	WAPL cohesin release factor
Database Link:	<a href="#">Entrez Gene 23063 Human Q7Z5K2</a>



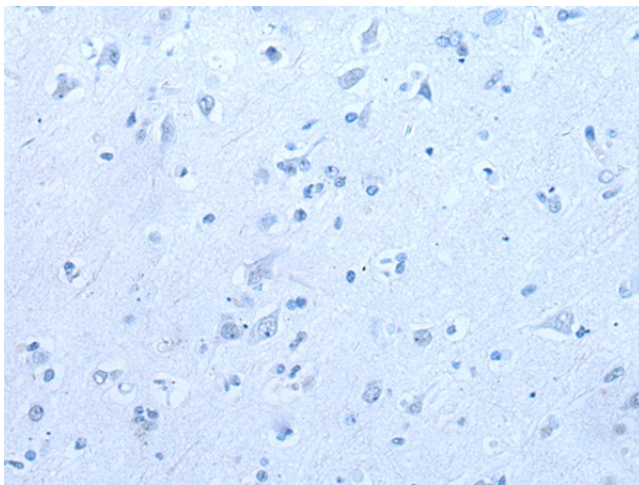
[View online »](#)

**Background:**

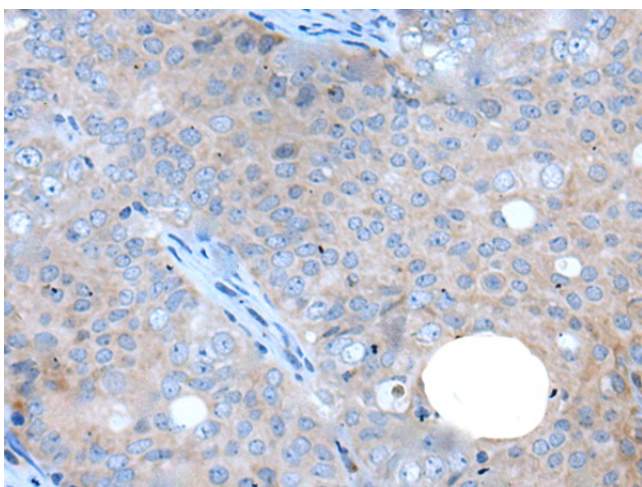
WAPL (wings apart-like), also known as WAPAL or FOE, is a 1,190 amino acid protein that contains one WAPL domain and is expressed as two alternatively spliced isoforms, one of which localizes to the nucleus. Expressed in an isoform-dependent manner in heart, skeletal muscle and uterine cervix tumor tissue, WAPL is involved in sister-chromatid adhesion and overall cell growth, specifically playing a role in the development and metastasis of cancerous tissue. The gene encoding WAPL maps to human chromosome 10, which houses over 1,200 genes and comprises nearly 4.5% of the human genome. Defects in some of the genes that map to chromosome 10 are associated with Charcot-Marie Tooth disease, Jackson-Weiss syndrome, Usher syndrome, nonsyndromic deafness, Wolman's syndrome, Cowden syndrome, multiple endocrine neoplasia type 2 and porphyria.

**Product images:**

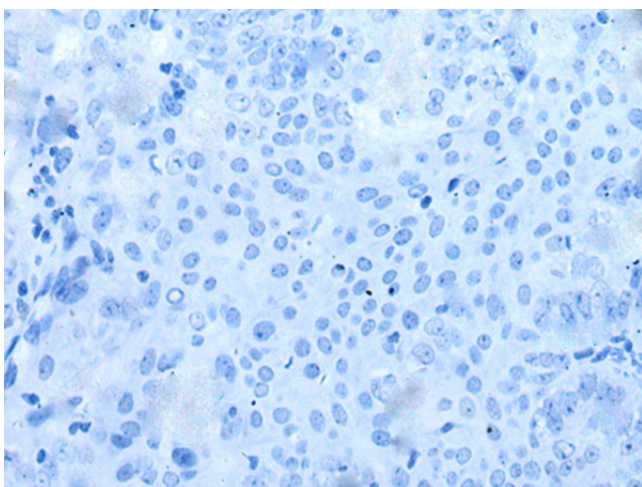
Immunohistochemistry of paraffin-embedded Human brain tissue using TA367366 (WAPL Antibody) at dilution 1/35 (Original magnification: ×200)



Immunohistochemistry of paraffin-embedded Human brain tissue using TA367366 (WAPL Antibody) at dilution 1/35, treated with synthetic peptide. (Original magnification: ×200)



Immunohistochemistry of paraffin-embedded Human ovarian cancer tissue using TA367366 (WAPL Antibody) at dilution 1/35 (Original magnification:  $\times 200$ )



Immunohistochemistry of paraffin-embedded Human ovarian cancer tissue using TA367366 (WAPL Antibody) at dilution 1/35, treated with synthetic peptide. (Original magnification:  $\times 200$ )