

## Product datasheet for **TA367360S**

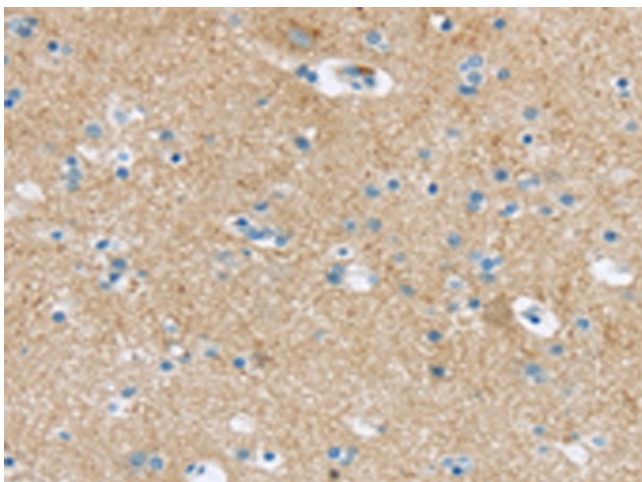
### VAMP1 Rabbit Polyclonal Antibody

#### Product data:

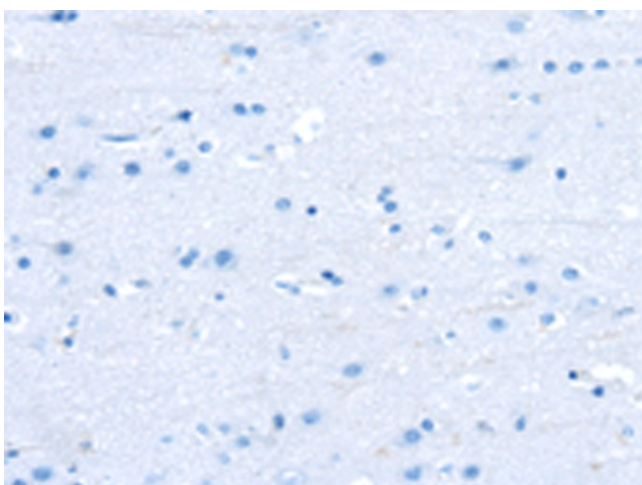
Product Type:	Primary Antibodies
Applications:	IHC
Recommended Dilution:	IHC: 20-100 Positive control: Human brain Predicted cell location: Cytoplasm
Reactivity:	Human, Mouse, Rat
Host:	Rabbit
Isotype:	IgG
Clonality:	Polyclonal
Immunogen:	Synthetic peptide of human VAMP1
Formulation:	pH7.4 PBS, 0.05% NaN <sub>3</sub> , 40% Glycerol
Purification:	Antigen affinity purification
Conjugation:	Unconjugated
Storage:	Store at -20°C.
Stability:	1 year
Gene Name:	vesicle associated membrane protein 1
Database Link:	<a href="#">Entrez Gene 6843 Human P23763</a>
Background:	Synaptobrevins, syntaxins, and the synaptosomal-associated protein SNAP25 are the main components of a protein complex involved in the docking and/or fusion of synaptic vesicles with the presynaptic membrane. The protein encoded by this gene is a member of the vesicle-associated membrane protein (VAMP)/synaptobrevin family. Mutations in this gene are associated with autosomal dominant spastic ataxia 1. Multiple alternative splice variants have been described, but the full-length nature of some variants has not been defined.
Synonyms:	DKFZp686H12131; SYB1; Synaptobrevin-1; VAMP-1



[View online »](#)

**Product images:**

Immunohistochemistry of paraffin-embedded Human brain tissue using [TA367360] (VAMP1 Antibody) at dilution 1/25 (Original magnification:  $\times 200$ )



Immunohistochemistry of paraffin-embedded Human brain tissue using [TA367360] (VAMP1 Antibody) at dilution 1/25, treated with synthetic peptide. (Original magnification:  $\times 200$ )