

Product datasheet for **TA367358**

UTS2D (UTS2B) Rabbit Polyclonal Antibody

Product data:

Product Type:	Primary Antibodies
Applications:	IHC, WB
Recommended Dilution:	WB: 200-1000 WB positive control: Lovo cells and Human liver cancer tissue IHC: 25-100 Positive control: Human thyroid cancer Predicted cell location: Cytoplasm
Reactivity:	Human
Host:	Rabbit
Isotype:	IgG
Clonality:	Polyclonal
Immunogen:	Synthetic peptide of human UTS2B
Formulation:	pH7.4 PBS, 0.05% NaN ₃ , 40% Glycerol
Concentration:	lot specific
Purification:	Antigen affinity purification
Conjugation:	Unconjugated
Storage:	Store at -20°C.
Stability:	1 year
Predicted Protein Size:	14 kDa
Gene Name:	urotensin 2B
Database Link:	Entrez Gene 257313 Human Q765I0



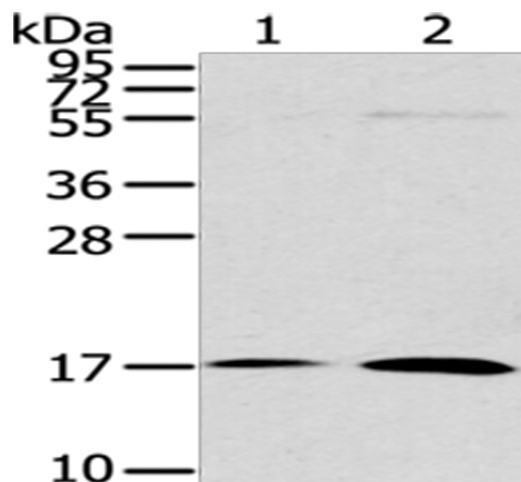
[View online »](#)

Background:

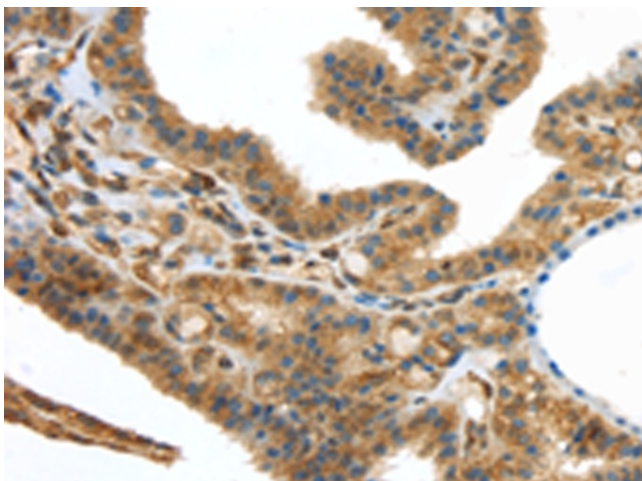
Potent vasoconstrictor. Human Urotensin II is composed of only 11 amino acid residues, while fish and frog Urotensin II possess 12 and 13 amino acid residues, respectively (2). Human Urotensin II is found within both vascular and cardiac tissue, including coronary atheroma, and effectively constricts isolated arteries from nonhuman primates (3). Urotensin II may act as an autocrine and/or paracrine hormone rather than as a circulating hormone, by playing an important role in the development of ventricular hypertrophy induced by chronic hypoxia (4).

Synonyms:

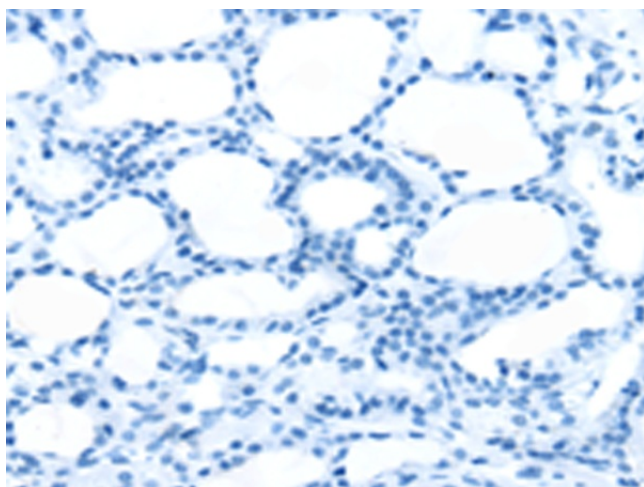
U2B; URP; UTS2D

Product images:


Gel: 12%SDS-PAGE
 Lysate: 40 µg
 Lane 1-2: Lovo cells
 Human liver cancer tissue
 Primary antibody: TA367358 (UTS2B Antibody) at dilution 1/200
 Secondary antibody: Goat anti rabbit IgG at 1/8000 dilution
 Exposure time: 2 minutes



Immunohistochemistry of paraffin-embedded Human thyroid cancer tissue using TA367358 (UTS2B Antibody) at dilution 1/25 (Original magnification: ×200)



Immunohistochemistry of paraffin-embedded Human thyroid cancer tissue using TA367358 (UTS2B Antibody) at dilution 1/25, treated with synthetic peptide. (Original magnification: ×200)