

## Product datasheet for **TA367357S**

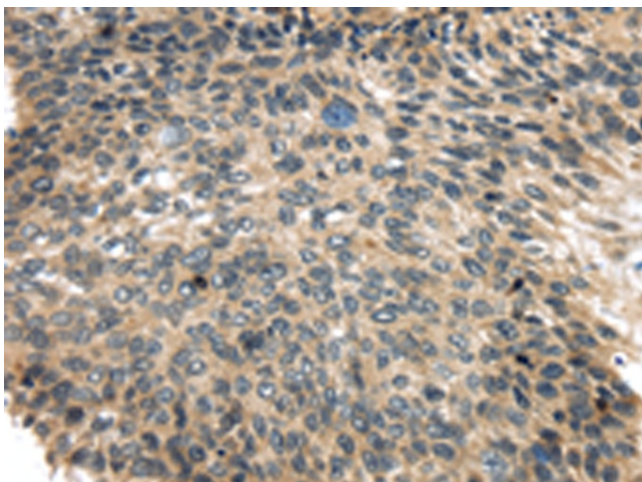
### USP9X Rabbit Polyclonal Antibody

#### Product data:

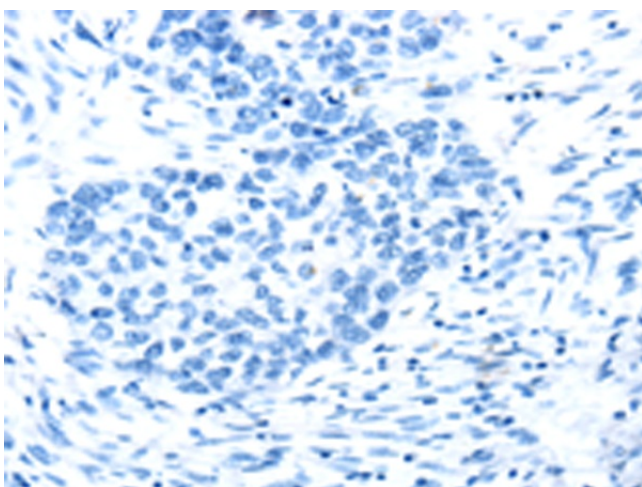
|                       |   |
|-----------------------|---|
| Product Type:         | Primary Antibodies  |
| Applications:         | IHC   |
| Recommended Dilution: | IHC: 25-100<br>Positive control: Human esophagus cancer<br>Predicted cell location: Cytoplasm or Nucleus  |
| Reactivity:           | Human, Mouse  |
| Host:                 | Rabbit  |
| Isotype:              | IgG   |
| Clonality:            | Polyclonal  |
| Immunogen:            | Synthetic peptide of human USP9X  |
| Formulation:          | pH7.4 PBS, 0.05% NaN <sub>3</sub> , 40% Glycerol  |
| Purification:         | Antigen affinity purification   |
| Conjugation:          | Unconjugated  |
| Storage:              | Store at -20°C.   |
| Stability:            | 1 year  |
| Gene Name:            | ubiquitin specific peptidase 9, X-linked  |
| Database Link:        | <a href="#">Entrez Gene 8239 Human Q93008</a>   |
| Background:           | This gene is a member of the peptidase C19 family and encodes a protein that is similar to ubiquitin-specific proteases. Though this gene is located on the X chromosome, it escapes X-inactivation. Mutations in this gene have been associated with Turner syndrome. Alternate transcriptional splice variants, encoding different isoforms, have been characterized. |
| Synonyms:             | DFFRX; FAF; FAM; hFAM; USP9   |



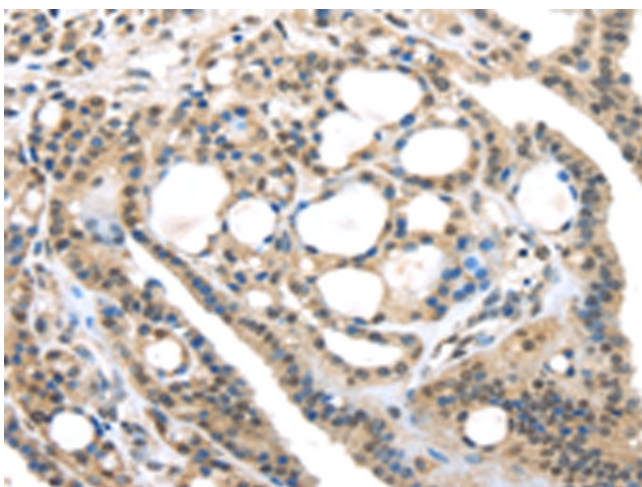
[View online »](#)

**Product images:**

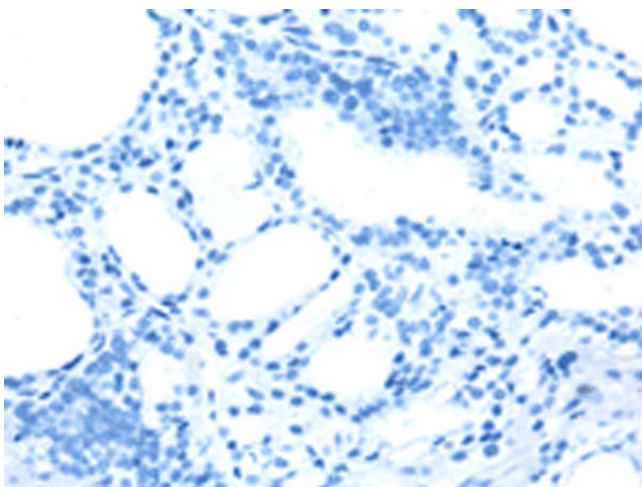
Immunohistochemistry of paraffin-embedded Human esophagus cancer tissue using [TA367357] (USP9X Antibody) at dilution 1/35 (Original magnification:  $\times 200$ )



Immunohistochemistry of paraffin-embedded Human esophagus cancer tissue using [TA367357] (USP9X Antibody) at dilution 1/35, treated with synthetic peptide. (Original magnification:  $\times 200$ )



Immunohistochemistry of paraffin-embedded Human thyroid cancer tissue using [TA367357] (USP9X Antibody) at dilution 1/35 (Original magnification:  $\times 200$ )



Immunohistochemistry of paraffin-embedded Human thyroid cancer tissue using [TA367357] (USP9X Antibody) at dilution 1/35, treated with synthetic peptide. (Original magnification:  $\times 200$ )