

## Product datasheet for **TA367356**

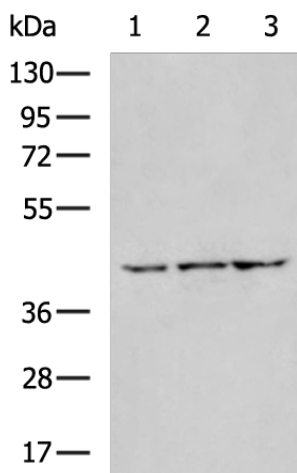
### UPP2 Rabbit Polyclonal Antibody

#### Product data:

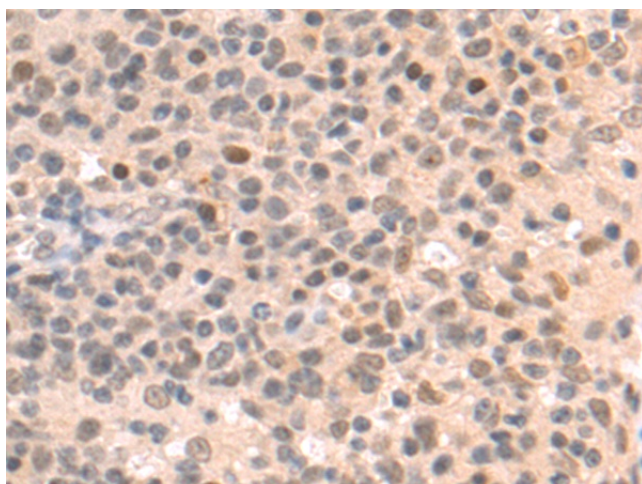
Product Type:	Primary Antibodies
Applications:	IHC, WB
Recommended Dilution:	WB: 500-2000 WB positive control: Mouse kidney tissue, Mouse brain tissue, Mouse heart tissue lysates IHC: 50-200 Positive control: Human tonsil Predicted cell location: Cytoplasm and Nucleus
Reactivity:	Human, Mouse
Host:	Rabbit
Isotype:	IgG
Clonality:	Polyclonal
Immunogen:	Synthetic peptide of human UPP2
Formulation:	pH7.4 PBS, 0.05% NaN <sub>3</sub> , 40% Glycerol
Concentration:	lot specific
Purification:	Antigen affinity purification
Conjugation:	Unconjugated
Storage:	Store at -20°C.
Stability:	1 year
Predicted Protein Size:	36 kDa
Gene Name:	uridine phosphorylase 2
Database Link:	<a href="#">Entrez Gene 151531 Human O95045</a>
Background:	Catalyzes the reversible phosphorylytic cleavage of uridine and deoxyuridine to uracil and ribose- or deoxyribose-1-phosphate. The produced molecules are then utilized as carbon and energy sources or in the rescue of pyrimidine bases for nucleotide synthesis. Shows substrate specificity and accept uridine, deoxyuridine, and thymidine as well as the two pyrimidine nucleoside analogs 5-fluorouridine and 5-fluoro-2(')-deoxyuridine as substrates.
Synonyms:	UDRPASE2; UP2; UPASE2



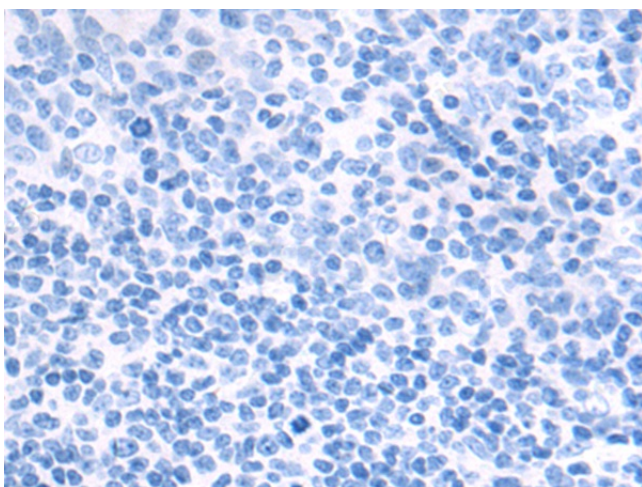
[View online »](#)

**Product images:**

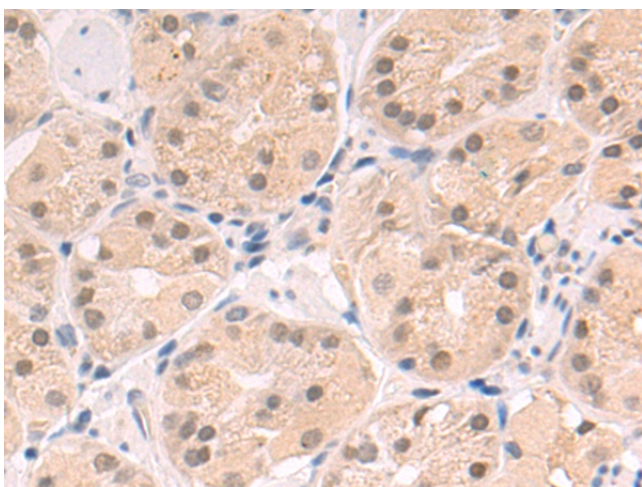
Gel: 8%SDS-PAGE  
Lysate: 40 µg  
Lane 1-3: Mouse kidney tissue  
Mouse brain tissue  
Mouse heart tissue lysates  
Primary antibody: TA367356 (UPP2 Antibody) at dilution 1/700  
Secondary antibody: Goat anti rabbit IgG at 1/5000 dilution  
Exposure time: 3 minutes



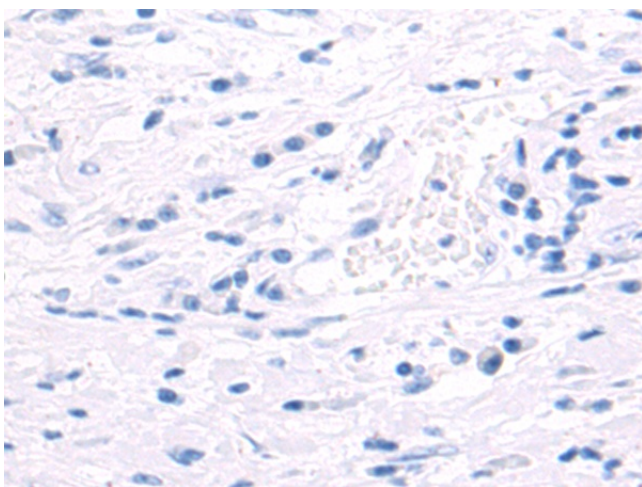
Immunohistochemistry of paraffin-embedded Human tonsil tissue using TA367356 (UPP2 Antibody) at dilution 1/55 (Original magnification: ×200)



Immunohistochemistry of paraffin-embedded Human tonsil tissue using TA367356 (UPP2 Antibody) at dilution 1/55, treated with synthetic peptide. (Original magnification:  $\times 200$ )



Immunohistochemistry of paraffin-embedded Human gastric cancer tissue using TA367356 (UPP2 Antibody) at dilution 1/55 (Original magnification:  $\times 200$ )



Immunohistochemistry of paraffin-embedded Human gastric cancer tissue using TA367356 (UPP2 Antibody) at dilution 1/55, treated with synthetic peptide. (Original magnification:  $\times 200$ )